

The background of the entire page is a photograph of the University of California, Santa Barbara building at night. A large, semi-transparent seal of the university is overlaid on the image. The seal features an open book at the top with the letter 'A' on the left page. Below the book are two hands: the left hand holds a scroll with the Latin phrase 'ET THERIA' (part of 'Et Terrae'), and the right hand holds a scroll with the word 'LUMEN' (part of 'Lumen'). The seal is surrounded by the text 'UNIVERSITY OF CALIFORNIA' at the top and 'SANTA BARBARA' at the bottom. In the foreground, a man in a suit stands at a wooden podium on a small stage, with a woman standing beside him. The building's facade is visible through the semi-transparent seal.

# UC SANTA BARBARA

PARTNERS IN INNOVATION

THE ANNUAL REPORT OF PRIVATE GIVING  
UNIVERSITY OF CALIFORNIA, SANTA BARBARA

FOR THE YEAR ENDING JUNE 30, 2012



THE CAMPUS  
University  
Santa Cruz



## TABLE OF CONTENTS

Broadening Horizons, Ensuring Excellence	3
Financial Highlights	4
Campaign Kickoffs Celebrate History	5
Philanthropy at Work	6
Pushing the Boundaries of Modern Medicine	7
Pioneering Sustainable Energy Solutions	8
Enriching the Student Experience	9
Serving Students by Fostering Faculty	10
Changing the World with Research	11
Growing Foundations, Furthering Knowledge	12
Recognizing Distinction	13
Honor Roll of Donors	18
Officers and Trustees of the UC Santa Barbara Foundation	Inside Back Cover

### ABOUT THE COVER

*Jeff and Judy Henley announce their historic gift during the Campaign for UC Santa Barbara kickoff event in May.*

PHOTO BY MONIE PHOTOGRAPHY

Every effort has been made to provide a complete and accurate listing of donors and gifts of \$1,000 or more received between July 1, 2011 and June 30, 2012. Please accept our apology if a mistake or an omission has occurred.

It is the policy of the University of California, Santa Barbara and the UC Santa Barbara Foundation that a modest portion of gifts and/or the income from gifts may be used to defray the costs of raising and administering funds.

For more information contact:  
John Hammond, Ph.D.  
Senior Director of Donor Relations and Stewardship  
Office of Development  
University of California, Santa Barbara  
Santa Barbara, CA 93106-2013  
(805) 893-3729  
visit: [www.ia.ucsb.edu/campaign](http://www.ia.ucsb.edu/campaign)

Produced by the Office of Public Affairs  
Editor: Shelly Leachman  
Creative Director: Adine Maron

Photography: Peter Allen p. 7; David Bazemore p. 29; courtesy Bren School p. 12 (top); Nick Cosmides p. 12; Grad Images p. 21; Guy Heart p. 5 (bottom); Pradeep Joshi p. 10 (bottom); Kimberly Kavish p. 9, 10; Tony Mastres, p. 2, 6, 8 (bottom), 23, 27, 32; Monie Photography cover, inside front cover, p.1, 3, 5 (bottom); Rod Rolle p. 24; Dobri Simeonov p. 8 (bottom left); John Tseng p. 8 (top left); courtesy UCEAP p. 25; Daniel Viana p. 12 (bottom left); Laurie C. Van De Werfhorst p.11 (right); Elena Zhukova p. 18,19, 20, 22, 26, 28, 31, 32



UC  
SANTA BARBARA

UC  
SANTA BARBARA



# Broadening Horizons, Ensuring Excellence

Dear Friends,

**O**ur momentum is growing — and we have you to thank. Powered by the generosity of our supporters, private giving to the campus has reached unprecedented heights, propelling the Campaign for UC Santa Barbara to nearly three-quarters of our billion-dollar goal. ■ With enthusiasm and a focus on the future, we launched a new phase of our Campaign, which has soared to a cumulative \$745 million in donations to support priority projects, advance ongoing initiatives, and launch new endeavors. Gifts to UC Santa Barbara in the fiscal year that ended



*Chancellor Henry T. Yang and Bruce G. Wilcox*

June 30, 2012, totaled almost \$112 million, a new record for our campus. ■ At a time of diminishing state contributions to our university, private giving makes the critical difference. We are particularly inspired by the way you have been moved to help our students by providing financial assistance, opening new avenues for academic experience, and broadening horizons across the disciplines. ■ Gifts for scholarships and fellowships together grew by 150% in 2011–12, with total donations for student support surpassing \$13 million — almost triple the previous year. Unrestricted gifts, which help create special educational opportunities for students, topped \$2 million. Countless young scholars will also benefit from their participation in the research and projects made possible by your philanthropy. ■ UC Santa Barbara continues to receive increasing recognition for our outstanding teaching, groundbreaking research, and meaningful public service. With these essential building blocks, and your invaluable partnership, we can strengthen our legacy of excellence, opportunity, and innovation — and ensure a bright future for our university and our students.

Warmly,

Bruce G. Wilcox '77  
Chair, UC Santa Barbara Foundation

Henry T. Yang, Chancellor



# Financial Highlights

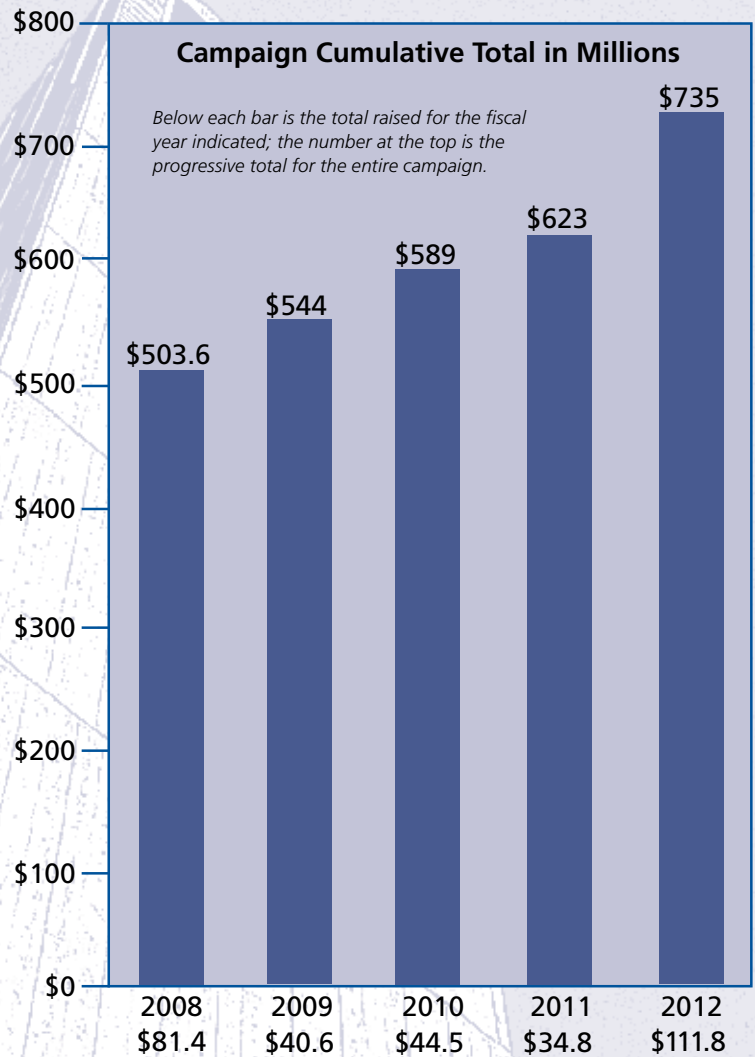
## Private Giving by Year

Year	Total
2007-08	\$81,456,812
2008-09	\$40,629,193
2009-10	\$44,553,830
2010-11	\$34,834,220
2011-12	\$111,797,493

## Private Funds 2011-12

### Sources

Individuals	\$60,887,515
Campus Organizations	\$787,835
Corporations	\$12,575,117
Foundations	\$35,086,119
Other Sources	\$2,460,907
<b>Total</b>	<b>\$111,797,493</b>



## Campus Recipients of Private Funds

Bren School of Environmental Science and Management		\$5,461,149
California NanoSystems Institute		\$1,233,185
College of Creative Studies		\$180,384
Gevirtz Graduate School of Education		\$844,179
College of Engineering		\$62,475,157
College of Letters and Science		\$22,746,194
Art Museum	\$613,887	
Humanities and Fine Arts	\$3,805,197	
Mathematical, Life, and Physical Sciences	\$14,315,151	
Social Sciences	\$3,710,473	
Other Letters and Science Support	\$301,486	
Institute for Collaborative Biotechnologies		\$787,597
Intercollegiate Athletics		\$895,322
Kavli Institute for Theoretical Physics		\$4,899,492
Libraries		\$329,049
Marine Science Institute, the Natural Reserve System, and the National Center for Ecological Analysis and Synthesis		\$2,657,307
Materials Research Laboratory		\$1,280,678
Programs and Services		\$629,344
Academic Affairs	\$63,775	
Academic Programs	\$68,799	
Alumni Affairs	\$240,722	
General Administrative Support	\$256,048	
Student Affairs		\$5,366,007
Arts & Lectures	\$3,483,198	
Financial Aid	\$1,418,814	
Other Student Services and Organizations	\$463,995	
Unrestricted		\$2,012,449*
<b>Total</b>		<b>\$111,797,493</b>

\*Includes gifts, pledges, and private grants received by the UC Santa Barbara Foundation and the UC Regents.

# Campaign Kickoffs Celebrate History

The Campaign for UC Santa Barbara is as vital and invigorated today as it was when it first began — and perhaps more so. As our number of donors steadily grows, with the amount of large gifts to campus on an upswing, we are increasingly inspired and motivated to work harder.



With total contributions exceeding \$111 million, this has been our best fund-raising year yet. In the midst of it all, we kicked off a new phase of our campaign in May, ushering in what promises to be an era of landmark giving. A spectacular event on campus culminated with Jeff and Judy Henley's announcement of their historic \$50-million pledge. Receptions in Los Angeles, Orange County, San Diego, the San Francisco Bay Area, and New York extended the festivities. An upcoming event in Washington D.C. will see the celebration continue. Encouraged by the vision and generosity of our benefactors — and driven by our mutual commitment to see that UC Santa Barbara flourishes now, and in the future — we're on a final push toward our \$1-billion goal. At \$745 million and counting, we're almost there.

Private giving makes a major difference to students, especially in their ability to access a premier university like ours and their opportunities to succeed here. The tremendous fund-raising we've seen this year reflects an appreciation of this, and represents a renewed and deeper investment from you — our alumni, parents, and friends. We are truly grateful for your support.



*Chancellor Henry T. Yang gives remarks at the May campaign kickoff event on campus, while Jeff and Judy Henley '66/H'09 look on.*



*Good Morning America's Josh Elliott '93, a UCSB alumnus, honorary campaign chair Michael Douglas '68, Dilling and Chancellor Henry T. Yang, campaign co-chair Lady Leslie Ridley Tree H'12, and trustee John Arnhold '75, at the New York campaign kickoff party.*





## Philanthropy at Work

UC Santa Barbara is proud to recognize all of the alumni, parents, and friends, as well as corporations, foundations, and organizations, who made generous contributions to The Campaign for UC Santa Barbara in the year ending June 30, 2012. Your philanthropic gifts are fostering academic innovation, enhancing teaching and advancing research, strengthening existing areas of excellence, and building new ones.

We hope you enjoy reading the features that follow. They represent just a few examples of the amazing ways that UC Santa Barbara's benefactors are helping us to grow academic distinction and create opportunities for learning and discovery. To each of our supporters, especially those listed in the Honor Roll of Donors beginning on page 18, UCSB offers sincere gratitude and profound appreciation.



# Pushing the Boundaries of Modern Medicine

Countless visually impaired and blind people could one day be aided by UCSB-born innovations in stem cell therapies for ocular disease.

Philanthropist and venture capitalist Bill Bowes — founder of biotechnology giant Amgen — gave the campus \$5 million to fund a new endeavor aimed at treating age-related macular degeneration and diabetic retinopathy, two leading causes of sight loss.

The Garland Initiative for Vision — named for Bowes' mother, who was a physician and Santa Barbaran — is a targeted, five-year project of elite researchers, postdocs, and students at the Center for Stem Cell Biology and Engineering. Center directors and renowned scientists Dennis Clegg, Peter Coffey, H. Tom Soh, and James Thomson, are working to develop cellular treatments for both conditions, hoping to advance them out of the lab and into clinical trials within five years.

Bowes' donation also marks the high-profile lead gift for EMBODI, a fledgling campus effort to spread the word about medical advancements being made here, and their potential impact on human health. Bearing the slogan "This is the new medicine,"



*This artistic depiction shows early nerve cell differentiation in a multiplying stem cell. Work being done at UC Santa Barbara with stem cells offers great hope for ocular disease and many other cell dysfunctional disease types.*

EMBODI (Engineering, Medicine, Biology, Discovery, Innovation) brings together medically inspired campus institutes and activities under a common vision to espouse what UCSB is doing at the interface of medicine and science and engineering research.

"UCSB's achievements thus far

in bioengineering have come from leveraging our strengths in engineering and science, and working across disciplines to find solutions to important medical challenges," said Rod Alferness, the Richard Auhll Professor and Dean of Engineering. "This gift from Bill Bowes is an investment in our progress to confront the most critical medical issues affecting society."

# Pioneering Sustainable Energy Solutions

Paving the way for transformative changes to the campus and innovations impacting the world, alumnus Jeff Henley ('66) and

his wife Judy (H '09), an honorary alum, committed \$50 million to UCSB's Institute for Energy Efficiency (IEE) and College of Engineering.

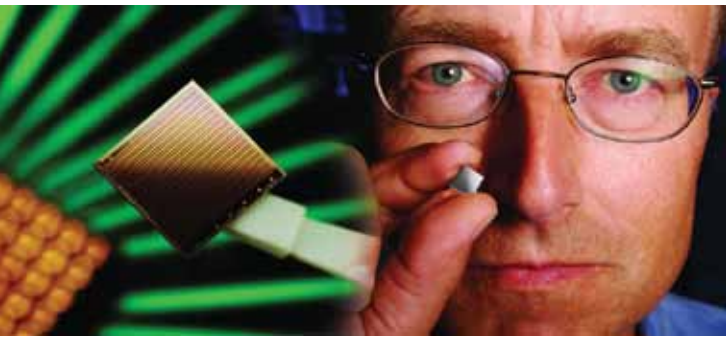
The Henleys' gift — the largest in campus history — will help to build a new

home for the sustainability-centered IEE, where researchers today are harnessing nanomaterials to create high-capacity storage batteries and high-efficiency fuel cells, and constructing "energy harvesters" that will see waste heat repurposed as electricity. They are designing hybrid silicon and optical

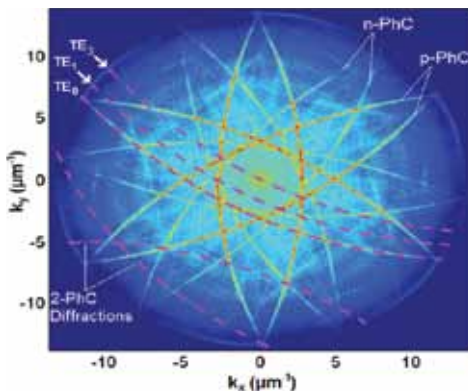
technologies for use in communications devices that will work faster and run cooler.

Henley Hall, as the planned building is to be named, will see the world's brightest minds in materials, computing, optoelectronics, control systems, photovoltaics, and solid state lighting collaborate to innovate and advance the discoveries that will one day reduce, even reverse, the global growth in energy consumption.

Of the Henleys' total pledge, \$30 million will go toward Henley Hall and be invested in faculty recruitment for IEE and engineering. The additional \$20 million, in the form of an estate commitment, will support the College of Engineering. The Henleys' investment will benefit students by creating new opportunities for research and discovery, helping to prepare a new generation of scientists and engineers.



*John E. Bowers is Director of the Institute for Energy Efficiency and a professor in the Department of Electrical and Computer Engineering.*



*This image depicts angular luminescence from an LED, with a photonic crystal inside to assist with evaluating the directionality of the light.*



*Doctoral student Srabanti Chowdhury uses an electron-beam evaporator for metal deposition while performing semiconductor research with electrical and computer engineering professor Umesh Mishra.*





*The Arnhold Undergraduate Research Fellows Program is designed to aid and encourage English majors who want to conduct research beyond the level of ordinary course assignments. From left to right, the 2012 Fellows: Laryssa Galvez, Ariel Pacific, Chelsea Maccani, Dana Solomon (Arnhold Graduate Fellow), Carly Bonilla-Flores, and Jessica Sherwyn.*

## Enriching the Student Experience

Academic opportunities for undergraduate students in the Department of English are being expanded significantly, thanks to a \$1.75-million gift from John Arnhold ('75) and his wife, Jody.

The Arnhold Endowment for Excellence in English is designed to fund courses, projects, and programs that support the undergraduate research experience, graduate student training, postdoctoral teaching fellows, and curricular advancements. Such

creatively structured programmatic endowments demonstrate the sweeping ways in which a gift can impact entire departments.

Regular contributors to the English department since 2005, the Arnholds have funded a suite of programs that directly impacts hundreds of undergrads and enhances the quality of the intellectual community for students and faculty alike. Their new gift will help spark new endeavors, such as a series of small seminars and collaborative

project classes, advanced instructional technologies, and special research funds for undergraduates.

High-achieving, budding young researchers in science are also being afforded new opportunities, courtesy of a \$500,000 pledge from Pat and Joe Yzurdiaga. The Pat and Joe Yzurdiaga Graduate Student Fellowship Fund will support exceptional grad students in physics, biochemistry, chemistry, and molecular and cellular biology.



*David Marshall, a prize-winning scholar in the field of 18th century literature and aesthetics, is the campus's inaugural Michael Douglas Dean of Humanities and Fine Arts. He is also the senior Humanities Dean in the University of California system.*

## Serving Students by Fostering Faculty

Endowed chairs are essential building blocks for academic departments, enabling them to attract prominent faculty and enhance their reputations — which in turn attracts top students.

Aiming to support outstanding instruction, faculty research, and program initiatives in the humanities and fine arts, Academy Award-winning actor and producer and alumnus Michael Douglas ('68) contributed \$500,000 to establish an endowed dean's chair in the discipline.

The Michael Douglas Deanship of Humanities and Fine Arts "will be especially meaningful for our students, faculty, and alumni, since Douglas's professional career has been

characterized by such intelligence and social engagement, as well as artistic distinction," said inaugural chair holder David Marshall, former executive dean of the College of Letters and Science.

Professor Emeritus Walter J. Mead and his wife, Thelma, had a similar goal — to bolster the campus's commitment to growing its academic core — with their \$1-million deferred gift to establish an endowed chair in economics.

Retaining the very best students and faculty is paramount to Pat and Joe Yzurdiaga, who gave \$1 million to establish an eponymous chair in nanoscience, in the Division of Mathematical, Life, and Physical Sciences.



# Changing the World with Research

Graduate students may temporarily turn professors, while faculty take up the role of students, in a unique, new interdisciplinary initiative of the Kavli Institute of Theoretical Physics.

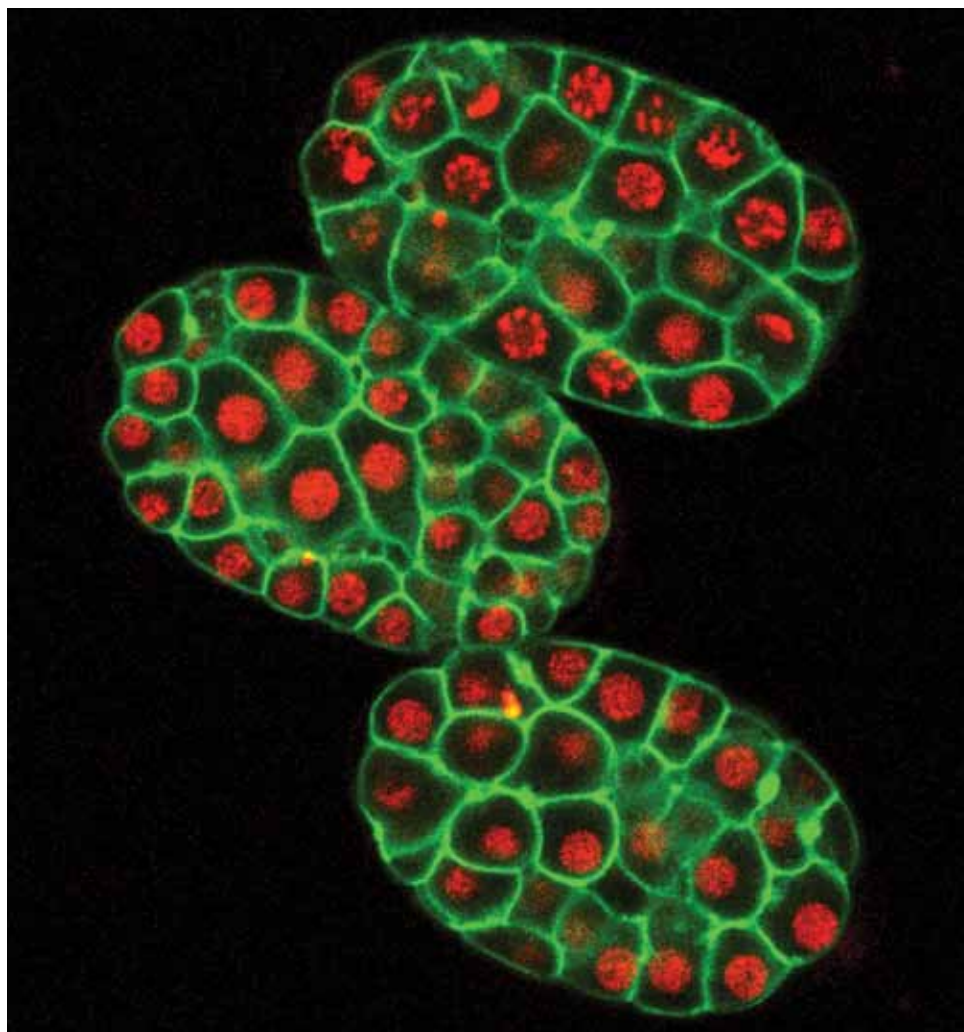
Funded in part by a \$1.6-million award from the Gordon and Betty Moore Foundation, plus a \$400,000 grant from the Burroughs Wellcome Fund, the Santa Barbara Advanced School for Quantitative Biology will

explore the interface of physics and biology.

The intensive summer course for elite graduate students, postdocs, and faculty from around the world is a scientific mash-up meant to spark new ideas. It will put participants side-by-side in lectures and in the lab, exploring subjects such as morphogenesis, embryology,



*Environmental microbiology professor Patricia Holden is studying threats to our urban water environment, hoping to develop successful methods for contamination abatement.*



*The model animal *C. elegans*, shown here as early-stage, living embryos, will serve as research tools in the Santa Barbara Advanced School of Quantitative Biology.*

microbial biology, and evolution.

Students, researchers and faculty are also partnering on a new effort of the Bren School, led by professor Patricia Holden. Using Santa Barbara itself as a living lab, the team's research and training program on urban water quality has potential implications for public and environmental health on a broader scale.

A \$1.25-million gift from water industry executive Henry H. Wheeler, Jr., launched the project, "Urban Water Environment." The dual-thrust endeavor looks to identify and quantify threats to surface waters and groundwater in urban environments — and determine how to mitigate them. The ultimate goal is to inform future groundwater protection techniques.

# Growing Foundations, Furthering Knowledge



*The Walton Family Foundation has given more than \$3 million to Bren School's Latin American Fishery Fellows Program, preparing graduate students for careers in fishery reform.*



*Latin America holds tremendous promise for prosperous fisheries that align community well-being, economic vitality and environmental conservation.*

The Latin American Fishery Fellows Program at Bren School of Environmental Science & Management aims to train a new generation of marine-resource managers and conservation leaders to develop and implement innovative solutions to ocean-management challenges throughout the region. The inaugural cohort of five students is expected to graduate in 2013 and begin careers in fishery reform.

The Walton Family Foundation has gifted Bren School \$1.42 million for a third and fourth cohort of Latin American Fishery Fellows, after contributing \$1 million to launch the program in 2011, and \$725,000 to support a second cohort.

The program provides complete tuition and expenses for a two-year

Master of Environmental Science and Management degree, with a concentration in Coastal Marine Resources Management.

Foundation support has also been a boon to the campus-based Center for Evolutionary Psychology co-directed by Leda Cosmides and John Tooby. A \$2.6-million award from The John Templeton Foundation will further new research by the pair, whose evolutionary approach to cognition culture is viewed as one of the most important new perspectives in the cognitive sciences in the past 50 years.

Professors of psychology and anthropology, respectively, Cosmides and Tooby are part of UCSB's vast community of researchers — among the world's largest and most active — in evolutionary psychology and allied disciplines. Their work and efforts to understand the evolution of human nature are widely held to both lead and underpin the field.



*Leda Cosmides and John Tooby, the founders of the field known as evolutionary psychology, integrate knowledge from diverse disciplines to explore the evolution of the human mind.*



# Recognizing Distinction

Private gifts are increasingly important in maintaining the quality of UC Santa Barbara's mission of teaching, research, and public service. Among the principal forms of private support are endowed chairs, which support the educational and research activities of distinguished members of the faculty.

The following generous benefactors have made permanent investments in UC Santa Barbara's future by establishing endowed chairs.

## CAMPUSWIDE

### Edward A. Dickson Emeriti Professorship

University of California Presidential Chair  
Edward A. Dickson, Donor  
*Alice Condodina, Dickson Emeriti Professor*  
*Steven Fisher, Dickson Emeriti Professor*

### MacArthur Foundation I

MacArthur Foundation, Donor  
*Nelson Lichtenstein, MacArthur Professor*

### MacArthur Foundation II

MacArthur Foundation, Donor  
*Richard Appelbaum, MacArthur Professor*

### Duncan and Suzanne Mellichamp

#### Academic Initiative Professorships, Cluster I (4)

Campuswide (Systems Biology Initiative,  
College of Engineering 2003-2018)  
Duncan and Suzanne Mellichamp H '09/MA  
'70, Donors

*Cheryl Briggs, Mellichamp Professor of  
Systems Biology*

*Jamey Marth, Mellichamp Professor of  
Systems Biology*

*Otger Campas, Mellichamp Professor of  
Systems Biology*

### Duncan and Suzanne Mellichamp

#### Academic Initiative Professorships, Cluster II (4)

Campuswide (Globalization Initiative,  
College of Letters and Science 2008-2023)  
Duncan and Suzanne Mellichamp H '09/MA  
'70, Donors

*Janet Afary, Mellichamp Professor of Global  
Religion and Modernisms*

*Michael Curtin, Mellichamp Professor of  
Global and Media Representations*

*Jan Nederveen Pieterse, Mellichamp  
Professor of Transnational Civil Society  
Networks*

*Alison Brysk, Mellichamp Professor of Global  
and International Studies*

### University of California Presidential Chair I

### University of California Presidential Chair II

Interdisciplinary Sciences  
*Alan J. Heeger, Presidential Professor*  
*2000 Nobel Prize in Chemistry*

### University of California Presidential Chair III

Department of Physics  
*Michael Witherell, Presidential Professor*

## COLLEGE OF ENGINEERING

### Eugene Aas Chair in Computer Science

Computer Science Department  
Mark and Susan Bertelsen '66/'67, Donors

### ALCOA Chair in Materials

Materials Department  
The Aluminum Company of America, Donor  
*Tresa Pollock, ALCOA Professor of Materials*

### Richard A. Auhll Professorship and Dean's Chair in Engineering

College of Engineering  
Richard A. Auhll, Donor  
*Rod Alferness, Auhll Professor and Dean,*  
*College of Engineering*

### Cree Chair in Solid State Lighting and Display

Materials Department  
Cree Inc., F. Neal Hunter, Umesh and Susan  
Mishra, and Steven P. DenBaars, Donors  
*Shuji Nakamura, Cree Professor of Solid  
State Lighting and Display*

### Glen and Susanne Culler Chair in Computer Science

Computer Science Department  
Zhu Family Foundation and Anonymous,  
Donors

### Doluca Family Chair in Electrical and Computer Engineering

Electrical and Computer Engineering  
Department  
Tunç and F. Lale Doluca '81, Donors  
*Mark Rodwell, Doluca Professor of Electrical  
and Computer Engineering*

### Fred Kavli Chair in Nanotechnology

College of Engineering  
Fred Kavli H '05, Donor  
*John Bowers, Kavli Professor of  
Nanotechnology*

### Fred Kavli Chair in Optoelectronics and Sensors

College of Engineering  
Fred Kavli H '05, Donor  
*Larry Coldren, Kavli Professor of  
Optoelectronics and Sensors*

### Edward Noble Kramer Chair in Materials Science

College of Engineering  
Edward J. and Gail W. Kramer, Donors

### Leadership Chair in Computer Science

College of Engineering  
Anonymous, Donor  
*Richard Kemmerer, Leadership Professor of  
Computer Science*

### Duncan and Suzanne Mellichamp Chair in Process Control

Chemical Engineering Department  
Duncan and Suzanne Mellichamp H '09/MA  
'70, Donors  
*Francis J. Doyle III, Mellichamp Professor of  
Process Control*

### Mitsubishi Chemical Corporation Chair in Functional Materials

College of Engineering  
Mitsubishi Chemical Corporation, Donor  
*Glenn Fredrickson, Mitsubishi Professor of  
Functional Materials*

### Mitsubishi Chemical Corporation Chair in Solid State Lighting and Display

College of Engineering  
Mitsubishi Chemical Corporation, Donor  
*Steven P. DenBaars, Mitsubishi Professor of  
Solid State Lighting and Display*

### Venkatesh Narayanamurti Chair in Computer Science

Computer Science Department  
Karl Lopker and Pamela Meyer Lopker  
'73/'77, Donors  
*Xifeng Yan, Narayanamurti Professor of  
Computer Science*

### Warren and Katharine Schlinger Distinguished Professorship in Chemical Engineering

Chemical Engineering Department  
Warren and Katharine Schlinger, Donors  
*L. Gary Leal, Schlinger Professor of Chemical  
Engineering*

### Seoul Optodevice Chair in Solid State Lighting

College of Engineering  
Seoul Optodevice Co., Ltd, Donor  
*James Speck, Seoul Optodevice Professor of  
Solid State Lighting*

### Donald W. Whittier Chair in Electrical Engineering

Electrical and Computer Engineering  
Department  
The Mericos Foundation, Donor  
*Herbert Kroemer, Whittier Professor of  
Electrical Engineering*  
*2000 Nobel Prize in Physics*

### Fred and Linda R. Wudl Chair in Materials Science

Materials Department  
Fred and Linda R. Wudl, Donors

## COLLEGE OF LETTERS AND SCIENCE

### **Guenter and June Ahlers Chair in Experimental Physics**

Mathematical, Life, and Physical Sciences  
Guenter and June Ahlers, Donors

### **King Abdul Aziz Ibn Saud Chair in Islamic Studies**

History Department  
The Saudi Royal Family, Donor  
*Adam Sabra, King Abdul Aziz Ibn Saud Professor of Islamic Studies*

### **Alec P. Alexander Chair in Economics**

Economics Department  
Walter and Thelma Mead, Donors

### **James and Sarah Argyropoulos Chair in Hellenic Studies**

College of Letters and Science  
James and Sarah Argyropoulos, Donors

### **José Miguel de Barandiarán Chair in Basque Studies**

Spanish and Portuguese Department  
Ministry of Culture of the Autonomous Basque Government in Spain and the Federation of Basque-Navarrese Savings and Loan, Donors  
*Viola Miglio, Barandiarán Professor*

### **Leonard Broom Chair in Demography**

College of Letters and Science  
Social Sciences Division  
Leonard\* and Gretchan Broom, Donors  
*Shelley Lundberg, Broom Professor*

### **John Carbon Chair in Biochemistry and Molecular Biology**

Molecular, Cellular, and Developmental Biology Department  
Amgen Foundation, William K. Bowes, Jr. Foundation, Franklin and Catherine Johnson Foundation, and the Rathmann Family Foundation, Donors  
*Jamey Marth, Carbon Professor of Biochemistry and Molecular Biology*

### **Virgil Cordano, OFM, Chair in Catholic Studies**

Religious Studies Department  
Charles Schwab, Charles\* and Harriet Burke, Richard and Marguerite Berti, and the Franciscan Friars, Donors  
*Ann Taves, Cordano Professor of Catholic Studies*

### **Dorothy and Sherrill C. Corwin Chair in Music Composition**

Music Department  
The Dorothy and Sherrill C. Corwin Foundation, Donor  
*Clarence Barlow, Corwin Professor of Music Composition*

### **The XIVth Dalai Lama Chair in Tibetan Buddhism and Cultural Studies**

Religious Studies Department  
Individuals, Foundations, and Corporations, Donors  
*José Ignacio Cabezón, XIVth Dalai Lama Professor of Tibetan Buddhism and Cultural Studies*

### **Jack and Laura Dangermond Chair in Geography**

Mathematical, Life, and Physical Sciences  
Jack and Laura Dangermond, Donors

### **Dehlsen Chair in Environmental Studies**

Environmental Studies Program  
James G.P. and Deanna C. Dehlsen, Donors

### **Michael Douglas Dean of Humanities and Fine Arts Chair**

Michael Douglas, Donor  
*David Marshall, Michael Douglas Dean of Humanities and Fine Arts*

### **Robert and Patricia Duggan Chair in Organic Chemistry**

Chemistry and Biochemistry Department  
Mr. and Mrs. Robert W. Duggan, Donors

### **Ruth Garland Chair for the Director of the Center for Stem Cell Biology and Engineering**

Mathematical, Life, and Physical Sciences  
William K. Bowes, Jr. Foundation, Donor  
*Jamie Thomson and Thomas Soh, Garland Professors and Co-Directors of the Center for Stem Cell Biology and Engineering*

### **Marsha and Jay Glazer Chair in Jewish Studies**

Humanities and Fine Arts  
Marsha and Jay Glazer Foundation, Donor

### **Alan J. Heeger Chair in Interdisciplinary Science**

Mathematical, Life, and Physical Sciences  
Ruth and Alan J. Heeger, Donors  
*Craig Hawker, Heeger Professor in Interdisciplinary Science*

### **Alan J. Heeger Chair in Interdisciplinary Science**

Mathematical, Life, and Physical Sciences  
Alan J. Heeger, Donor

### **Jeff Henley Chair in Economics**

Economics Department  
Jeff and Judy Henley '66/H '09, Donors  
*Finn E. Kydland, Henley Professor of Economics*  
*2004 Nobel Prize in Economics*

### **Lai Ho and Wu Cho-liu Chair in Taiwan Studies**

East Asian Languages and Cultural Studies Department  
Individuals and the Taiwanese American Foundation of San Diego, Donors  
*Kuo-Ch'ing Tu, Lai Ho, and Wu Cho-liu Professor of Taiwan Studies*

### **Hull Chair in Women's Studies**

Department of Feminist Studies  
M. Blair Hull '65, Donor  
*Eileen Boris, Hull Professor of Women's Studies*

### **Kundan Kaur Kapany Chair in Sikh Studies**

Global and International Studies Program  
Dr. and Mrs. Narinder S. Kapany, Donors  
*Gurinder S. Mann, Kapany Professor of Sikh Studies*

### **E. Khashoggi Industries, LLC Chair in Letters and Science**

College of Letters and Science  
Essam and Layla Khashoggi, Donors  
*Galen D. Stucky, Khashoggi Professor*

### **Louis G. Lancaster Chair in International Relations**

Political Science Department  
Winifred H. Lancaster\* H '89, Donor  
*J. Benjamin Cohen, Lancaster Professor of International Relations*

### **Luis Leal Chair in Chicana and Chicano Studies**

Chicana and Chicano Studies Department  
Individuals, Foundations, Corporations, and the Mexican Government, Donors  
*Aida Hurtado, Leal Professor of Chicana and Chicano Studies*

### **Walter J. Mead Chair in Economics**

Economics Department  
Walter and Thelma Mead, Donors

### **Maxwell C. and Mary Pellish Chair in Economics**

Economics Department  
Colonel Maxwell C. Pellish\* and Mrs. Mary Pellish, Donors  
For Distinguished Visiting Professors

### **Aaron and Cherie Raznick Chair in Economics**

College of Letters and Science  
Aaron\* and Cherie Raznick H '88, Donors  
*Theodore C. Bergstrom, Raznick Professor of Economics*

### **J. F. Rowny Chair in Comparative Religions**

Religious Studies Department  
The Rowny Foundation, Donor  
*David White, Rowny Professor of Comparative Religions*

### **J. F. Rowny Chair in Religion and Society**

Religious Studies Department  
The Rowny Foundation, Donor  
*Wade Clark Roof, Rowny Professor of Religion and Society*

### **Arthur N. Rupe Chair in the Social Effects of Mass Communication**

Communication Department  
Arthur N. Rupe Foundation, Donor  
*Ronald E. Rice, Rupe Professor of the Social Effects of Mass Communication*



**Sara Miller McCune SAGE Dean of Social Sciences**

Social Sciences Division  
SAGE Publications, Inc., Donor  
*Melvin L. Oliver, Sara Miller McCune SAGE Dean of Social Science*

**Arent and Jean Schuyler Chair in Environmental Studies**

Environmental Studies Program  
Jean K. and Arent H. Schuyler, Jr.\*'61, Donors  
*Carla D'Antonio Schuyler Professor of Environmental Studies*

**International Shinto Foundation Chair in Shinto Studies**

East Asian Languages and Cultural Studies Department  
International Shinto Foundation, Donor  
*Fabio Rambelli, Shinto Foundation Professor*

**Charles A. Storke II Chair in Ecology, Evolution, and Marine Biology**

Ecology, Evolution, and Marine Biology Department  
Charles A. Storke II,\* Donor

**Charles A. Storke II Chair in Molecular, Cellular, and Developmental Biology**

Molecular, Cellular, and Developmental Biology Department  
Charles A. Storke II,\* Donor  
*Charles E. Samuel, Storke Professor of Molecular, Cellular, and Developmental Biology*

**Koichi Takashima Chair in Japanese Cultural Studies**

East Asian Languages and Cultural Studies Department  
Kyoei Steel Ltd., of Japan; Koichi Takashima, President and CEO, Donors  
*John Nathan, Takashima Professor of Japanese Cultural Studies*

**Anton Vonk Chair in International Security**

Political Science Department  
Anton Vonk, M.A. '05 and Diane Boss, Donors

**Wilcox Family Chair in Biotechnology**

Mathematical, Life, and Physical Sciences  
Drs. Susan and Gary Wilcox '70, '74/'69, '72, Donors  
*Joel Rothman, Wilcox Professor*

**Richard Whited Chair in Interdisciplinary Science**

Mathematical, Life, and Physical Sciences  
Richard C. Whited, Donor  
*David Weld, Whited Professor of Interdisciplinary Science*

**Worster Chair in Experimental Physics**

Physics Department  
Bruce Worster, Ph.D. '71 and Susan Worster '70, Donors  
*John Martinis, Worster Professor of Experimental Physics*

**Susan and Bruce Worster Chair for the Dean of Science**

Mathematical, Life, and Physical Sciences  
Bruce Worster, Ph.D. '71 and Susan Worster '70, Donors  
*Pierre Wiltzius, Worster Professor, Dean of Science*

**Pat and Joe Yzurdiaga Chair in Nanoscience**

Mathematical, Life, and Physical Science  
Pat and Joe Yzurdiaga, Donors

**BREN SCHOOL OF ENVIRONMENTAL SCIENCE AND MANAGEMENT**

**Donald Bren Dean's Chair in Environmental Science and Management**

Bren School of Environmental Science and Management  
The Donald Bren Foundation, Donor  
*Steven Gaines, Bren Professor and Dean, Bren School of Environmental Science and Management*

**Donald Bren Distinguished Professorship in Corporate Environmental Management**

Bren School of Environmental Science and Management  
The Donald Bren Foundation, Donor  
*Gary Libecap, Bren Professor of Corporate Environmental Management*

**Donald Bren Distinguished Professorship in Environmental Law and Policy**

Bren School of Environmental Science and Management  
The Donald Bren Foundation, Donor

**Donald Bren Distinguished Professorship in Interdisciplinary Environmental Science and Management**

Bren School of Environmental Science and Management  
The Donald Bren Foundation, Donor

**INTERDISCIPLINARY**

**Veeco Chair in Engineering and the Sciences**

College of Engineering and Mathematical, Life, and Physical Sciences  
Veeco Instruments, Inc., Donor  
*Ania Bleszynski-Jayich, Veeco Professor of Engineering and the Sciences*

**RESEARCH INSTITUTES**

**Peter J. Clarke Chair for the Director of the California NanoSystems Institute**

California NanoSystems Institute  
Sputtered Films, Inc., a subsidiary of Tegal Corporation, Donor  
*David Awschalom, Clarke Professor and Acting Director of the California NanoSystems Institute*

**Frederick W. Gluck Chair in Theoretical Physics**

Kavli Institute for Theoretical Physics  
Frederick W. Gluck, Donor  
*Lars Bildsten, Gluck Professor of Theoretical Physics and Director, Kavli Institute for Theoretical Physics*

**Susan F. Gurley Chair in Theoretical Physics and Biology**

Kavli Institute for Theoretical Physics  
John A. and Meg Gurley, '78, M.S. '83, Donors  
*Boris Shraiman, Gurley Professor of Theoretical Physics and Biology*

**Eleanor L. and Thomas J. Harriman Chair in Neuroscience Research**

Neuroscience Research Institute  
Eleanor L. Harriman\* and Thomas J. Harriman, Donors  
*Kenneth Kosik, Harriman Professor of Neuroscience Research*

**Wayne Rosing, Simon and Diana Raab Chair in Theoretical Astrophysics**

Kavli Institute for Theoretical Physics  
Wayne Rosing, the TABASGO Foundation, and Simon and Diana Raab, Donors

**Preparing the Next Generation of Scholars**

*The support of endowed fellowships enables UC Santa Barbara to sustain and enhance the tradition of excellence in innovative research and teaching. Fellowship support is an investment in the next generation of scholars, whose work will define the future frontiers of knowledge.*

*The university gratefully acknowledges alumni, trustees of the UC Santa Barbara Foundation, parents, faculty, friends, and organizations that have established endowed graduate fellowships with gifts of \$100,000 or more.*

**Gunter and June Ahlers Fellowship in Physics**

Dr. and Mrs. Gunter Ahlers, Donors

**Janet A. Alpert Fellowship in Economics**

Janet A. Alpert '68, Donor

**Mortimer Andron Fellowships in Economics**

Dr. and Mrs. Mortimer Andron, Donors

**Bluma Appel Jewish Studies Fund**

Bluma Appel,\* Donor

\*Deceased

**Arnhold Endowment for Excellence in English**

Jody and John Arnhold /'75, Donors

**Barpal Family Fellowship in the College of Engineering**

Isaac and Margaret Barpal '68, '70, Donors

**Jean Belin Fellowship in French and Italian**

Robert H. Sommer,\* Naomi Sommer,\* and Tana Sommer-Belin, Donors

**Fritz E. Bischoff Fund for Psychology**

Estate of Fritz E. Bischoff,\* Donor

**Bonderson Fellowships in Biomedical Engineering and Materials Engineering**

Paul R. Bonderson, Jr. and Sandra K. Bonderson, Donors

**Broida-Hirschfelder Graduate Fellowship in the Sciences**

Elizabeth S. Hirschfelder,\* the Faculty Women's Club, and other Individuals, Donors

**Catherine Bruce Fellowship for Financial Aid**

Catherine Bruce\* Estate, Donor

**Carbon-Clarke Graduate Fellowship in Biochemistry and Molecular Biology**

Anonymous, Donor

**Chancellor's Graduate Fellowship**

Anonymous, Donor

**Steve and Sue Cooper Graduate Fellowship**

Mr. and Mrs. Stephen E. Cooper '68, Donors

**CSP Technologies Fellowship**

Anonymous, Donor

**Brython Davis Graduate Fellowship**

Brython P. Davis, Donor

**Deckers Outdoor Corporation Fellowship for the Bren School**

Anonymous, Donor

**Charles Den Bell Student Loan Fund**

Estate of Charles Den Bell,\* Donor

**Jean Devlin Initiative Fund**

Richard Auhll, Roy and Janet Hardiman '83, Perri Heinz-Harcourt '71, and other Individuals, Foundations and Corporations, Donors

**Robert H. DeWolfe Teaching Fellowship in Organic Chemistry**

Barbara B. DeWolfe,\* Donor

**Erna V. Fisher Trust Fellowship for Czech Music**

Erna V. Fisher\* Trust, Donor

**French and Italian Fellowship Fund**

Anonymous, Donor

**Peter R. Fricker Fellowship for Post-Doctoral Studies in Music Composition**

A. Helen and Peter Fricker,\* Donors

**Bernice and Karl Geiringer Music Fellowship**

Ms. Bernice Geiringer\* H '01, Donor

**Pat and Irving Glazer Graduate Fellowship in Jewish Studies**

Pat and Irving Glazer, Donors

**William Randolph Hearst Fund**

The William Randolph Hearst Foundation, Donor

**Ardis O. Higgins Graduate Fellowship in Ethnomusicology**

Ardis O. Higgins,\* Donor

**Ardis O. Higgins Graduate Fellowship in Scandinavian Music**

Ardis O. Higgins,\* Donor

**Otto J. Holmok Cancer Research Fellowship Fund**

Otto J. Holmok, Donor

**Islamic Studies Fellowship**

H.R.H. Prince Mohammed bin Fahd bin Abdulaziz and the Saudi Royal Family, Donors

**Dr. J Student Teacher Fellowship in Education**

Individuals honoring Dr. Richard Jamgochian, Donors

**Japan Bamboo Association Fellowship in Religious Studies**

Japan Bamboo Association, Donor

**Louis Lancaster Graduate Fellowship in Political Science**

Mr. and Mrs. Louis Lancaster\* H '89, Donors

**Israel Levitan Memorial Fellowship in Art Studio**

Mrs. Idee Levitan-Maxted,\* Donor

**Margaret P. Mallory Fellowship in Art History**

Miss Margaret Mallory,\* Donor

**Margaret P. Mallory Fellowship in Music**

Miss Margaret Mallory,\* Donor

**The William C. and Florence W. Mathews Fund**

Estate of Florence W. Mathews, Donor

**Sara Miller McCune Fellowship in Communication Studies**

Sara Miller McCune, Donor

**MC-CAM Fellowships and Administration Fund**

Mitsubishi Chemical Corporation, Donor

**Mendell Graduate Fellowship in Cultural Literacy**

Mr. and Mrs. Steven C. Mendell '63, Donors

**Anthony and Marion Menk Music Affiliates Graduate Fellowship**

Mr. and Mrs. Anthony Menk,\* Donors

**Mitsubishi Chemical Fellowship in Chemical Engineering**

Mitsubishi Chemical Corporation, Donor

**Mitsubishi Chemical Fellowship in Materials**

Mitsubishi Chemical Corporation, Donor

**Kenneth Pai Graduate Fellowship in Chinese Studies**

Bruce G. Wilcox '77, Donor

**Rathmann Graduate Fellowship in Mathematical, Life, and Physical Sciences**

William and Ute Bowes, Catherine and Franklin Johnson, Jr., and other Individuals, Foundations and Corporations, Donors

**Bruce Rickborn and Ross Johnson Graduate Fellowship**

M. Ross and Charlotte Johnson '70, Donors

**Warren and Katharine Schlinger Graduate Fellowship in Chemical Engineering**

Warren and Katharine Schlinger Foundation, Donor

**Harold and Hester Schoen Fellowship Fund**

Harold and Hester Schoen, Donors

**Philip and Ada Siff Foundation Dean's Scholar Fund in Education**

Siff Foundation, Donor

**Emil Steck, Jr. Graduate Division Fellowship**

Fredric E. Steck '67 and the Steck Family Foundation, Donors

**Charles A. Storke II Fellowships in Biology**

Charles A. Storke II,\* Donor

**Technology Management Graduate Program**

Jeff and Judy Henley '66/H '09, Donors

**Thormahlen Family Fellowship in Economics**

William J. Thormahlen Family, Donors

**John Tokuyama Memorial Fellowship**

Mrs. Alice Tokuyama and Dr. Samuel Tokuyama /'69, Donors

**Louis H. Towbes Graduate Fellowship**

Mr. Michael and Mrs. Gail\* Towbes

**Toshiko Ushiyama Memorial Fund**

Tominori Yamada, Donor

**UCSB History Associates Donald Van Gelderen Memorial Fund**

Jo Beth Van Gelderen, Donor



**Walsin Lihwa Electronics and Photonics Research Center Fellowship**  
Walsin Lihwa Corporation, Donor

**Pat and Joe Yzurdiaga Graduate Student Fellowship Fund**  
Pat and Joe Yzurdiaga, Donors

**Zytowski Fellowship in Music**  
Carl B. Zytowski, Donor

## Supporting Students

*UC Santa Barbara gratefully acknowledges alumni, trustees of the UC Santa Barbara Foundation, parents, faculty, friends, and organizations that have established endowed scholarships with gifts of \$50,000 or more.*

**Professor Larry Adams Scholarship Award**  
Marilyn Lee and Harvey Schneider '69, Donors

**Jeanie Anderson Memorial Award in the Education Abroad Program**  
Dr. Harry Anderson, Donor

**Barker Scholarship Endowment Fund for Environmental Studies**  
Coeta Barker\* and the Donald R. Barker Foundation, Donors

**Margaret H. Blaney Scholarship Fund**  
Estate of Margaret H Blaney,\* Donor

**Burnham Engineering and Applied Sciences Scholarship**  
Dan and Meg Burnham, Donors

**William M. Bushnell Scholarship Geology**  
Karen Bushnell, Donor

**John and Ina Campbell Scholarship Fund**  
Ina Theresa Campbell,\* Donor

**Paul Chatom Jr. Scholarship Fund**  
Estate of Paul Chatom, Jr.,\* Donor

**Dr. Vernon I. Cheadle Endowed Scholarship Fund**  
Dr. Vernon I. Cheadle,\* Donor

**Kevin Sage Christensen 1992 Endowed Memorial Scholarship Fund**  
Estate of Carolyn Christensen,\* Donor

**Carnzu A. Clark Music Scholarship**  
Carnzu A. Clark, Donor

**Crowe Family Scholarship Fund**  
Linda and Stephen Crowe, Donors

**Barbara DeWolfe Scholarship Fund**  
Estate of Barbara DeWolfe,\* Donor

**The Joseph P. and Corinne J. Dox Scholarship Fund**  
Mr. and Mrs. Joseph Dox, Donors

**Duval Family Fund for Undergraduate Education**  
Bettina and Glenn Duval /'80, Donors

**Faculty Women's Club Scholarship Endowment**  
Faculty Women's Club, Donors

**Wendy Anne Finkel Memorial Scholarship**  
Dr. and Mrs. Max Finkel, Donors

**Harold Frank Entrepreneurial Scholarship Program**  
Anonymous, Donor

**Frank J. Frost and Amanda Clark Frost 1990 Charitable Remainder Unitrust**  
Frank J. Frost and Amanda Clark Frost, Donors

**The Gunther Family Scholarship Fund**  
Daniel and Katherine Gunther; Richard and Lois Gunther, Donors

**Donald B. Hamister Endowed Scholarship in Woodwinds**  
The Hamister Foundation, Donor

**The Edward Hass Memorial Fund**  
Mr. and Mrs. Andrew T. Hass, Jr.; Hass Charitable Remainder Unitrust, Donors

**Theodore W. Hatlen Fund**  
Theodore W. Hatlen,\* Donor

**Laura M. Hawkins Scholarship Fund**  
Estate of Laura M. Hawkins,\* Donor

**Ardis O. Higgins Scholarship in Scandinavian Music**  
Ardis O. Higgins,\* Donor

**Arianna and Michael Huffington Scholarship Endowment**  
Arianna and Michael Huffington, Donors

**Anna Bell Karr Scholarship Fund**  
Estate of Anna Bell Karr,\* Donor

**Kirby-Jones Foundation Endowment for Tennis**  
The Kirby Family Marital Trust, Tyrena and William Jones /'77, Donors

**Kirby-Jones Scholarship Fund in Honor of Skylar Jones, Finnegan Jones, Allyson Crowe and Sierra Jones**  
Mr.\* and Mrs. Robert Kirby /'51, Donors

**Kirby-Jones Scholarship Fund**  
Mr.\* and Mrs. Robert Kirby /'51, Donors

**Hazel S. Lagersen Fund**  
Estate of Hazel S. Lagersen,\* Donor

**Sara Miller McCune Endowed Internship and Public Service Program**  
Sara Miller McCune H '05, Donor

**Menon Watson/CCS Endowed Interdisciplinary Fund**  
Menon Watson Family Foundation, Donor

**Leal Anne Kerry Mertes Memorial Scholarship Fund**  
James T. Wells, Donor

**Samuel B. Mosher Foundation Scholarships**  
Margaret C. Mosher\* H '92, The Samuel B. and Margaret C. Mosher Foundation

**Music Affiliates Endowment Scholarship Fund**  
UCSB Music Affiliates, Donor

**Robert J. Offerman Scholarship in Intercollegiate Athletics**  
Barbara Offerman, Donor

**Marion and Dean Ramstad Scholarship Fund**  
Marion and Dean Ramstad, Donors

**The Marc Aurele Rieffel Endowment for Excellence in Music**  
Anonymous

**The David F. Siegel Award**  
Mr. and Mrs. Barry S. Siegel, Donors

**Claudia D. Weitlanner General Affiliates Scholarship**  
Claudia D. Weitlanner,\* Donor

**Adrian M. Wenner Scholarship Fund in the Sciences**  
Adrian M. Wenner, Donor

**Yardi Systems Endowed Scholarship in Computer Science**  
Yardi Corporation and Anonymous, Donors

**Zorich Family Scholarship Fund**  
Barbara and Robert Zorich '72/'71, Donors

UC Santa Barbara would also like to thank the generous donors who made gifts to the following endowed scholarship funds:

**Judy Bellomo Women's Volleyball Scholarship**

**Glen Culler Endowed Scholarship in Engineering**

**Louis Lancaster Scholarship Fund in Political Science**

**Paul N. and Elinor T. Lazarus Endowed Scholarship in Film and Media Studies**

**Kendra Chiota Payne Memorial Fund**

**UC Santa Barbara Alumni Scholarship Fund**

**University Center Scholarship Fund**

\*Deceased

## Honor Roll of Donors

### Lancaster Society

*UC Santa Barbara is grateful for the extraordinary support of our alumni, parents, friends, trustees of the UC Santa Barbara Foundation, corporations, and foundations who have contributed \$100,000 or more to the university over time. Through their commitment and leadership, these distinguished members of the Lancaster Society have helped build the university's reputation for teaching, research, and public service. The society is named for Louis and Winifred Lancaster, civic-minded philanthropists deeply committed to the public partnership that is at the heart of UC Santa Barbara. During their lifetimes, they helped establish UC Santa Barbara Foundation and worked tirelessly to build meaningful bridges between the university and the larger community. Their vision is sustained through the loyal generosity of today's members of the Lancaster Society, celebrated for their contributions to an enduring foundation for excellence at UC Santa Barbara.*

### Lancaster Society Founders CUMULATIVE DONORS \$50,000,000 AND ABOVE

#### Individual

Jeff and Judy Henley '66/H '09

### Lancaster Society Builders CUMULATIVE DONORS \$25,000,000 TO \$49,999,999

#### Individuals

Mr. Donald L. Bren, The Donald L. Bren Foundation

#### Organizations

Mentor Graphics  
Orfalea Family Foundation  
The David and Lucile Packard Foundation  
SAIC/Telcordia Technologies



*Performing live on campus*

### Lancaster Society Leaders CUMULATIVE DONORS \$10,000,000 TO \$24,999,999

#### Individuals

Ambassador Don\* and Marilyn Gevirtz H '96

Fred Kavli H '05, The Kavli Foundation  
Susan Lord and Michael Kambitsch

#### Organizations

The Boeing Company  
The John D. and Catherine T. MacArthur Foundation  
Mitsubishi Chemical Corporation  
Gordon E. and Betty L. Moore Foundation  
W.L. Gore & Associates, Inc.

### Lancaster Society Partners CUMULATIVE DONORS \$5,000,000 TO \$9,999,999

#### Individuals

Paul G. Allen, Vulcan Incorporated  
The William K. Bowes, Jr. Foundation  
Leonard\* and Gretchan Broom  
The Carsey Family Foundation  
Ms. Betty Elings Wells H '10  
Virgil Elings H '10  
Professor Duncan and Mrs. Suzanne Mellichamp H '09/ '70  
Sara Miller McCune H '05  
Judith C. Stapelmann '63, '65

#### Organizations

Anonymous  
American Cancer Society  
American Chemical Society  
The Donald Bren Foundation  
Fred Kavli, The Kavli Foundation & The Kavli Operating Institute  
W.M. Keck Foundation  
The Andrew W. Mellon Foundation  
National Science Foundation  
Raintree Foundation  
SAGE Publications, Inc.  
J.E. & Lillian Byrne Tipton Foundation

### Lancaster Society Gold CUMULATIVE DONORS \$1,000,000 TO \$4,999,999

#### Individuals

Anonymous (6)  
H.R.H. Prince Mohammed bin Fahd bin Abdulaziz, The Saudi Royal Family  
Dr. and Mrs. Guenter Ahlers  
Jody and John Arnhold /'75  
Mr. Richard A. Auhll  
Mr. Charles Den Bell\*  
Mark and Susan Bertelsen '66/'67  
Dan and Meg Burnham  
Mr. and Mrs. Stephen E. Cooper '68/'69  
Jack and Laura Dangermond, Environmental Systems Research Institute, Inc.  
Mr. Michael K. Douglas '68  
Dr. and Mrs. Jeffrey Dozier  
Mr. and Mrs. Robert W. Duggan  
Marsha and Jay Glazer Foundation  
Mr. Frederick W. Gluck  
Meg and John Gurley /'78, '83  
Judy and W. Roger Haughton '70/'69  
Dr. and Mrs. Alan J. Heeger  
Foundation for Research and Development in the Middle East  
Tara and George Holbrook, Holbrook Foundation Fellows for IEE  
Mr. F. Neal Hunter

Mr.\* and Mrs. Robert Kirby /'51  
Mr.\* and Mrs. Jon Lovelace  
Harry Lucas, Jr.  
The McCutchen Foundation  
Dr. Walter and Mrs. Thelma Mead  
Julie Ann Mock and Kent M. Vining '75/'70

Dr. Laurence Pilgeram  
Dr. and Mrs. Joseph H. Pollock H'10/  
Mr. Arthur N. Rupe H '08, Arthur N. Rupe Foundation  
Warren G. and Katharine S. Schlinger  
Fredric E. Steck '67, The Fredric E. Steck Family Foundation  
Dr. and Mrs. Theo Theofanous  
Michael and Anne Towbes  
Henry H. Wheeler, Jr.  
Dr. Richard and Paula Whited  
Mr. Bruce G. Wilcox '77  
Noelle and Dick Wolf  
Susan and Bruce Worster '70/'68, '71, The Worster Foundation  
Drs. Linda and Fred Wudl  
Patricia and Joe Yzurdiaga

#### Organizations

Anonymous (4)  
Agilent Technologies  
The Amgen Foundation  
Amgen, Inc.  
The Annenberg Foundation  
Applied Materials, Inc.  
Arnold and Mabel Beckman Foundation  
Veeco Instruments, Inc.  
Burrighs Wellcome Fund  
Cancer Center of Santa Barbara  
Cisco Systems, Inc.  
Michael J. Connell Trust  
Conservation International Foundation  
Corning, Inc.  
Cree, Inc.  
The Dana Foundation  
Deckers Outdoor Corporation  
The Dow Chemical Company  
The Camille and Henry Dreyfus Foundation, Inc.  
E.I. Du Pont de Nemours and Company  
Ford Foundation  
Ford Motor Company  
FPS Computing  
The William T. Grant Foundation  
Hellman Family Foundation  
Larry L. Hillblom Foundation  
Howard Hughes Medical Institute  
Hughes Research Laboratories  
IBM Research Division  
IBM Corporation  
Japan Pionics Company, Ltd.  
Robert Wood Johnson Foundation  
W.K. Kellogg Foundation  
Lilly Endowment, Inc.  
The Henry Luce Foundation  
Marisla Foundation  
The G. Harold and Leila Y. Mathers Charitable Foundation  
The Mericos Foundation  
Margaret C. Mosher\* H '92, The Samuel B. and Margaret C. Mosher Foundation  
Muscular Dystrophy Association  
Packard Humanities Institute  
Matsushita Electric Industrial Company, Ltd.  
Panasonic Electric Works, Ltd.  
The Pew Charitable Trusts  
Rainbow Optoelectronics Material Shanghai Co.  
The Rockefeller Foundation  
Rohm Company, Ltd.  
Santa Barbara Cottage Hospital  
Santa Barbara Foundation  
Seoul Optodevice Company, Limited

Silicon Valley Research  
The Simons Foundation  
Alfred P. Sloan Foundation  
Stanley Electric Company, Ltd.  
The Fredric E. Steck Family Foundation  
Sumitomo Chemical Company, Ltd.  
The TABASGO Foundation  
Tegal Corporation  
Teledyne Scientific Company  
John Templeton Foundation  
UCSB Alumni Association  
UCSB Alumni Vacation Center  
UCSB Associated Students  
Walton Family Foundation  
Zurich North America

### Lancaster Society Blue CUMULATIVE DONORS \$500,000 TO \$999,999

#### Individuals

Carol\* and Marshall Ackerman  
Dr. and Mrs. Mortimer Andron  
Jim Argyropoulos  
Sarah Argyropoulos  
Dr. Peter Bancroft '41  
Leinie Schilling Bard and Archie Bard\*  
Anton Vonk and Diane Boss '05  
David Kam W. and Betty Y. Chu  
Drs. John Carbon and Louise Clarke /'71, '73  
Mr. Paul Colombo, Applied EPI, Inc.  
Erika Davis  
Mr. and Mrs. James G.P. Dehlsen  
Michael D'Errico '92  
Lale and Tunç Doluca /'81  
Sallie and Paul Flum  
Theresa Wilson Flynn  
Scott and Jennifer Frank '82  
Mr. and Mrs. Gordon Getty  
Eleanor L.\* and Thomas J. Harriman  
Dan Healy  
Marilyn and Milton\* Honea  
M. Blair Hull '65, Hull Family Foundation  
Patrick Morrin and Janice Jagelski /'87  
Catherine and Franklin Johnson, Jr.  
Charlotte and Ross Johnson '70  
Harvey Karp  
Dr. Bruce H. Lipshutz  
Dr.\* and Mrs. Charles H. Markham  
Susan and Craig McCaw  
Janet Dunbar and Alex Pananides /H '06  
Mr. and Mrs. Steven C. Mendell '63  
Helen and Robert Peteler  
Mr. and Mrs. Michael Pulitzer  
Dr. and Mrs. Simon Raab  
Aaron\* and Cherie Raznick H '88  
Lord Paul Ridley-Tree\* and Lady Leslie Ridley-Tree /H '12  
Yvette Mimieux Ruby and Howard Ruby  
Arent\* and Jean Schuyler '61  
WT Family Fund  
Mrs. Jeanne C. Thayer  
Alzera Todd McCoy  
Sharon and John Todd  
Ted Waitt  
Lynda Weinman and Bruce Heavin, Lynda.com  
Drs. Susan and Gary Wilcox '70, '74/'69, '72  
Mr. John Cree Wilson III  
Mr. Michael Grant Wilson  
Carl B. Zytowski

#### Organizations

Anonymous (2)  
Air Products and Chemicals, Inc.  
American Council of Learned Societies  
American Economic Association  
American Heart Association  
Apple, Inc.





**Researchers conducting fieldwork**

AT&T Bell Laboratories  
 Alias System Corporation  
 Albert and Elaine Borchard Foundation, Inc.  
 Calouste Gulbenkian Foundation  
 Colorado State University  
 Dow Corning Corporation  
 DSM Research  
 Katherine Esau\* Trust  
 Exxon Research and Engineering Company  
 Friends of the UCSB Library  
 Bill and Melinda Gates Foundation  
 The J. Paul Getty Trust  
 Charlotte Geyer Foundation  
 Google, Inc.  
 William and Flora Hewlett Foundation  
 Hughes Electronics  
 Intel Corporation  
 International Foundation for Telemetering  
 The Japan Foundation  
 JDS Uniphase Corporation  
 Kearney Foundation  
 Konarka Technologies  
 Kresge Foundation  
 Eli Lilly and Company  
 March of Dimes Birth Defects Foundation  
 James S. McDonnell Foundation  
 The Nature Conservancy  
 The Ralph M. Parsons Foundation  
 Procter & Gamble  
 Rhodia, Inc.  
 Rowny Foundation  
 Shell International Chemicals B.V.  
 The Philip and Aida Siff Educational Foundation  
 Southern California Edison  
 The Spencer Foundation  
 Taipei Economic and Cultural Office  
 The Tatman Foundation  
 The Herman P. and Sophia Taubman Foundation  
 Tektronix, Inc.  
 Unilever Research  
 Varian Associates, Inc.  
 Wells Fargo Foundation  
 Whittier Family Foundations  
 William Wyles Library Board  
 Xerox Corporation

**Lancaster Society  
 CUMULATIVE DONORS  
 \$100,000 TO \$499,999**

**Individuals**

Anonymous (15)  
 Sara and Michael K. Abraham /'59  
 Barbara and Bill\* Alhouse '50/'49  
 Mr. and Mrs. Joseph Alibrandi

Ms. Janet A. Alpert '68  
 David and Lyn Anderson  
 Christine and Donald Anderson  
 Robert Arenz, Jr. '80,  
 Money/Arenz Foundation, Inc.  
 Mr. Stuart R. Atkins  
 Mr. Edward Bancroft  
 Dr. and Mrs. Leon O. Banks  
 Dr. Isaac and Mrs. Margaret Barpal '68, '70  
 Barbara and John Bartman  
 Bob and Carol Bason  
 Mr. and Mrs. Frank Baxter, The Baxter Family Foundation  
 Susan and Riley Betchel '78  
 Gary and Mary Becker  
 Wendy and Joel Bennett  
 Mr.\* and Mrs. Max D. Benton /'87  
 Arlene and Barrie Bergman  
 Mr. Barry Berkus and Family  
 Mr. and Mrs. Richard A. Berti  
 Bialis Family Foundation  
 Jill and John C. Bishop, Jr.  
 Johan F. Blokker, Jr. '80, '84  
 Sheila and Michael Blosignore  
 Drs. Thomas C. and Paula Yurkanis Bruice  
 Mr.\* and Mrs. Charles Burke  
 Dennis and Angelia Cagan  
 Dr. and Mrs. James F. Case  
 William and Mary Cheadle  
 Rufina and Chiu-Shan Chen  
 Shu-Ching and Edward Cheng  
 Mr. and Mrs. Bruce C. Corwin H '97,  
 Metropolitan Theatres Corporation  
 Linda and Stephen Crowe  
 Gayle and Craig R. Cummings '75/'72  
 Mr. and Mrs. James Dao  
 Mr. James G. Davidson '98  
 Barbara Warren '08  
 Dr. and Mrs. Steven P. DenBaars  
 William and Janet Dinsmore '68  
 Diane Dodds '68  
 Diandra de Morrell Douglas '82  
 Suzanne Duca '90  
 Linda Duttonhaver '77  
 Bettina and Glenn Duval /'80  
 Carol and Harvey Eisenberg  
 Barbara and Rune Eliassen  
 Ms. Julia Collier Emerson  
 Jan and Brian Escalera  
 Margo Cohen-Feinberg and Robert Feinberg  
 Audrey and Timothy Fisher  
 Drs. Amanda Clark Frost and Frank Frost '64, '66/'55, '61  
 Saraster Madison Garcia and Marshall Garcia  
 Genevieve and Lew Geyser  
 Steven and Deborah Ginder '71/'72  
 Mr. and Mrs.\* Irving Glazer  
 Mr. Paul F. Glenn

Dr. Steven Humphrey and Mrs. Sue Grafton  
 Patricia Gregory  
 Mr. and Mrs. Rusty Gregory  
 Norman and Jane Habermann  
 Mr.\* and Mrs. Stephen Hahn  
 Dr. and Mrs. Yoel Haller  
 Hamister Foundation  
 Roy and Janet Hardiman '81, '83  
 Mr. and Mrs. Andrew T. Hass, Jr.  
 Dr. Craig Hawker and Ms. Athena Philippides  
 Juliane M. Heyman  
 The Roger Himovitz Family  
 Judith L. Hopkinson  
 Mr. David Bermant\* and Ms. Susan Hopmans, The Bermant Foundation  
 Alan and Cindy Horn  
 Mrs. Robert Ingle Hoyt  
 Arianna Huffington  
 Ena and Cyril Humphris  
 Walter and Sharon Iberti, The Iberti Foundation  
 Joan and Palmer Jackson  
 Ellen and Steven Jackson  
 Lucille and Richard Janssen  
 Tyrena and William Jones /'77  
 Mr. and Mrs. Peter C. Jordano H '03,  
 Jordano's Inc., Pacific Beverage Company  
 Eric Kanowsky  
 Dr. and Mrs. Narinder Kapany, Sikh Foundation, U.S.A.  
 Kenneth Karmiole '68  
 Patricia and Keith Kedward  
 Mr. and Mrs. James J. Keenan H '02  
 Elaine and Herbert Kendall  
 Thomas J. Kenny and Susan A. McMillan '86  
 Mr. and Mrs. Essam Khashoggi  
 Mrs. Edward A. Killingsworth  
 Lynn and Robert Koegel  
 Dr. and Mrs. Walter Kohn  
 Masako and Hiro Kozato /'85  
 Franca and Moyses Kuchnir  
 Nikki and Steven Lafferty /'75  
 Lancaster Appointive Trust  
 R. Marilyn Lee and Harvey Schneider '69  
 Nancy Lessner and Paul Glenn  
 Denise and George Lilly  
 Carl and Jo Lindros  
 Mark D. Linehan '85  
 Kristin and William Loomis  
 Dr. Francine Lotery  
 Robert Lovgren '62  
 Stuart and Hannelore Mabon  
 Barbara and Hadi Makarechian  
 Bernadette and Timothy Marquez  
 Mr. and Mrs. John Marren '85  
 Mr. Kenneth P. Maytag  
 Marilyn and Richard Mazess  
 The Wendy P. McCaw Foundation  
 Tina Hansen McEnroe and Paul V. McEnroe '89  
 Victoria and Robert Mehrabian  
 Karl Lopker and Pamela Meyer Lopker '73/'77  
 Dr. and Mrs. Umesh K. Mishra  
 John Mithun, Mithun Family Foundation  
 William and Martha Mowry  
 Michael A. Nachman  
 Dr. Shuji Nakamura  
 Katherine and Paul Page  
 Louise and Stephen Pahl '77/'77  
 William and Kristen Parrish '73, '75/'89  
 Philip and Sylvia Peatman  
 Mary and Gust Perlegos  
 Jean Pettitt  
 Jackie Schmidt-Posner and Barry Posner '70/'70  
 Margot and Thomas Pritzker

Mr. and Mrs. Robert L. Raede, Jr. '80/'80  
 Dean and Marion Ramstad  
 The Rathmann Family Foundation  
 Mr. and Mrs. Lynn P. Reitnouer '55/'54  
 Dr. Andrea Rich  
 Mr. H. Smith Richardson III  
 Al Rodriguez  
 Richard Rosen '75  
 Dr. and Mrs. Richard Ryu  
 Michael Saucier '83, '84  
 Saudi Royal Family  
 Carol Schmitz  
 Berta and Rudi\* Schulte  
 Mr. and Mrs. Mark J. Schwartz '84  
 Stanley K. and Betty W. Sheinbaum  
 Mitchell Shernoff '99  
 Tana Sommer-Belin  
 Mrs. Lynette G. Fiqueras-Spievak and Mr. Jason Spievak '90/'90  
 Marianne and Norman Sprague /'69  
 William Stensrud  
 Danelle Storm Rosati and Mario Rosati '77  
 Dr. and Mrs. Robert M. Talley H '99/  
 Jim and Denise Taylor  
 Daphne and Greg Tebbe  
 Nicholas L. Teti, Jr.  
 Mr. and Mrs. William Thormahlen '77  
 Mrs. Alice Tokuyama  
 Diane and David Toole Foundation  
 Jo Beth and Donald\* Van Gelderen  
 Dr. and Mrs. Daniel Vapnek  
 Mr. and Mrs. Robert L. Veloz  
 James Warren '76  
 Vinita Menon Watson and David Watson '99/'99  
 Marsha and William Wayne  
 Claudia and Alec Webster '75/'76  
 Wege Foundation  
 Mr. Daniel Weinberg  
 Lisa and Howard Wenger '82/'82  
 Ann and Philip White /'84  
 Ralph E. Wiggen  
 John Wilczak  
 Richard Williams '59, The Richard Williams Family  
 Peter Wissner  
 Justina and Ming-Shian Wu  
 Mr. Tomonori Yamada, Toshiko Ushikama Memorial Fund  
 Henry and Dilling Yang H '01  
 Dr. Huican Zhu '00  
 Michael and Diane Ziering '78  
 Barbara and Robert Zorich '72/'71  
 Zanna and Richard Zulch '82

**Organizations**

Anonymous (5)  
 3M Foundation  
 Abbott Laboratories  
 Accelrys, Inc.  
 Advanced Projects Research, Inc.  
 AECOM  
 Agilent Technologies Foundation  
 Allergan Foundation  
 Allon Therapeutics, Inc.  
 Aluminum Company of America  
 Alzheimer's Association  
 American Educational Research Association  
 American Health Assistance Foundation  
 AMP Incorporated  
 Amplimed Corporation  
 Anritsu Company  
 Applied Molecular Genetics  
 Arcadia Design Systems, Inc.  
 ARCO Foundation  
 Arcus Foundation  
 ArgusSenses  
 The Association for the Cure of Cancer of the Prostate

Note: UCSB graduation years for joint donors are listed consecutively, for example: '71/'71

Avago Technologies, Argos Acquisition Ltd.  
 The Balm Foundation, Inc.  
 Bank of America Matching Gifts Program  
 Bay Networks, Inc.  
 David W. Bermant Revocable Trust  
 BHP Billiton  
 Blue Moon Fund, Inc.  
 David Bohnett Foundation  
 Bosch Corporate Research and Development  
 James S. Bower\* Foundation  
 BP America, Inc.  
 Bristol-Myers Products  
 Bruker Daltonik GmbH  
 BSST  
 Cadence Design Systems, Inc.  
 Calera Corporation  
 California Fire Safe Council, Inc.  
 California Institute of Technology  
 California State University  
 California Wellness Foundation  
 Canadian Institute for Advanced Research  
 Canadian Pacific Charitable Foundation  
 Capital Group Companies, Inc.  
 Capitol Specialty Plastics, Inc.  
 Catalytic Solutions  
 Charitable Gift Fund  
 ChevronTexaco  
 Chevron Products Company  
 Chevron U.S.A., Inc.  
 Chiang Ching-Kuo Foundation  
 Chicago Community Trust  
 Jane Coffin Childs Memorial Fund  
 Chiron Corporation  
 Pierre Claeysens Veterans Museum & Library  
 Clorox Corporation  
 Convergent Technologies, Inc.  
 Jack Kent Cooke Foundation  
 Corning Corporation  
 Corning Incorporated Foundation  
 The Council for Tobacco Research, U.S.A.  
 Council on Library and Information Resources  
 Courtroom Television Network  
 Cure PSP Foundation  
 Deloitte Foundation  
 Delta Psi Building Company  
 Depotech Corporation  
 Robert W. Deutsch Foundation  
 Dialogic Corporation  
 Digital Equipment Corporation  
 Doheny Eye Institute  
 Doris Duke Charitable Foundation  
 Eastman Kodak Company  
 Educational Advancement Foundation  
 El Adobe Corporation  
 Ellison Medical Foundation  
 EMD Millipore Corporation  
 Environmental Systems Research Institute, Inc.  
 Envision Systems, Inc.  
 Epitronics Corporation  
 Equistar  
 Ernst & Young Foundation  
 Exxon Chemical Co-Paramins  
 Exxon Mobil Foundation  
 Erna V. Fisher\*  
 Fisher-Rosemount Systems, Inc.  
 Ford Motor Company Fund  
 Foundational Questions Institute (FQXi)  
 Franciscan Friars  
 Fuji Electric Company, Ltd.  
 Furukawa Electric Company, Ltd.  
 GE Foundation  
 GE Global Research  
 GlaxoSmithKline  
 Godric Foundation

Goethe Institute Los Angeles  
 GRT, Inc.  
 Gwangju Institute of Science and Technology  
 Haddad Family Trust  
 Eleanor L. and Thomas J. Harriman  
 The John Randolph Haynes and Dora Haynes Foundation  
 The William Randolph Hearst Foundations  
 Hewlett-Packard  
 Hewlett-Packard Company  
 Hewlett-Packard Laboratories  
 Hewlett-Packard Logic Systems  
 Hoechst Celanese Corporation  
 Hoffman-La Roche, Inc.  
 Honeywell, Inc.  
 HopeLab  
 Huawei Technologies  
 Hughes Aircraft Company  
 Hutton Foundation  
 IBM Matching Grants Program  
 IBM T. J. Watson Research Center  
 ICI Group Technology  
 ImmunoGen, Inc.  
 Institut Ramon Llull  
 The Institute for Advanced Study  
 Institute for the Study of American Religion  
 Instituto Camoes  
 International Fine Particle Research, Inc.  
 International Human Dimensions Programme  
 International Retinal Research Foundation  
 International Shinto Foundation  
 Intrawest Mammoth Corporation  
 The James Irvine Foundation  
 The Jacobs Family Foundation  
 JDS Uniphase  
 Johnson Controls, Inc.  
 The Walter S. Johnson Foundation  
 Juvenile Diabetes Foundation  
 Max Kade Foundation, Inc.  
 The Henry J. Kaiser Family Foundation  
 Barbara Ann Karmanos Cancer Institute  
 Klein Bottle Youth Program  
 Korea Advanced Institute of Science and Technology  
 Kraft Foods, Inc.  
 Kraton Polymers  
 Samuel H. Kress Foundation  
 Kyoei Steel Corporation  
 La Centra-Sumerlin Foundation  
 Las Cumbres Observatory  
 Lorser and Helen L. Feitelson Arts Foundation  
 Lucent Technologies  
 The Chuan Lyu Foundation  
 Macula Vision Research Foundation  
 Mammoth Mountain Ski Area  
 Marine Review Committee, Inc.  
 The May Department Stores Foundation  
 MC Research and Innovation Center, Inc.  
 Mediascope  
 Medimunne, Inc.  
 Merck and Company, Inc.  
 Metropolitan Theatres Foundation  
 Microsoft Research Limited  
 Mitsubishi Chemical USA, Inc.  
 Molecular Simulations, Inc.  
 Montecito Bank & Trust  
 Nanoelectronics Research Corporation  
 NARSAD  
 National Academy of Education  
 National Action Council for Minorities in Engineering, Incorporated  
 National Aeronautics and Space Administration



*Art, science, and engineering converge in the AlloSphere*

National Fish and Wildlife Foundation  
 National Geographic Society  
 National Multiple Sclerosis Society  
 National Park Foundation  
 National Semiconductor  
 National Trust for the Humanities  
 NEC Corporation  
 NEC USA, Inc.  
 Neste Jacobs Corporate R&D  
 Nestle Research Center  
 Nippon Telegraph and Telephone  
 NKD Company, Limited  
 Nokia Incorporated  
 The Kenneth and Eileen Norris Foundation  
 Northrop Grumman Space & Mission System Corporation  
 Ocean Conservancy  
 Spencer T. and Ann W. Olin Foundation  
 Orfalea Foundation  
 The Bernard Osher Foundation  
 OSI Software, Inc.  
 Outhink  
 Pacific Beverage Company  
 The Patent Office Japanese Government  
 Edwin W. Pauley Foundation  
 Juanita Peterson\*  
 PG & E Corporation  
 Kathryn Pollak\*  
 Pratt & Whitney  
 Procter & Gamble Company  
 The Ceil and Michael E. Pulitzer Foundation  
 QAD, Inc.  
 QUALCOMM, Inc.  
 Raychem Corporation  
 Raytheon Company  
 Research Corporation  
 Resources Legacy Fund  
 Smith Richardson Foundation  
 The Shelley and Donald Rubin Foundation  
 Damon Runyon-Walter Winchell Cancer Fund  
 Russell Sage Foundation  
 Saint-Gobain Ceramics & Plastics, Inc.  
 Saint-Gobain Recherche  
 Samsung Electronics Co., Ltd.  
 Sandia National Laboratories  
 Santa Barbara Bank & Trust  
 Santa Barbara Museum of Art  
 Santa Barbara Remote Sensing  
 Schmidt Research Vessel Institute  
 Seismic Micro-Technology  
 Semiconductor Research Corporation  
 Shell Development Company  
 Shell Oil Company Foundation  
 Shimadzu Corporation

Silicon Valley Bank  
 Silicon Valley Community Foundation  
 Society for Conservation Biology  
 Sony Corporation  
 Sony Corporation of America  
 Sony Electronics Inc.  
 Sony Pictures Entertainment, Inc.  
 Space Telescope Science Institute  
 Starbuck, Tisdale and Associates  
 Ruth and Milton Steinbach Fund, Inc.  
 Stradling Yocca Carlson & Rauth  
 The Stuart Foundation  
 Sun Microsystems Foundation, Inc.  
 Sun Microsystems, Inc.  
 Synopsys, Inc.  
 Taiwanese American Foundation of San Diego  
 Takatori Corporation  
 TELACU Education Foundation  
 Telesis Foundation  
 Texas Instruments  
 Tides Foundation  
 The Times Mirror Foundation  
 Tinker Foundation Incorporated  
 Titan Pharmaceuticals, Inc.  
 Toyota Motor Sales U.S.A., Inc.  
 TRW Space and Electronics Group  
 U.S.-Israel Binational Science Foundation  
 UCSB Affiliates  
 UCSB Music Affiliates  
 United Negro College Fund Inc  
 United Seal Coat & Slurry Seal Inc.  
 United States Army Research  
 United Technologies  
 University Art Museum Council  
 University of Aberdeen  
 Veeco Saint Paul, Inc.  
 J. Craig Venter Institute  
 Verizon Communications  
 Verizon Foundation  
 The Vidda Foundation  
 Waitt Foundation  
 The Wallis Foundation  
 Andy Warhol Foundation for the Visual Arts  
 Warner Brothers Digital Distribution  
 Washington Mutual Bank Foundation  
 Wells Fargo Matching Gift Center  
 Weyerhaeuser Company  
 The Whitaker Foundation  
 Whitehall Foundations, Inc.  
 Wilburforce Foundation  
 The Dean Witter Foundation  
 Wood-Claeysens Foundation  
 Xerox Foundation  
 Xilinx, Inc.  
 Yardi Systems, Inc.  
 The Yosemite Foundation



## Legacy Circle

*The Legacy Circle honors alumni, friends, faculty, and staff who have included UC Santa Barbara in their estate plans through some form of planned gift. Membership in the society is extended to those who have communicated to the university their intention to make a gift through a bequest, charitable trust, charitable gift annuity, pooled income funds, life insurance, retirement fund, or a gift of property with a retained life estate. The following generous donors are providing the legacy of support that will enable UC Santa Barbara to continue to grow and excel.*

Anonymous (11)  
Carol\* and Marshall Ackerman  
Dr. Dana T. Aftab '85  
Dr. and Mrs. Guenter Ahlers  
Elizabeth Allred\* '62  
Ms. Janet A. Alpert '68  
Christine and Donald Anderson  
Dr. and Mrs. Gregory S. Aposperis /'66  
Ms. Bluma Appel\*  
Louise V. Arnold\*  
Richard F. Aster, Jr.\* '63, '65  
Dr.\* and Mrs.\* Stuart P. Atkins  
Mr. Stuart R. Atkins  
Natalie O. Atkinson\* '47  
Lawrence Badash\*  
Drs. John D. and Janice Baldwin /'82, '84  
Dr. and Mrs. Peter Bancroft '41/  
Virginia Bancroft\*  
Leinie Schilling Bard and Archie\* Bard  
Charles H. Barnes\* '34  
Itzik and Marge Barpal '68, '70/  
Dr. and Mrs. Steven J. Bartlett '68/'68, '70  
June York Behrens and Henry\* W. Behren '47/ '48  
George Bernard Hammerle  
Donn R. Bernstein H '79  
Mark and Susan Bertelsen '66/'67  
Dr. Denise Bielby  
Dr. William T. Bielby  
Ambassador Barbara K. Bodine '70  
Dr. Eric H. Boehm  
Ms. Helen R. Borges\*  
Irving B. Bricken\*  
Leonard\* and Gretchan Broom  
June and Todd\* Brouhard '54/H '55

Dr. and Mrs. William A. Bullough '55, '67, '70/  
Mr.\* and Mrs. Charles Burke  
Joseph and Nancy\* Byrne  
Ina Theresa Campbell\*  
Janet Lea Campbell '74  
Mr. and Mrs. Roger Capps  
Vernon I.\* and Mary Low\* Cheadle H '90/H '90  
Mrs. Isabel K. Chissar\*  
Carolyn\* S. Vernon\* G. Christensen  
Mathilda Christiansen Kuehl\* '62  
David Kam W. and Betty Y. Chu  
Marvin Clarke\* '51  
Ms. Marjorie A. Cole '64  
Flora Courtois\*  
Ruth and Nelson\* Culver  
Mr.\* and Mrs.\* Eugene Davidson  
Mr. Burt L. Davis\* '78  
Mrs. Louise Lowry Davis\*  
Dr. Steven DenBaars and Susan Eng-DenBaars  
Dr. Robert\* and Mrs. Barbara\* B. DeWolfe  
William and Janet Dinsmore '68/  
Carol and James Dixon  
Dean William Dorn  
Linda T. Dozier and Professor Jeff Dozier  
Drs. Dudley\* Duncan and Beatrice\* Farwell Duncan  
Mrs. Alison Duncan Egus\*  
Mercedes H. Eichholz  
Dr. Katherine Esau\*  
Mr. Bulent Ezal  
Joyce and Garold Faber '65/  
Dr.\* and Mrs.\* Maurice E. Faulkner  
Howard\* and Jean Fenton  
Vasanti Ferrando Fithian '60  
Mr. Peter\* R. and Mrs. A.\* Helen Fricker  
Drs. Amanda Clark Frost and Frank Frost '64, '66, '75/'55  
Lloyd\* W. Garrison and Jane\* D.Garrison '41/'41  
Mr. and Mrs. Ben G. Gautier '41/  
Dr. David\* and Mrs. Patricia\* Gebhard Beverly\*J. Georgeou and James\*C. Georgeou\* /'51  
Ambassador Don\* and Marilyn Gevirtz /H '96  
Mr. Blaine Gibson  
Lois and Frank\* Goodall '48/ '51  
Professor and Mrs. Chauncey S. Goodrich  
James\* C. and Liz\* Greene /'37  
Dr. John M.\* and Betty M.\* Groebli '46/ '52  
Marc Grossman '73  
Mr. Daniel Haight '63  
Mr. and Mrs. Andrew T. Hass, Jr.

Dr.\* and Mrs. Theodore W. Hatlen H'93/  
Juliane M. Heyman  
Mrs. Ardis O. Higgins\* H '88  
Joseph\* O. and Elizabeth\* S. Hirschfelder  
R. Stephen and Gail S. Humphreys  
Ms. Alice H. Iverson\*  
Susan Schwank Jamgochian '63, '81  
Bonnie and Richard Jensen /H '06  
James A. Jimenez\*  
Norman Johnson\*  
Mr. Kenneth Karmiole '68  
Mitchell Kauffman and Joanne Moran '77/  
Ms. Vivian King '87  
William A. Kitchen and Linda R. Kitchen  
R. Marilyn Lee and Harvey A. Schneider '69/  
Susan and Andy Lentz  
Ms. Jody A. Linick and Mr. Christer Haggult '85/  
Mrs. Marjorie D. Linton\* '56  
Dr.\* and Mrs. Robert L. Lorden '49/  
Mr. Bruce Lumbard\* '70  
Gayle Lynds  
Carolyn Street Maddock and Thomas Maddock '61/  
Miss Margaret Mallory\*  
York T. Mandra  
Jack\* and Anthea Mannion  
Carmen Anita Manus Trust  
Ricki Vinyard Marder and David Marder '79  
Dr. Richard M. Martin and Penny J. Martin  
Ronald\* L. and Carol\* Mays '58/  
Nancy McCagney, Ph.D '84, '91  
Betty Fobair McDermott '51  
Marilynn and James McNamara '82/'85  
Jennifer\* and Bruce McRoy  
Dr. Walter and Mrs. Thelma Mead  
Professor Duncan and Mrs. Suzanne Mellichamp H '09/ '70  
Mr.\* and Mrs.\* Anthony Menk Alexandra Meshkov '79,'83  
Dr.\* and Mrs.\* Robert S. Michaelsen  
Ismene Michou\* '53  
Sara Miller McCune H '05  
Julie Ann Mock and Kent M. Vining '75/'70  
Dr. Alfred Kummer Moir\*  
Mr. and Mrs. Chester G. Moore III \*64/  
William R. Moran\*  
Joan F. Mortell\*  
Melvyn L. and Edwina L. Mortensen '63, '65/  
Margaret C. Mosher\* H '92, The Samuel B. and Margaret C. Mosher Foundation  
In Loving Memory of Al and Marjorie Nasser  
Dr. Frank\* and Mrs. Sandra Nicassio '79/  
Mrs. Arnold Nordsieck\*  
Dr. Jon A. Norman '70, '72  
George\* and Vivian Obern  
Dr. Thomas Payne and Alice Lewis Payne '65/'65  
Col.\* and Mrs.\* Maxwell C. Pellish '61/  
Garie and Ken Perry  
Laurence Pilgeram  
Dr. and Mrs. Joseph H. Pollock H'10/  
George\* W. and Edith\* Rickey  
Dr. Frank W.D. Ries\*  
Carla S. Roddy '69  
Mr. and Mrs. Bernard Sandler  
Dr.\* and Mrs.\* Robert A. Scalapino '40/  
Dr.\* and Mrs.\* Richard Schamberg  
Harvey B. and Hope M. Schechter '47/  
Mr. and Mrs. Jeffrey Schlageter '65, '67/'65  
Mrs. Judith A. Schnibbe and Mr. Richard J. Schnibbe /'72  
Hester\* and Harold\* Schoen /'32

Mrs. June H. Schuerch\*  
Catherine Schumann\*  
Dr.\* and Mrs.\* Elman Service  
Dr.\* and Mrs.\* Alexander Sesonske  
Harriet and Henry Sharp  
Candace A. and David L. Short '67/'62  
Arthur Silver  
Dr. Vera Skubic\*  
Connie Smith  
Dr. Norman Spears\*  
Margaret Specht\*  
Ms. Sally Andrews Sphar '73  
Dean\* W. and Barbara\* F. Spooner '51/'55  
Judith Cosdon Staplemann and Jack Stapelmann '63, '65/  
Dr. and Mrs. Robert M. Talley H '99/  
Mr. Don Tosti\*  
Renee Trenholm and Susan Romero  
Ms. Faye M. Ullom\* '47  
Mr.\* and Mrs.\* Edward Valentine  
Dr. James P. Vanyo\*  
Frank\* and Frances\* Velek '64/  
John\* and Carolyn H.\* Wack /'37  
Ms. Shirley F. Watkins\*  
Drs. Lorraine McDonnell and Stephen Weatherford  
Cyndi and Stephen Weeks /'71  
Ms. Claudia D. Weitlanner\*  
Lisa and Howard Wenger '82/'82  
Hilda and Adrian Wenner  
Robert F. Whitlow\* '71  
June and Knox Williams '59/  
Dr.\* and Mrs.\* Lawrence Willson  
Ralph and Irene Wilson '70/'66  
Dr.\* and Mrs.\* Samuel A. Wofsy  
Janice\* and John\* Zoeger

## Chancellor's Council

*The Chancellor's Council, UC Santa Barbara's premier annual giving program, recognizes donors of \$1,000 or more to the university. These gifts are essential to building and maintaining the overall excellence of the campus. They may be unrestricted for use where the need is greatest, or restricted to support a specific department or program. UC Santa Barbara honors and celebrates alumni, friends, parents, and trustees of the UC Santa Barbara Foundation for their ongoing partnership and commitment to the future of this great university.*

### CHANCELLOR'S COUNCIL STORKE ASSOCIATES \$50,000 AND ABOVE

Anonymous (11)  
H.R.H. Prince Mohammed bin Fahd bin Abdulaziz, The Saudi Royal Family  
Marshall Ackerman  
Dr. and Mrs. Guenter Ahlers  
David and Lyn Anderson  
Jody and John Arnhold /'75  
Mr. Richard A. Auhll  
Isaac and Margaret Barpal '68, '70  
Susan and Riley Betchel '78  
Arlene and Barrie Bergman  
Mark and Susan Bertelsen '66/'67  
Anton Vonk and Diane Boss '05  
Mr. and Mrs. William K. Bowes, Jr.  
Dan and Meg Burnham  
Mrs. Marcia L. Carsey H '04  
Jack and Laura Dangermond  
Erika Davis



*Chancellor Henry T. Yang leading the procession at commencement*

Michael D'Errico '92  
 Lale and Tunç Doluca /'81  
 Mr. Michael K. Douglas '68  
 Suzanne Duca '90  
 Mr. and Mrs. Robert W. Duggan  
 Linda Duttenhaver '77  
 Ms. Betty Elings Wells H '10  
 Virgil Elings H '10  
 Audrey and Timothy Fisher  
 Sallie and Paul Flum  
 Saraster Madison Garcia and Marshall Garcia  
 Marsha and Jay Glazer  
 Mr. Paul F. Glenn  
 Meg and John Gurley /'78, '83  
 Roy and Janet Hardiman '81, '83  
 Dr. Craig Hawker and Ms. Athena Philippides  
 Dr. and Mrs. Alan J. Heeger  
 Jeff and Judy Henley '66/H '09  
 Prince Moulay Hicham of Morocco  
 Tara and George Holbrook  
 M. Blair Hull '65  
 Ena and Cyril Humphris  
 Patrick Morrin and Janice Jagelski /'87  
 Lucille and Richard Janssen  
 Catherine and Franklin Johnson, Jr.  
 Harvey Karp  
 Fred Kavli H '05  
 Thomas J. Kenny and Susan A. McMillan '86  
 Marvel Blakeman Kirby '51  
 Masako and Hiro Kozato /'85  
 Franca and Moyses Kuchnir  
 Nikki and Steven Lafferty /'75  
 Nancy Lessner and Paul Glenn  
 Harry Lucas, Jr.  
 Barbara and Hadi Makarechian  
 Susan and Craig McCaw  
 Charles McCutchen  
 Dr. Walter and Mrs. Thelma Mead  
 Victoria and Robert Mehrabian  
 Karl Lopker and Pamela Meyer Lopker '73/'77  
 Sara Miller McCune H '05  
 John Mithun  
 Kent M. Vining and Julie Ann Mock '70/'75  
 Orfaea Foundation  
 Mary and Gust Perlegos  
 Dr. and Mrs. Joseph H. Pollock  
 Mr. and Mrs. Michael Pulitzer  
 Dr. and Mrs. Simon Raab  
 Lord Paul Ridley-Tree\* and Lady Leslie Ridley-Tree  
 Al Rodriguez  
 Richard Rosen '75  
 Michael Saucier '83, '84

Warren G. and Katharine S. Schlinger  
 Arent\* and Jean Schuyler '61  
 Judith C. Stapelmann '63, '65  
 Fredric E. Steck '67  
 Dr. and Mrs. Theo Theofanous  
 Michael and Anne Towbes  
 Ted Waitt  
 Claudia and Alec Webster '75/'76  
 Lynda Weinman and Bruce Heavin  
 Henry H. Wheeler, Jr.  
 Ann and Philip White /'84  
 Dr. Richard and Paula Whited  
 Mr. Bruce G. Wilcox '77  
 Noelle and Dick Wolf  
 Susan and Bruce Worster '70/'68, '71  
 Drs. Linda and Fred Wudl  
 Patricia and Joe Yzurdiaga  
 Dr. Huican Zhu '00  
 Barbara and Robert Zorich '72/'71

**YOUNG ALUMNI CHANCELLOR'S COUNCIL STORKE ASSOCIATES \$25,000 AND ABOVE**  
 Anonymous  
 Will Meredith '04

**CHANCELLOR'S COUNCIL TOWER ASSOCIATES \$25,000 - \$49,999**  
 Anonymous (2)  
 Dennis Aigner and Camille Bertolet  
 Ms. Janet A. Alpert '68  
 Mr. Stuart R. Atkins  
 Ellen and Gary Bialis  
 Johan F. Blokker, Jr. '80, '84  
 Sharon and Terry Bridges  
 Kathryn and William Calise  
 William and Mary Cheadle  
 Marcia and John Cohen  
 Linda and Stephen Crowe  
 Diane Dodds '68  
 Sue Leslie Dougherty '94  
 Diandra de Morrell Douglas '82  
 Melissa and Timothy Draper  
 Bettina and Glenn Duval /'80  
 Gwen Eagleton  
 Helen Farrell  
 Margo Cohen-Feinberg and Robert Feinberg  
 Scott and Jennifer Frank '82  
 Debra and Dan Gerber  
 Bobbi and David\* Giorgi  
 Dr. Steven Humphrey and Mrs. Sue Grafton  
 Michael Hackney '68, '70  
 Judith L. Hopkinson  
 Alan and Cindy Horn  
 Tyrena and William Jones /'77

Terilynn L. Langsev '79  
 Robert Lovgren '62  
 Mr. and Mrs. John Marren '85  
 Tina Hansen McEnroe and Paul V. McEnroe '89  
 Suzanne and Robert Moon  
 Sheila and Gordon Morrell /'76  
 Mary and Roger Nisbet  
 Pamela and Pierre Omidyar  
 Louise and Stephen Pahl '77/'77  
 Barbara and Donald Raymond  
 Beth Rudin DeWoody  
 Laurie and Joseph Scanlin '59/'57  
 Carol Schmitz  
 Dr. Kirpal Singh  
 Cynthia and Henry Stansbury  
 Mr. Marty F. Stone '82  
 Deborah and Douglas Troxel  
 Jo Beth and Donald\* Van Gelderen  
 Drs. Stephen Weatherford and Lorraine McDonnell  
 Lisa and Howard Wenger '82/'82  
 Drs. Susan and Gary Wilcox '70, '74/'69, '72  
 Henry and Dilling Yang H '01  
 Andre Yew

**YOUNG ALUMNI CHANCELLOR'S COUNCIL TOWER ASSOCIATES \$12,500 TO \$24,999**  
 Jay Freeman '03

**CHANCELLOR'S COUNCIL ASSOCIATES \$10,000 TO \$24,999**  
 Anonymous (5)  
 Paul Amar  
 Robert Arenz, Jr. '80  
 Susan and John Axline  
 Christine and Darrell Baker  
 Mrs. B.R. Baker  
 Peter Baldwin  
 Bob and Carol Bason  
 Carolyn and William Beaver  
 Leslie and Doug Beck  
 Gary and Mary Becker  
 Laurie and William Kauth '69/'78  
 Donn R. Bernstein H '79  
 Fred C. Best  
 Jill and John C. Bishop, Jr.  
 Mary and John Blair /'82  
 Robert Boughton III '80  
 Sally Anne Boughton  
 Richard and Kathryn Breaux '67/'68  
 Kris and Alex Brodie /'88  
 Julia and Jeff Brody  
 Diane and Philip Brotherton /'83  
 Catherine and Richard Brown  
 Drs. Thomas C. and Paula Yurkanis Bruice  
 Patricia and William Bullough /'55, '67, '70  
 Mary Burchill and Mark Maxson '76/'75  
 Teresa Burns Gunther and Andrew Gunther '79  
 Kimberly and Andrew Busch  
 Annette and Richard Caleel  
 Paulette and John Callahan  
 Jorge Carvalho  
 Claudia Chao  
 Sarah and Roger Chrisman  
 Jay Cohen and Laura Cox '84/'83  
 Shelley and Herbert Cole  
 J.W. and Sue Colin  
 Karla and Peter Conmy '83  
 Joan Otomo-Corgel and Richard Corgel  
 Mr. and Mrs. Bruce C. Corwin H '97  
 Rafael Costas '86  
 Debra Crawford  
 Gayle and Craig R. Cummings '75/'72  
 Nancy and Roger Davidson  
 Nancy and James Demetriades

Lisa and Scott Dettmer /'78  
 William and Janet Dinsmore '68  
 Lisa and Peter Douglas  
 Mr. and Mrs. Joseph Dox  
 Kathleen and Harold Drake  
 Janet Dunbar and Alex Pananides /H '06  
 Barbara and Rune Eliassen  
 Jan and Brian Escalera  
 Bural Etheredge  
 Joyce and Garold Faber '65  
 Miriam and Richard Flacks  
 Malin and Chris Fletcher /'77  
 William and Christine Fletcher  
 Dr. Peter C. Ford and Dr. Mary Howe-Grant  
 Terri and Stephan Frenkel  
 Patti Freudenburg  
 Diane Gale '85  
 Dr. Yolanda M. Garcia '70, '72, '76, '93, '98  
 Dr. Carol A. Geer  
 John\* and Faith Geoghegan '59/'59  
 Mr. and Mrs. Gordon Getty  
 Karin Graver and Stepan Haytayan  
 Patricia Gregory  
 Mr. and Mrs. Rusty Gregory  
 Peter and Sandra Griffin '87  
 Mr.\* and Mrs. Stephen Hahn  
 Saida and Jamal Hamdani  
 Eleanor L.\* and Thomas J. Harriman  
 Drs. Rachel Haymon and Kenneth MacDonald  
 Parminder and Herbert Head  
 David Hendrickson '80  
 James Heslin and Rose Hau '73  
 Pamela Hesse  
 Juliane M. Heyman  
 Mr. Steven M. Hilton  
 Chi-Hua Ho  
 Laurence and Brian Hodges  
 Bonnie and Richard Jensen /H '06  
 Kimberly and Jack Johnson '97/'97  
 Christina and Deepak Kamra  
 Anne and James Katzaroff '79/'81  
 Landon Kelt  
 Elaine and Herbert Kendall  
 R. Michael Koch and Jane A. Lee '89  
 Lynn and Robert Koegel  
 Jack and Kay Krouskup '71/'71  
 Francis Kuhn and Nadiene Norton Kuhn  
 Eugene Kwok '00  
 Jennifer and Christopher Latimer  
 Melissa and Clinton Lau '82/'82  
 Suzette Lawrence  
 Janet and Edward Lee  
 Ruth and Jack Lemein '66  
 Gretchen and Robert Lief  
 Kristin and William Loomis  
 Mr.\* and Mrs. Jon Lovelace  
 Janis and David Lundin /'83  
 Stuart and Hannelore Mabon  
 Cynthia and Alan Macy /'83  
 Dr.\* and Mrs. Charles H. Markham  
 Conni Mattingly '81  
 Marilyn and Richard Mazess  
 Susan and Rick McFarland  
 Norah and Bob McMeeking  
 Kay McMillan  
 Mr. and Mrs. Steven C. Mendell '63  
 Eleanor and Richard Miguez '64/'66  
 Joan and William Murdoch  
 Audra and Jeff Nathanson  
 Sheri and Jack Neely  
 Suzanne and Stephen Neushul /'85, '88  
 Sandi and William Nicholson  
 Betty Ordung  
 Carmen Ortiz  
 Katherine and Paul Page  
 Christine Stone-Payne and Thomas Payne  
 Jean Pettitt  
 Joseph Phillips  
 Eleanor Precoda



Scientists in action at the Sedgwick Reserve



Wendy V.C. Purcell and Kenneth L. Wilton '84  
 Maria Raso and Thomas Umenhofer '86  
 Roxanne and Byron Reeves  
 Lilli Rey  
 Bicky and Steve Rippe /'71  
 Karen and Ron Roenicke  
 Eileen and Walter Romanowski  
 Paul '92 and Susan Sams  
 Rita and Thierry Sanglerat  
 Susan and Daniel Semegen  
 James Seruto '99  
 Stanley K. and Betty W. Sheinbaum  
 Terry and Barton Shigemura  
 Stephanie and James Sokolove  
 Carole Lebbin-Spector and Phillip Spector /'72  
 Marianne and Norman Sprague /'69  
 Mr. and Mrs. Robert J. Stoll, Jr. '66  
 Jody and Paul Sweet /'69  
 Dr. and Mrs. Robert M. Talley H '99  
 Alyce and Gary Tanouye  
 Sherryl and Anthony Taylor  
 Daphne and Greg Tebbe  
 Mrs. Jeanne C. Thayer  
 Mr. and Mrs. William Thormahlen '77,  
 The William J. Thormahlen Family  
 Diane and David Toole '77/'77  
 Nathalie Tournier  
 Dr. and Mrs. Daniel Vapnek  
 Charu and Ram Venkataraman  
 Suzanne Vierling and Jon Anton  
 Marsha and William Wayne  
 Bernice and Louis Weider  
 Michael Weiss '00  
 Mr. and Mrs. Craig Williams  
 June and Knox Williams '59  
 Jane Woodward '80  
 Cristina Barbosa and Michael Young /'97  
 Katherine and Steven D. Zelko /'81  
 Michael and Diane Ziering '78  
 Zanna and Richard Zulch /'82

**YOUNG ALUMNI CHANCELLOR'S COUNCIL ASSOCIATES**  
**\$5,000 TO \$12,499**

Barbara Warren '08  
 Neil Dipaola '06  
 Ryan Hechinger '07  
 Valerie and Blaine Lando /'09  
 Jessica Porter Abate '07, '11

**CHANCELLOR'S COUNCIL**  
**\$1,000 TO \$9,999**

Anonymous (18)  
 Kristin and Robert Abbott  
 Barbara and Stephen Abbott '65/'65  
 Donna and Eric Abrahamson /'83  
 Raydean M. Acevedo '73, '75  
 Angela and Peter Ackley  
 James Acos '72  
 Antoinette Adams  
 Peter Adams  
 Rhonda Adawi '87  
 Dennis Adderton '92  
 Lynda and Scott Adelson  
 Lena and David Adishian /'89  
 Bill Adler  
 Dana Aftab '85  
 Keri and Michael Aivazis  
 Gita Akbarzadeh  
 Vikki and Vedat Akdag  
 Barbara Alpert  
 Lupe and Jose Aldana  
 Susan Aldrich Wagner and William Wagner  
 Paul Alex  
 Vicki Alexander  
 Valerie and Glenn Alger  
 Barbara and Bill\* Alhouse '50/'49

Mr. and Mrs. Joseph Alibrandi  
 Olivia and Bill Allaway  
 Doral and Bruce Allen /'67  
 Dennis W. Allen '64  
 Claire and Gregory Allison  
 Roy Almond  
 Michael Alonso  
 Nathan and Linda Alvarado '82/'81  
 Lee and Paul Amick /'83  
 Jack Amon  
 Joan Amon  
 Jodi Anderson Field and Christopher Field '94  
 Christine and Donald Anderson  
 Christine and John Anderson /'83  
 Joanne and Lorin Anderson  
 Marcella Anderson  
 Mary Anderson  
 Denise and Walter Anderson  
 Ken and Beatrice Ando  
 Cynthia and Kent Andrews  
 Judy and Bruce Anticouni  
 Erik and Barbara Antonsson  
 Marc Appleton  
 Arcelia Arce '98  
 Lucy and Ralph Archuleta  
 Carin Marie Pacifico and Philip Wayne Arcuni  
 Sarah Argyropoulos  
 Kelly and Harold Armstrong  
 Whitney and Philip Arnautou /'83  
 Kathleen and Wallis Arnold  
 Rob Arnott '77  
 Chris Arth  
 Josephine and Michael Arth /'87  
 Margaret and Howard Arvey  
 Doug Asbury '82  
 Este and Kevin Asher  
 Mary and Roy Ashford  
 Laurie Ashton and Lynn Sarko  
 Barbara and Gregory Asplund /'83  
 Chris Atamian  
 Carol Atkinson '84  
 Anna Au and Yin Luu '93  
 Lisl Auf der Heidi  
 Kelly and Robert L. Avery  
 Vida Ayat  
 Jacqueline Bach-y-Rita '84, '85  
 Bitsy and Denny Bacon  
 Vickie and Robert Baehner  
 Ulla and Peter Bak  
 Stephanie Ball  
 Thomas Ball  
 Bethany Ulmer and David Bancroft '73  
 Daniele and Philip Barach  
 Sharon and Sharyar Baradaran  
 Mr. and Mrs. Jeffrey Barbakow  
 Cheryl and Jim Barber '67/'66  
 Paris and Christopher Barclay  
 Leinie Schilling Bard  
 Kristi and Jeff Barends '87  
 Susan and William Baribault  
 Becky Barieau and Billy Wathen '74  
 Andrew Barloon '80, '83  
 Laurel and Thomas Barrack  
 Susan Barreiro  
 Virginia and Darryl Barrett /'67  
 Rick Barsotti '74  
 Christine Mitchell and Ronald Bartell /'73, '75  
 Pamela and Timothy Bartley '82/  
 Cecile Bartman  
 David A. Bartman '94  
 Barbara and John Bartman  
 Remco Bartman  
 Maria and Dennis Bashline  
 Robin and Peter Baugher  
 Dinah and Jerome Baumgartner /'69  
 Thuc-Quyen Nguyen and Guillermo Bazan

Brooks Beard '91  
 Rhonda and Richard Beaumont  
 James Bechtel  
 Pamela and Dennis Beck  
 Sally Bednar '88  
 June Behrens '47  
 Lisa Bell '78, '02  
 Pamela and John Bell  
 Jill and Arnold Bellowe  
 Benjamin Bengs '96  
 David Bengston  
 Timothy Benham '91  
 Linda and Gary Bennett  
 Wendy and Joel Bennett  
 Karen and Leon Bennett  
 Martha Bennett  
 Sydney and Robert Bennion  
 Joann and Stan Benson  
 Sheryl Mazirow-Berci and Winton Berci  
 Satyaraj Berde '85  
 Michael Berger '70  
 Barry and Jo Berkus  
 Helene and Denis Berlan  
 Rod and Sharon Berle  
 Ms. Gail Berman and Mr. William Masters  
 Sheila and Ken Berman  
 Mr. George Bernard  
 Diane and Jeff Bernstein  
 Philip and Leslie Bernstein  
 Kathleen and Mark Berry /'73  
 Janet and Rex Berry  
 Richard Berry '87  
 Dorothy and James Bettinger /'69  
 Lori Bettison-Varga and Robert Varga '83  
 Austin and Virginia Beutner  
 Mary and Ronald Bevins  
 Protima Rao and Deepak Bhandarkar  
 Kum-Kum Bhavnani  
 Neena Singh and Guralp Bhuller  
 Leslie and Ashish Bhutani  
 Geraldine and Gerald Bidwell  
 Alberta Binns  
 Sue and Ed Birch /H '95  
 Tansy and Russell Birchim '78  
 Cynthia Cory and K.C. Bishop /'69  
 Kimberly and Brad Bishop '78/'78  
 Omer Blaes  
 Louis Blake-Inada '79  
 Brenda Major and James Blascovich  
 Andrea and Steven Blumenfeld  
 Richard and Deborah Bocci  
 Joseph Boisse and David Williams  
 Tom Boland  
 Lynn Bollengier '92  
 Jennifer and Terry Bommer /'69  
 Drs. Mark and Rochelle Bookspan '87  
 Larry and Marjorie Booth  
 Julie and James Borden /'82  
 Mary and Paul Boren  
 Kaydee and Dave Bork '94/'94  
 Susan and Bruce Bornhurst  
 Carol and Jay Borzi  
 Phil and Charlene Bosl '68/'69  
 Julie and Bret Botzong  
 Tricia and Tony Bourdakis  
 Susan E. Bower '81  
 Marilyn and Michael Bowers  
 Michael Bowersox  
 Susan Bowey  
 Patricia Bowhen '56  
 Janet and Mark Bowlby /'89  
 Michael Bowles  
 Bradford and Cathy Boyd  
 Kathy Boyd  
 Kathryn and Ken Bozzini  
 Donald K. Braden '68  
 Sandra Bragar and Jerome Rossen '93  
 Patricia Bragg  
 Kathleen Bransfield



**Conducting an experiment**

Merna and David Braun  
 Curtis Brewer '66, '71  
 James Brewer '92  
 Kathleen Brewster '82, '86  
 Susan and Jeff Bridges  
 Denise and Thomas Briggs  
 Karen and Peter Brill  
 Cynthia and Frederick Brinkmann '68, '76  
 Ella and Scott Brittingham  
 Karen Brockwell and Alasdair Heath  
 Nena and Kevin Brogan  
 Kevin Bromley  
 Claudia and William Brown '79  
 Carolyn and David Brown  
 Gwen Brown and Cameron Byrd '71  
 Janet Caroline Brown '83  
 Kimberly Brown '82  
 Mr. and Mrs. Ralph A. Brown  
 Hannelore and Scott Brown /'87  
 Gay and Anthony Browne  
 Suzanne Bianchi and Mark Browning  
 Carolyn and Michael Bruck /'71  
 Wendel Bruss  
 Michele and Arnold Brustin  
 Lalla and Rinaldo Brutoco  
 David Bruyette  
 Kathy and Wayne Bryan /'66, '69  
 Patty and Robert Bryant  
 Gail Sonnemann and Samuel Brylawski  
 Craig Buccola '94  
 Nancy and Thomas Buck  
 Susan and James Buckley  
 Suzanne and Peyton Bucy  
 Karen and Aaron Budgor  
 Conchita Bullicer  
 Rebecca and Ernie Bumatay /'71  
 Ethel and Clifford Bunton  
 Janet Burbank  
 Bonnie and Frank Burgess  
 Sharolyn and Terry Burkoth '65  
 Jacqueline and Warren Burks '88/'86  
 Michelle and William Barber '85/'87  
 Dina and Michael Burns /'78  
 Richard Burns  
 Linda and Eric Burrows  
 Andrew Butcher  
 Carrie and Ronald Butler  
 Robert Butler '72  
 Sherry and Todd Butler /'76, '78  
 Jack Buttery '67, '69  
 Norma and Gary Byrne  
 Lotta Bystrom  
 Jeffrey Cadieux '82  
 Thomas Cadwell  
 Ann Cady Cooper '62

James Cain  
 Michele Calbi  
 Lisa and Dana Caledonia  
 Philip Califano '85  
 David Callaghan '93  
 Vonnie and Eugene Cameron  
 Carol and Andrew Campbell  
 Carolee Campbell and Hector Elizondo '87  
 Meg and Frank Campbell  
 Jan and Randy Campbell '74  
 Paul Campbell  
 Joy Kelly and Sandy Campbell  
 Kathy and Steve Campbell '63/'63  
 Magda and Juan Campo  
 Louise and David Cannell  
 Lynne Cantlay and Robert Klein '53, '75  
 Nancy Capelle '72  
 Amanda and Philip Capin '80  
 Jan and Roger Capps  
 Julie and Paul Capritto '81/'76  
 Alison and Donald W. Carlson /'74  
 Toni and Timothy Carlton  
 Kim and Shawn Carnahan  
 Valerie and R. Mark Carney  
 Donna and Dennis Carpenter  
 Monica Carrillo  
 Barbara and Peter Carson  
 Jill and Blaine Cartwright  
 Bruno Casali  
 Christin Case  
 Susan and Claude Case  
 Virginia Castagnola-Hunter  
 Rosalie and Albert Castanon  
 Edwin and Susan Catmull  
 Nell and Rollie Cavaletto /'65  
 R.M. and William Cegelka /'92  
 Mr. Edward Cella '93  
 Melinda and Claude Centner '83  
 Grace and Kuen Chak /'86  
 Willy Chamberlin  
 Angie and James Chang  
 Kevin Chang '99  
 Shing and Sheng-Yung Chang '75/'71  
 Karen and Wen Chang  
 JoAnn and Howard Chase  
 Inell and Henry Van Chase  
 Amrik and Jaswinder Chattha  
 Annette Chavez and Greg Fountain  
 Martin Chavez, Jr.  
 Robert Chell  
 Bih-Charn and Henry Chien '77/'81  
 Donna and Joseph Childs  
 David Chin, Jr. '92  
 Helen and Jin Choi  
 Sharon and Mark Christensen  
 Barbara Christianson  
 Jennifer Christianson  
 Moon and James Chung  
 Erika and Dave Cianciulli  
 Sharles and Joseph Clark  
 Steven P. Clausen '96  
 Laurel Cleary and Mark Smith '76  
 Douglas Clifton  
 Nancybell Coe and William Burke  
 Janemarie and Timothy Cohen '76/'76  
 Kristin Coit '01  
 Berna and Patrick Colbert '75/'76  
 Shelley and Larry Coldren  
 Honorable Paul Cole and Mrs. Linda Cole '71  
 Anna and Michael Cole  
 Nancy Cole '86  
 Allison and Timothy Coleman /'76  
 Beverly and John Colgate /'69  
 Mark Collins  
 Randolph Collins  
 Vardin and Robert Collins  
 Maria and William Collins  
 Carol and Raymond Comeau

Guy and Courtney Comer '93  
 Mary and Richard Compton  
 Anne McInerney and Earl Comstock /'88  
 Sandy and Robert Comstock  
 Sharon and Steven Comstock /'74  
 Shirley and Richard Connors  
 Collie W. and Jane Close Conoley  
 Marcia and Jamie Constance /'52  
 Judy and Dan Contreras  
 Jill and Layne Contreras  
 Barbara and Josh Conviser  
 Molly Cook  
 Marni and C. Michael Cooney '73/'66  
 Craig Cooper  
 James B. Cooper and Robin Zierau-Cooper\*  
 Mr. and Mrs. Stephen E. Cooper '68/'69  
 Howard and Trudy Cooperman  
 Patricia and Michael Copley  
 Martha and Ronald Cordes  
 William Cornfield  
 Karen Grove and Julian Cortella  
 Dr. Anne Cushing and Dr. John Cotton  
 Stephanie and Paul Couchot /'84  
 Camille Farrington and Mark Courtney  
 Carol and Arthur Courville  
 Michelle and John Cowell IV '90  
 Joanne and Jeremy Cowperthwaite /'80  
 Carol and John Cowperthwaite  
 Jackie Carson and Alan Cox  
 Michael F. Coyle '88  
 Karen Bedrosian-Coyne and Theodore Coyne '91  
 Amanda Cravens  
 Joan and William Crawford  
 Terence Creighton '79  
 Grace Crickette  
 Francine and Christopher Crook  
 Lauren Cross  
 Charles and Brynn Crowe '78  
 Timothy Crowley  
 Linda and Richard Crum '62/'62  
 Heidi and Frank Cucco  
 Barbara and Gary Cunningham  
 Kit and John Curci  
 Deana and Michael Curry  
 Esther and James Curtice /'70  
 Stewart and Louisa Cushman '93/'93  
 Denise and Michael Cutbirth  
 Debra and Steve Da Re  
 Marcy and David Dagmi  
 Jamidi Daieess  
 Gary Dales '77  
 Ann Daniel  
 Bill R. Danielson '73, '75  
 Joanne and Edward Dauer  
 Barbara and Mark Daugherty  
 Barnaby Davidson  
 Jean Davidson and Robert Feinstein  
 Adele and Douglas Davis '61  
 Andrew and Adrienne Davis  
 Laura Haston and Frank Davis '83, '86, '92  
 Janet Davis and Michael Shaw '93/'93  
 John A. Davis, Jr. '82, '84  
 Laurie Davis and Wayne Stewart  
 Scott Davis '78, '82  
 Karen and Lee Dawson  
 Merrilee De Bry '70  
 Louise De Castro  
 Phyllis de Picciotto and Stan Roden  
 Carol and Charles de Sieyes  
 Bob Deacon and Jennifer Purcell Deacon  
 Laurie Deans and Joe Medjuck  
 Gene Sinsler and Patty DeDominic  
 Dagny and James Dehlsen  
 Mr. and Mrs. James G.P. Dehlsen  
 Dr. and Mrs. Steven P. DenBaars  
 Sherrie and Rick Denton /'68, '71  
 Lisa and Albert DeSanti

Larry and Phyllis DeSpain '63  
 Mari-Jo and Gary Deutschman  
 Darryll Dewan  
 Anne and James Diamond  
 Nicholas Di Domenico  
 Ann and Robert Diener '05  
 Elizabeth and Paige Digeser '96  
 Eloise Dilling  
 Leslie and Gerard Dinardo  
 Deborah and Steve Dinsmore /'71  
 Colleen and Mike Ditch  
 Karin and Luan Doan-minh  
 Diyana and Matthew Dobberteen '95/'90  
 Heidi and John Dobrott  
 Priscilla Doman '61  
 Carol Donald and James Murray '82  
 Nava and Gary Dordick  
 Joan and Gerald Doren  
 Christina and Richard Doren  
 Kathleen and James Doty '70/'71  
 Craig Dougherty  
 Marnie Hrones and Ross Dowd /'94  
 Dr. and Mrs. Jeffrey Dozier  
 Nancy and Robert Drake  
 Monica and Scott Draper '86/'87  
 Norean and Chad Dreier  
 Karel Driesen '99  
 Patricia and James F. Drinkwater /'73  
 Donna and Adrian Driscoll  
 Diane and John Dudeck  
 Daniel Duffy  
 Alexandra and Isi Dunietz  
 John Dunn  
 Melanie Dunn and Joseph Simoni '78  
 Larry and Patricia Durham  
 Steven Dylina  
 Joanna and Kenneth Dzieszinski  
 Jane Eagleton  
 Delaine Eastin '69, '71  
 Alan Ebenstein '82  
 Louise Levien and Robert Eby  
 Denise Echer  
 Marguerite and Charles Eckberg /'70  
 Laurie and Ian Eddleston  
 Ellen and David Edington  
 Mary and Lloyd Edwards '66/'71  
 Susan and Richard Edwards  
 Tracey Edwards and Morgan Hoff '74, '75/'75  
 David Ehlow '83  
 Gary and Rebecca Eldridge  
 Deirdre Elliott  
 Dr. and Mrs. Eugene Ellis  
 Nancy and Frederick Emerson  
 Linda and Doug Emery  
 Robert and Christine Emmons  
 Patricia and Thomas Ence  
 Ingrid Engle  
 Sharyn Enquist  
 Marcia and Gordon Epstein '77  
 Lois and Robert Erburu  
 Cinda and Donnelley Erdman  
 Arlette and Alain Erdozaincy  
 Irene Erdtsieck  
 Gary E. Erickson '63  
 Susan Erickson and Thomas Berg  
 Josaphine and Robert Erlach /'82  
 Pamela Erner-Darling and John Darling /'76  
 Pourn Etezadi  
 John Eugster '85  
 Nancy and Kenneth Evans /'70  
 Catherine and Leland Evans /'76  
 Doris and Tom Everhart  
 Mary and Ray Evert  
 Dorothy and Andrew G. Ewing, Jr. '71/'72  
 Mabel and Robert Fabela /'87  
 Lisa Fabian

Lori and Joseph Fabris  
 Nancy and Ken Fahn /'80  
 Melinda and Thomas Fallgatter /'69  
 Karen and Zack Faqih  
 Caroline and Anthony Farwell  
 Suzanne Faulkner  
 Leni Fe Bland  
 Deborah Feinerman  
 Carol and Douglas Fell '64/'63  
 Stacey and Ryan Fell '94/'94  
 Nohemi and Frank Ferguson  
 Melissa Fernandez  
 Sharon and Al Ferrer  
 Betty and Gino\* Filippin  
 Kim and Joseph Finegold  
 David Finkel  
 Laurie and Robert Fiori '92/'92  
 Amy and Eric Fishburn  
 Pat and James Fisher  
 Kris and Marc Fisher  
 Dr. and Mrs. Michael Fisher  
 Vasanti and Joel Fithian '60  
 Carolyn and James Flanigan  
 Dorothy and Stanley Flaster  
 Guillermo Fleites '82  
 Mark Bailey  
 Sharon and Theodore Flint  
 Catherine Flores and Tony Tarango '94  
 Monica Florian  
 Nancy Simon and David Florimbi  
 Ann and John Flynn  
 Dr. and Mrs. John M. Foley  
 Debbie and Timothy Foley  
 Margaret and James Foltz  
 Catherine Foote  
 Dr. William F. Foran and Mrs. Vivien F. Stanley-Foran  
 Anabel Ford and Michael Glassow '74, '76, '81  
 Ariel and Durand Ford '92  
 Isabella and Roger Ford /'91  
 Silas M. Ford  
 David and Linda Forman '66/'67  
 Martin and Julia Fornage /'01, '03  
 Patricia and Dennis Forster  
 Pamela and John Foster  
 Elisabeth Fowler  
 Carole and Ronald Fox  
 Connie and Michael Framberger  
 James Frank  
 Emily and Cary Franklin /'75  
 Donald Franklin  
 Robin and Dennis Franks  
 Miri and Howard Frantz  
 Linda and Michael Frawley  
 Mr. and Mrs. Donald Fredericksen '52/'51  
 Kathy and R. Bradley Frederickson /'81



On stage at commencement





### Participating in the Education Abroad Program

Dr. Roger A. Freedman and Ms. Caroline Robillard  
 Rosemary Arnold and Elizabeth French '78  
 Ardyth and Samuel Freshman  
 Julianna Friedman  
 Cheryl and Steven Friesen '84  
 Janet and Richard Frockt '90  
 Jill and Leonard Fromer  
 Joanne and Stephen Fu  
 Ms. Dena Louise Fuentes '84  
 Dr. and Mrs. Richard Fulton  
 Vicky and Eric Fuhs '87  
 Deborah and Stuart Fuss  
 John and Martha Gabbert  
 Elizabeth and Lee Gabler '77  
 Elizabeth and Robert Gabon '95  
 Frances and Richard A. Gadbois III '79  
 Jeanne Gahagan  
 Steven Gaines and Peggy Lubchenco  
 Teresa and Nelson Galicinao  
 Kathleen and Joseph Gallagher  
 Rebecca and Brendan Gallaher  
 Christina and Marcos Gallardo  
 Deborah and Carl Gans\* '73/'72  
 Carole and John Garand  
 Mr. and Mrs. Ralph Garcia, Jr. '83/'85  
 Van H. and Virginia A. Garner '67/'67  
 Sarah Shoff and Ryan Garver '05/'04, '06  
 Thomas Gaye '75, '77  
 Mr. and Mrs. William D. Geiger III '81  
 Lynda and Chris Geith  
 Bonnie and William Geivett '87/'88  
 Elizabeth and Joseph Gelinas  
 Barry M. Gellert '78  
 Lori Gentry  
 Nancy and Dan George  
 Rebecca Voelkel and Maggie George  
 Mr. John E. Gerngross, Jr. '82  
 Anne Ready and David L. Gersh  
 Marianne and Paul Gertman  
 Betty Gester  
 Kenneth Gester '84  
 Judith and Ernest Getto  
 Pat Mahony and Randy Getz '73/'73  
 Marilyn Gevirtz H '96  
 Gregory Geyer '94  
 Douglas Geysler  
 Genevieve and Lew Geysler  
 Mary and Dennis Ghan '74/'74  
 John and Vi Gianaras  
 Veronica and Jon Gianulias '90  
 Ms. Carol Gibbons  
 Blaine Gibson  
 Patricia and David Gibson '65, '84  
 Kathy and Stephen Gibson '74  
 Dr. Wesley Gibson  
 Jennifer and Paul Gifford '83  
 Ilse and John Gilbert

Susan and David Gill  
 Ursula and Bradford Ginder '99, '03/'70, '71  
 Katherine Sharem and David Giovannoni  
 Mark Gittler  
 Patricia and David Giuliani '68  
 Kimberly and Tyler Glenn '64  
 Linda and Frederick Gluck  
 Cheryl and Michael Goldberg  
 Bonnie Goldfarb '82  
 Alicia Saver Goldsmith '82  
 Maxim Golts  
 Tammy and Martin Gonzalez  
 Lois and Frank\* Goodall '48/'51  
 Michael and Fiona Goodchild  
 Erlene and Dexter Goodell '61, '87/'61  
 Karen Goodman  
 Melinda and Marvin Goodman  
 Rush Goodman '79  
 Drs. Linda and Arnold Gorin  
 Casey Gorman '85  
 Denise Gosnell  
 Frank and Tricia Goss  
 Trevor Gotsman  
 John Gould '86  
 Kristiina and Daniel Goyette  
 Nina and William Graham  
 Annette and Geoffrey Grant  
 Mr. and Mrs. Richard A. Grant, Jr.  
 Lea and Robert Grantham '75  
 Curtis and Sondra Graver '85  
 Mr. Jeffrey W. Graver '93  
 Jo Swanda and Paul Graziano  
 Dr. Laura L. Butcher and Dr. Henry T. Greely  
 Anita Green  
 April Green  
 Christie Green '81  
 Ruth and David Green  
 Dr. Judith L. Green  
 Maryann Green  
 Lola and Walter Green  
 Albert Greenberg  
 Joyce Greene  
 Glenn Gregory '73  
 Gary and Julie Greinke  
 Dinah Griego '08  
 Lisa Grier  
 Gail and Michael Griesmer '76  
 Steve Gross  
 Marc Grossman and Mildred Patterson '73  
 Catherine and James Grotelueschen '72  
 Peter Grubstein  
 Toni and Thomas Guckert '79/'79  
 Margie and David Guggenheimer  
 Paul Guido and Stephen Blain  
 Richard and Mimi Gunner '62  
 Katherine and Daniel Gunther  
 Lois and Richard Gunther

John Gustafson  
 Rosa and Ricardo Guzman  
 Donny Ha  
 Norman and Jane Habermann  
 Ruthann Haffke '89  
 Ann Hagerty  
 Lyn and Dale Haithcock  
 Astrid and Hudson Hale  
 Rene and Norman Hale '71  
 Dr. Lynne P. Hall '63  
 Eva and Yoel Haller  
 Victoria Halliday and Bruce Badash '80  
 Beatrice Hallig  
 Heidi Denzler-Halsey  
 Michelle and Glenn Halstead '78  
 Lea Halterman  
 Dr. and Mrs. Rodman S. Hamer  
 Janice and Stephen Hamill  
 Cathy Hamilton  
 Judith Hamilton and Charles Nicholson  
 Margaret and Donald\* Hamister '70  
 Greta Hamm  
 Ann and Donald Hamman '79/'77  
 Phil Han  
 Robin Hanifin '73  
 Jeannette and Ronald Hanni  
 Dr. Helen Hansma  
 Ryan Hardy '00  
 Dr. and Mrs. Norris G. Haring  
 Jacqueline and Christopher Harkins '84/'84  
 Barbara and Tom Harold  
 Simone and Laurentius Harrer  
 Dr. and Mrs. Fred James Harris '68  
 William and Christy Hart '75  
 Ruth and Gerald Harter  
 James Hartle  
 Mr. and Mrs. Paul W. Hartloff, Jr.  
 Jeffrey Hartman '81  
 Mike Hartunian '48  
 Kay Hartzell '70  
 Linda and Douglas Harvey  
 Mary Harvey  
 Paula and Dennis Harvey  
 Carol Hastings and Michael Michaud  
 Camille Billops and James Hatch  
 Melinda Hatt '77  
 Nancy Haug  
 Judy and W. Roger Haughton '70/'69  
 Jennifer Hawkins '91  
 Robert Michael Hayes  
 Valerie and Yuval Hazon  
 Mrs. Linda L. Hedgepeth  
 Karen and Barrett Hagerle  
 Jo Helen and Grant Heiken '70/'72  
 Maren Henderson  
 Kathryn Henkens  
 Faith and Melvin Henkin  
 Laura and Thomas Hensler  
 Preston Hensley '67, '69  
 Susan and Robert Herrera '80  
 Maria Herrera-Sobek and Joseph Sobek  
 Cecilia and Milton Hess  
 Neil Hewko '01  
 Linda and Steven Hicks '71/'70  
 James Hildebrand '79  
 Lynn and Richard Hillebrecht  
 Lisa and Daniel Hillman '77  
 Christine and Mark Hilton '81  
 Mr. and Mrs. John A. Hinman, III '71  
 Jerry Ho  
 Dr. and Mrs. F.G. Hochberg, Jr. '65, '71  
 Niema Bassig and Kirby Hock '94  
 Nancy Hofbauer  
 Marc Hoffman  
 Sandra Hoffman  
 Dr. Gerhart Hoffmeister  
 Mrs. Margaret Hoffmeister  
 Joanne C. Holderman  
 Erin and Tim Holl '95/'95  
 Mrs. C. Warren Hollister  
 Cathryn and Steve Holoien  
 Roslyn and David Holtzclaw  
 Lynn and Gary Hom  
 Laurie and Felix Hon  
 Donna and Daniel Hone  
 Michael Honer '81, '91  
 Anne and David Honeycutt  
 Susan and Bob Hoover  
 Susan and Robert Hooy  
 Linda Cipriani and Gary Horning  
 Dr. and Mrs. Gary T. Horowitz  
 Michael Horst '67  
 Barbara Horta e Costa  
 Deborah Baly and Richard Horuk  
 Jeanette and William Hosek '64, '67  
 Maurine and Preston Hotchkis  
 Jena and Jamshid Homan  
 Eleanor and Maxwell Hovaten '69  
 Kathryn and Doug Howe  
 Linda Howell  
 Dr. and Mrs. Davor Hrovat  
 Linda and Gary Hsu  
 Jennifer and Michael Hubbert  
 David Huenneke '79  
 Heidi and David Huff '89/'89  
 Magy and Jonathan Hughes  
 Christopher Scott Hulbard  
 Dr. and Mrs. R. Stephen Humphreys  
 William Huo  
 Ronald Hurd '76  
 Blanca and Alejandro Hurtado  
 Loyd and Ward Hutchins  
 John Hutchinson  
 Andrew and Doreen Hutton '83  
 Andrea and Richard Hutton  
 Gloria and Willard Huyck  
 Lisa Feuchtbaum and Jim Hynes  
 Karen and Edward Iantuono '89  
 Valerie and Hans Imhof '64  
 Bethany and Marco Innocenti '02/'99  
 Shari and George Isaac  
 Maria and Anacleto Isaguirre  
 Martin Isenberg  
 Nicola Ivanovic '95  
 Debra and Charles Ivons  
 Gordon Jackson '57  
 Victoria Jackson and Bill Guthy  
 Hollye and Jeffrey Jacobs  
 Jerri and Thomas Jacobs  
 Sara and John Jacobsen '86  
 Madeline and Peter Jacobson  
 Anne and Thomas Jagodits '91/'90  
 Susan C. Jangochian '63, '81  
 Dr. and Mrs. Joseph J. Jankiewicz  
 Mrs. Gina Laun and Mr. Joseph Jannotta, Jr.  
 AnnKatrin Petersen and Roberto Jappelli  
 Guity Javid  
 Susan and Steven Jayich  
 Mary and Jed Jelincic '82/'82  
 Ms. Holly P. Jennings  
 Linda and Ross Jennings '72/'72  
 Heidi Jensen '87  
 Heather and Tom Jevens '88/'87  
 Soni and Moti Jiandani  
 Ann Johnson '67  
 E. Lyle Johnson, III '91  
 Joan and Kenneth Johnson  
 Lisa and Scott Johnson  
 Ellen and Peter Johnson  
 Sharyn Johnson  
 Cynthia and Evan Jones  
 Lisa and Gary Jones  
 Mr. and Mrs. Peter C. Jordano H '03  
 Christine and Richard Jorgensen '86  
 Louisa Judge  
 E '68 and Eric Juline  
 Mr. and Mrs. Robert Jupille '89  
 Robert and Pamela Kahan '66

Ms. Sandy M. Kaneoka and Mr. C. Thomas Hopkins '91  
Christine and Jordan Kaplan /'83  
Margaret and Lee Kaplan '82/'82  
Lynn and Roger Karlson  
Kenneth Karmiole '68  
Martha and Peter Karoff  
Elyse and John Karow '86/'86  
Leah and Peter Karp /'87  
Eiji Kasahara  
Stephen and Lauren Katz  
Joanne Moran and Mitchell Kauffman /'77  
Lynne and Ron Kaufman /'71  
Irene and Robert Kavanaugh /'61  
Mr. Herbert C. Kay  
Elizabeth Keate and Mark Kandola '92  
Deborah and John Keever '67/'67  
Gina and Mark Keller  
Susan Keller and Myron Shapero '85  
Dorcas Kelley '84  
Madge Kelley '81  
Robert Kelley  
Julie and Jamie Kellner  
Cheryl and Kevin Kelly  
Elizabeth Dalrymple and John Kelson  
Nancy and Bryan Kemnitzer  
Margaret and Barry Kemp  
Suzanne and Kurt Jagggers '84  
Sherry Hope-Kennedy and Jonathan Kennedy  
Mr. Michael Kennedy '78  
Connie and Richard Kennelly  
Diana and James Kennett  
Alfred Kenrick, Jr. '80  
Michael Kent '84  
Lisa and Fred Kephart /'89  
Willem Kernkamp  
Karl Kersten  
Linda and Michael Keston  
Donna and Kenneth Keyes  
Renee and Richard Kezirian /'66  
Dr. Hassan Khalil  
Carolyn and Matthew Khourie  
Dr. and Mrs. Wayne R. Kidder  
Judith and George Kieffer /'69  
Jane Kievit  
Cecilia Kikalo  
Linda Kim  
Teresa and Charles Kimbell  
Laura and Benjamin King /'94  
Gregory P. King '76, '80  
Joan King '88  
Mark Kinoshita '90  
Kristin Kirby and Kevin Whelan  
Ann Kisich  
Linda and Bill Kitchen  
Barry and Jill Kitnick  
Debra and Bruce Kittrick  
Kyoko and Takashi Kiuchi  
Lorna Siepser and Steve Klebe  
Sherri and Daniel Kleeburg /'86  
Genni Klein '68  
Mary and Gerald Klein  
Theresa and Peter Klein  
Lori and Kenneth Kletzer  
James and Janice Knight  
Lisa and Thierry Koblentz  
Kristen Koch  
Mark and Carolyn Koenig  
Jessie Kohler '92  
Robert Kohn  
Drs. Petar and Anna Kokotovic  
Louise and Stephen Komp '63, '68  
Barbara Pawlowski and Marek Konopnicki  
Mary and James Koons  
Darcy and Richard Kopcho '78/'77  
Larry Koppelman and Nancy Walker-Koppelman  
Steven and Lisa Koppenjan '86, '89/'01

Michael Kossman '86  
Carol Kosterka '67  
Kimberly Kotnik '92  
Karen and Roger Kovach '87  
Jaclyn Fabre and David Kramer  
Robert Kramer  
Susan and Brent Krantz /'81  
Jane Kennedy and Bruce Krawisz  
Charles Kresge '79  
Fred and Margie Kriebel  
Kerry Ann Krisher '81  
Catharine and John Kristian  
Carol Krogstad  
Kurt and Sandy Kruger '82/'82  
Deborah Kruse  
Janet and Alan Krusi /'77  
Donna and Steve Kuriyama  
Catherine and Ron Kurstin  
Kathleen and Craig Kuziel /'77  
Landy Lee and Edward Kwang /'86  
Christina Labrie '96  
Dale and Dennis Lachtman  
Laurie and Dennis Laduzinsky /'85  
Wendy Foster and Pierre LaFond  
Clara Lai  
Richard and Peggy Lamb /'72, '87  
Sherry and Robert Lamont  
Alicia Lancashire  
Rebecca and Chad Lande  
Margarita and Charles Lande  
Zoe Landers  
Richard Lane '73, '89  
Elly and Jim Langer  
Julie and Steven Langley /'76  
Gordon Langstaff '73  
Claudia Lapin  
Beverlie and Ronald Latimer  
Cherie Briggs and John Latto  
Sue Jane and Douglas Lau  
Marcia and Chris Lawler  
Robert and Ellen Lawson '60/'59, '61  
Mary and Gary Leal  
Richard Leamon  
Robert and Patricia Leamy  
R. Marilyn Lee and Harvey Schneider '69  
Donna and Dan Lee  
Kwan Lee  
Toffee and Sam Leftwich  
David Lehr '90  
Michael Lehtola '86  
Ira Leifer  
Ann and James Lemke /'66  
Cathy and Gerald Lemonnier  
Susan and Anders Lentz  
Susan and Donald Lenz  
Petra Lenz and Daniel Hartline '80, '83  
Karen and Lorin Letendre /'68, '69  
Lubella and Carlos Levi  
Ilan and Barbara Levi  
Ms. Susan Levin  
Robin Levine '98  
Amy Levy  
Ms. Martha J. Levy  
Cheryl and Steven Lewis '96  
Yifeng Zhang and Ning Li /'91  
James Lichter '86  
Janet and Bradley Lieber  
John Liebes  
Christine C. Wong and Jeffrey T. Light  
Meta and Dan Lightfoot  
David Lihani  
Denise and George Lilly  
Julian Lim  
James Lima '87  
Eileen and Christopher Lincoln /'84  
Nahid Khazenie and Mike Linda  
Carl and Jo Lindros  
Mark D. Linehan '85  
Elaine and Robert Lingard  
Jane and Don Lipkin '95/'96  
John Lippert '83

Mrs. Jan Percival-Lipscomb and Mr. Jeffrey L. Lipscomb /'76  
David Litschel  
Dodie Little  
Newton Liu  
Susan and Paul Liu '84/'86  
Yuan Liu '81, '85  
Renee and Craig Livingston '82/'82  
Shobna Lochan  
Mr. James F. Lodas '65  
Janet and Jeffrey Loeb  
Heather and Ken Logan /'96  
Angelina Loomis  
Drs. Donileen Loseke and Spencer Cahill '82  
Robert and Barbara Lowes  
Michael and Diane Lowry '66  
William Lu  
Gene and Susan Lucas '73/'73  
Amy and Jeffrey Ludwig  
Anita and Paul Lui  
Mr. Keith Lupton '90  
Eli and Leatrice Luria  
Sandra Lynne  
Huamin Ma '89, '93  
Paula Sanders and Michael Maas  
Diana and Ralph MacFarlane '87  
Joseph Costello and Lynn Mack-Costello  
Deborah and John Mackall '79, '86  
Lomena and Colm Macken  
Catherine and Matthew MacLean '85/'84  
Caroline Street Maddock and Thomas Maddock '61  
Catherine Fonseca de Madrid and Miguel Madrid  
Marilyn Magid  
Marilou and James Magistro  
Kevin and Deean Mahoney '95/'95  
Kevin Mahoney '95  
Susan and John Maitino  
John Majewski and Lisa Jacobson  
Montaha Wafai and Ali Malaikah '89  
Martha and Timothy Malone /'75  
James Maloney and Andrew Nance '84  
Melvyn and Marilyn Manalis  
Barbara and Francesco Mancia /'80  
Sherri Mandell  
Rita and Gurinder Mann  
Kathalyn Mann  
Stephanie and Steven Marasciullo '84/'77  
Suzanne Marciano-Runge  
Risty and John Marckx /'93  
Ms. Janie S. Marcus '76  
Kathy and Garo Mardirossian  
Edward Marez '80  
Jaime and Cynthia Marian

Tracy and Allen Marks  
Linda and Gregory Marks  
Bernadette and Timothy Marquez  
Siri and Robert Marshall  
David Martin  
Josie and Ed Martin  
Marna and Mark Martin  
Maria and Rufino Martin  
Vicki Martin  
Frances and Angel Martinez  
Jean and John Martinis  
Patricia and Philip Martzen /'73, '78  
Eryn and Marcello Mastrocola  
Mrs. Margaret Mateer-Isaacs and Mr. Craig L. Isaacs '84/'84  
Jean and George Matthaie  
Virginia and Brett Matthews  
Kristin and David Mattingly  
Alix and Mark Mattingly /'78  
Dr. and Mrs. James M. Mattinson '66/'64  
Ruth and John Matuszeski  
Hilary and Bayard Maybank  
Deloris and Sandor Mayuga / '70  
Claudia and John Mazurkiewicz /'73  
Monica and William McAllister '74  
Nora and Edward McAniff  
Bruce McBride '76  
Cynthia McCabe  
Miren Letemendia and Darryl McCall /'78  
Honorable Kevin McCarthy and David Bui '81  
Linda and Jack McCowan /'70  
Nancy and James McCrary /'90  
Nancy and Jeffrey McCune  
Mrs. Beverly A. McCurdy '58  
James and Margaret McDermott  
Carol and Lon McEachern '84/'80  
Natalie and Bruce McFadden  
Marni and J. Sears McGee  
Sheila and Frank McGinity  
Donna Christine and Michael McGuire  
Diana and Bruce McHugh  
Laura McHugh '89  
Mrs. Anne McInnis '69  
Amanda and James McIntyre  
Kathryn D. McKee '59  
Mr. and Mrs. Michael J. McKenzie '78  
Nancy McLaren-Salsig '73  
Margaret and James McLaughlin /'85  
Laurie and Steve McLennan  
John McMahon  
Gloria and John McManus  
Kimberly and John McMorro  
Mark McMorro '82  
Marilynn and James McNamara '82/'85  
Brenda and Michael McNamara /'65  
Mr. and Mrs. B. Ross McNeil '88  
Marie and Brent McQueen /'90



*Examining specimens for study*



Lisa and Dan McQueen  
 Susan and Brian Meath '85/'84  
 Patricia and Bruce Meikle /'76  
 Carol and Howard Melamed  
 Ronnie Mellen  
 Professor and Mrs. Duncan Mellichamp  
 H '09/MA '70  
 Laini and Peter Melnick  
 Suzi and J.G. Melton  
 Marilyn and Lyndel Melton  
 Mael and Sophia Melvin  
 Nancy and John Mendonca  
 Brenda Mendoza  
 Randall and Gail Ment  
 Karen and Paul Menzel  
 Marian and Anthony Meola  
 Alexandra Meshkov '79,'83  
 David Mesna  
 Judith and David Messick '71, '82  
 Honorable Sharon Mettler and Mr.  
 Steven Mettler  
 Kathleen and Bruce Micheel /'70  
 Myrna Midani Moore  
 Janice and Dale Migliaccio  
 Judy Stern and Dan Mihalovich  
 Lori and Lee Mikles  
 Simon Milbert  
 Anne and Hale Milgrim '87  
 Christine and Mark Miller  
 Sharyne and Gene Miller  
 Cheryl and Kenneth Miller /'75, '77  
 Lisa Miller  
 Loren and Sarah Miller '85  
 Marlin and Ginger Miller  
 Veronica and Michael Miller  
 Stephen Miller  
 Gayle Miller-Janton and Jay Janton  
 '80/'80  
 Karen and William Milne  
 Marion and Burt Minor '80  
 Lori Misicka and Kenneth Cooper  
 Glen H. Mitchel, Jr.  
 Lois and Mark Mitchell  
 Mary and Thomas Mitts  
 Mr. and Mrs. Arnold Miyamoto '82  
 Holly Moe  
 Eric Moelter  
 Steven Mogavero '86  
 Wendy Wittl and Gregory Mohr '82/'76  
 Elise and Alexander Moir '84/'84  
 Kelly Monahan '79  
 Melissa Monahan  
 Dorothee and Daniel Moncino  
 Dr. William Monte '80, '83  
 Gene Montesano  
 Dr. Mark Montgomery  
 Valerie and Robert Montgomery  
 Laurene and Scott Montgomery  
 Alicia and Brett Moore  
 Elaine and Chester Moore /'64  
 Donald Moore '84  
 Jerilyn and Joseph Moore  
 Matthew Moore  
 Robert Morefield  
 Teresa Dekalb and Randal Morgan  
 Barbara Morgan-Zaney '83  
 Tamara and Richard Morgenstern  
 Mary and James Morouse  
 Chris and Ann Morrison  
 Ellen and Mark Moss  
 Herman Warsh\* and Maryanne Mott  
 Anna Motyka  
 Kenneth Moure and Sara Norguay  
 Mr. Sam Mudie and Ms. Patricia Glaser  
 Tami and Tim Mulcahy  
 Dr. Jane Mulfinger and Mr. Graham  
 Budgett  
 Renata and William Mullen  
 Merle and Peter Mullin /'62  
 Laura Mulroy and Sean Gallagher

Arcelia Muniz  
 Wallace Murdoch '93  
 Veronica and Dennis Murphy  
 Quynh and James Murphy  
 Marie and Paul Murphy '89/'88  
 Nori Muster '78  
 Victoria and Barton Myers  
 Mr.\* and Mrs. Raymond K. Myerson  
 Deborah Myman  
 Julia and Mitchell Nadler '94/'94  
 Myra and Spencer Nadler  
 Virginia and Robert Naeve  
 Jeannie Nakano '71  
 Mr. John M. Nakata '78  
 Marguerite Bouraad-Nash and Keir Nash  
 Eileen and William Nasif  
 Charles Nasser '77  
 Julie Naworski  
 Janet Offel and Michael Nebenzahl '78  
 Penelope and Noel Nellis '64  
 Janine and Marshall Nelson /'66  
 Ellen and Jack Nelson  
 Julie Nelson  
 Shaynah Neshama  
 Lorie and David Neste  
 Gary Nett  
 Karen and Ronald Neuhoff '59/'62  
 Sheila and Farley Neuman  
 Nanette and Henry Nevins /'72  
 Barbara and Dan Newkirk  
 Holly and Gary Newman '92  
 Margaret and Mark Newman /'77  
 Pat Newton  
 Uyen and David Nguyen  
 Hanh Nguyen and Dao Doan  
 Mrs. Barbara R. Nida '61  
 Anneliott Willis and James Nida  
 Jeannine and Robert Nida '60/'62  
 Susan and Eric Nielsen  
 Lisa and Jim Nigro /'83  
 Cary Nishimoto  
 Dale and Mike Nissenson  
 Alicia Nogales and Greg Little '92  
 Elizabeth and Michael Noling  
 Catherine and Thomas Nollner  
 James Norris  
 Edward Norton, Jr.  
 Victoria Nourafchan and David  
 Rosenstein '81  
 Susan Nunn '81  
 Margie and Gary Nussbaum /'83  
 Nancy and Kevin O'Connor  
 Paula and Jonathan Oakes '88/'89  
 Claudia and Louis Obertreis /'72  
 Steve O'Brien  
 Robert O'Day  
 Julie and Robert Odette  
 Mr. and Mrs. Donald D. O'Dowd  
 Roberta and Henry\* Offen /'78  
 Barbara Offerman  
 Otieno Okatch '92  
 Holly and Allen Oliphant  
 Suzanne and Melvin Oliver  
 Melinda and Larry Oliver  
 Christina and Richard Olmedo  
 Amy Olmstead-Allen '84  
 Lee Ann Yasukawa and Gregory Olsen  
 '84/'84, '86  
 Una Somerville and Scott Olsson  
 Caroline O'Malley '94  
 Mary and Steve Oparowski  
 Annette and Charles J. Orella /'80  
 Gail Orens  
 Monica Orozco '91, '93  
 Gail Osherenko and Oran Young  
 Jan and Edmund Osterdorf  
 Angela Ovale '91  
 Leanne and Caleb Overton  
 Gregory and Sandra Owen  
 Lina Arbelia-Paden and Bradley Paden



**Working together in a campus lab**

Julie and Robert Padilla  
 Kathleen and Ralph Paige '71/'70, '72  
 Suzanne and Michael Palmer  
 Christine Palotay '72  
 George Pao  
 Robert Paris  
 Robin and Bradley Parker /'78  
 David Parker  
 Karen and Russell Parker  
 Trent Parker '91  
 Jim Parrott  
 Deborah Patterson '74, '78  
 Mary and Norm Pattiz  
 Lindene and Scott Patton  
 Kathryn Paul and Mike Passmore '68  
 Priscilla and Stanton Peale  
 Lynn and Mel Pearl  
 Abe and Suzanne Peck  
 Lindsay Penkower '01  
 Constance Penley  
 Colleen and Christopher Pennell /'90  
 Ann and Johnny Perez  
 Lisa and Chris Perrella  
 Christine Perry  
 Jo Anne and Thomas Perry '72, '82  
 John Perry  
 Garie and Kenneth Perry  
 Stephanie and Eliot Peters '01/'00  
 Joy Dittberner and Thomas Peters  
 '76/'73  
 Mark Peyrot '70  
 Mary Pham and Keith Low  
 Kimberly Phillips  
 Christina and David Phreaner '90/'89  
 Nanette and Ken Pigaga  
 Sarah Pillsbury  
 Nola and Philip Pincus  
 Mr. John D. Pinkel '85  
 Ann and Michael Pless  
 Elizabeth and Richard Plume  
 Elizabeth and Peter Popoff /'70  
 Lori and Gregory Porter '81  
 Lorie and Michael Porter  
 Earl Potter  
 Virginia and Patrick Povah  
 Mei Lin Yeoll and Keith Prater  
 Vicki Prentice Rubin and Al Rubin '77, '80  
 Geoffrey Price '90  
 Sandra Price and Paul Otellini '74  
 Dr. George Primbs '51  
 Ellen and Keith Pritsker /'74, '75  
 Julie and Chris Proctor  
 Julie Ann Higbee and Michael Proulx  
 '97/'95, '00  
 Lisa and Greg Provenzano /'83  
 Dr. Harold Pruett '60  
 Jach Pursel and Enrique Dominguez

Laura and James Putnam '71/'71  
 Steven Pybrum  
 Helen and Russell Pyne  
 Joanna Pyper and Richard Wormsbecher  
 '79/'79  
 Robin Quigley  
 Marion and Michael Quinn  
 Karen Quinones '84  
 Sal Quintanilla  
 Winchell Quock  
 Heidi and John Rabel  
 Patricia Rachlin  
 Sally and Christopher Radich /'81  
 Robert Radin  
 Susan Van Atta and Kenneth Radtkey  
 '77/'83  
 Mr. and Mrs. Robert L. Raede, Jr. '80/'80  
 Louise and Monte Ragland /'76  
 Latha and Chulanur Ramakrishnan /'78  
 Nathaniel Ramer  
 Adriana and Carlos Ramirez  
 Elizabeth and Richard Randolph /'70  
 Ruth and Michael Rasser  
 Liza Rassner  
 Lori and David Rauterkus  
 Varadarajan Ravindran '84  
 Mr. Joel S. Raznick '81  
 Dr. Cathy Costin and Mr. Mitchell Reback  
 Belinda and Guy Redington /'72  
 Richard Redoglia and Diana Ashton  
 '80/'80  
 Michael Reed  
 Diane and Terry Reed  
 Patricia Ramos-Reede and Marc Reede  
 Sandra and Harry Reese  
 Lisa Reich and Bob Johnson  
 Kathy and O. Lee Reid, Jr. /'64, '66  
 Stephanie and Dennis Reilly /'70  
 Roland Reinhart  
 Melissa and Nathaniel Reish '96, '99  
 Mr. and Mrs. Lynn P. Reitnouer '55/'54  
 Stacey and Greg Renker  
 Joan Pascal and Ted Rhodes  
 Ilka and Jody Rice  
 Nancy and Douglas Richards  
 Dr. Leslie Hogan and Mr. John Rickey  
 Dr. Lucille Ridgill  
 Muriel and John Ridland  
 William and Christine Riegler '85/'88  
 Christine and Stefan Riesenfeld  
 Gayle and Ken Riley '83  
 Andrea Bardakos-Riley and Matt Riley  
 '00/'99, '03  
 Verla Ring  
 Constance and William Ring  
 Dr. Donald Talbot Rink  
 Mary Beth Riordan

Victoria Riskin and David Rintels  
 Roger and Mary Ritter '69  
 Drs. Scott and Shannon Rivenes '88  
 Felipe Rivera '92  
 Deborah and Aaron Roberts  
 Brian Roberts  
 Marianne Wampler and Dar Roberts /'82  
 Bruce Robertson and Thomas Kren  
 Barbara and Ronald Robertson  
 Diane and William Robertson '65/'64  
 Alice and Leo Robin  
 Barbara and Raymond Robins  
 Larry Robinson  
 Mark Robinson  
 Scott Robinson '87  
 Lisbeth and Rick Rockhold '85  
 Staci Tenen and Glen Rocklin  
 Justine Roddick  
 Mr. and Mrs. Johnathan Rodgers  
 Ms. Rachel A. Rodgers '96  
 Anthony and Kyra Rodgers  
 Heidi and David Rogers '77, '80  
 Jean and J. Ben Rogers  
 Jonathan Rogers  
 Joseph Rogers '86  
 Robin and Nathan Rogers  
 Stephen Rogers  
 John Rogitz  
 Kathleen and Francesc Roig '94  
 Kimberlee Romanov  
 Hilde and Mike Romelfanger  
 Valerie and Gilbert Romoff /'60  
 Deirdre Roney and John Cadarette  
 Luz and Alan Roscow  
 Mr. Kenneth Rose '85  
 Deborah and Steven Rose /'70  
 Susan J. Rose and Allan Ghitteman  
 Sybil Rosen  
 Gayle and Charles Rosenberg  
 Linda and Lee Rosenberg  
 Edwin and Bobbie Rosenblatt '77  
 Eileen and Harvey Rosenblum /'70, '72  
 Rosalyn and Richard Rosin  
 Allison and Andrew Ross /'86  
 Dr. and Mrs. Ian Ross  
 Gerralee Rothbard  
 Kate and Kenneth Rotman  
 Ilene and Robert Rotstan  
 Janet Eklund-Rowley and Richard Rowley /'79  
 Raymond Rubenstein '53  
 Erica and Ron Rubenstein /'66  
 Amber Rude  
 Paula Rudolph and Mark French '81/'73  
 Mr. Arthur N. Rupe H '08  
 Alison and Geoffrey Rusack

Bruce Russell  
 Julie and George Rusznak  
 Dr. and Mrs. Richard Ryu  
 Kendra and Donald Sabino  
 Amanda and Scott Saffian  
 Alice and Douglas Safford '85/'85  
 Barbara and Anthony Safford '77  
 Nancy and Mark Samuels  
 Elizabeth Sanchez  
 Mr. Jim A. Sanchez '78  
 Alma and Salvador Sanchez  
 Diane and Robert Sandberg  
 Patrick Sanders  
 Mr. and Mrs. Bernard Sandler  
 David Sandlin  
 Janet and Ed Sands  
 William Sanson  
 Lori and Mark Santi  
 Jennifer and Roy Sasaki  
 Ned and Irene Sasaki  
 Alana and Roy Savoian /'71, '79  
 Josephine and Ken Saxon  
 Kathryn Saxton '96  
 Paul Saylor '87  
 Daniel J. Sbicca '82  
 Diane and Douglas Scalapino  
 Ethel and Howard Scar  
 Lynn Scarlett '70  
 Francis and Karen Scarpulla  
 Paul Schaefer '88  
 Marian and Mark Schallert  
 Marsha and Robert Schapper  
 Harvey and Hope Schechter '47  
 Suzanne Retzinger and Thomas Scheff '82  
 Lila and Joseph Scher  
 Mary Scherer and James Brous  
 Mr. Hugh C. Schink '94  
 Kimberly Schizas '77  
 Linda and Jeffrey Schlageter '65/'65, '67  
 Beryl Schlesenberg  
 Nancy Schlosser  
 Phyllis and Thomas Schmedake '84  
 Debbie Schmidt  
 Frederick Schmidt '87  
 Melissa and Jason Schneider /'93  
 Deborah and Jeffrey Schneider  
 Kimberly and Timothy Schnell '92  
 Alexander Schoch  
 Mithra Sheybani and William Schoenholz /'77  
 Katherine and Richard Schram  
 Lauren and Todd Schuster  
 Lisa Straton and Peter Schuyler /'76  
 Mr. and Mrs. Mark J. Schwartz '84  
 Jodi and Steven Schwartz /'91  
 Leslie Prussia and Fred Schwarzenbach /'79  
 Ronda and Richard Scoby  
 Melissa and Clifton Scott  
 Karen and Howard Scott  
 Tom Scrivener '93  
 Jodell and William Seagrave  
 Dale and Judy Seborg  
 Lilyan Cuttler and Bernad Seder  
 Maureen and Edmund Seder  
 David Seibold and Karen Myers  
 Patricia and Jim Selbert  
 Trina and Edward Semplinski  
 Cynthia and Michael Seroka /'75  
 Kalyani Gopal and Nambirajan Seshadri  
 Rita Clinton and Henry Settle /'70  
 Donna and Dana Severy  
 Marie and Michael Sexton  
 Michael Shackelford '88  
 Ayesha and Mohammed Shaikh  
 Tami and Mark Shalvarjian '87/'84  
 Julie and Bradley Shames /'77  
 Shelly Sharp  
 Irene and John Sharpe

William Shay and Valerie Yoshimura '86/'90  
 Brendan Sheehy '99  
 Ross Sheldon  
 Dr. John Shepherd '92  
 Alicia and Patrick Shepherd  
 Mark Sherman  
 Roberta and James Sherrand  
 Holly and Lanny Sherwin  
 Kathleen Shields and Merlin Davis '81  
 Dr. and Mrs. Joseph C. Shipp  
 Bradley Shoemaker '67  
 Susan and William Shoemaker  
 Candace and David Short '67/'62  
 Yu-Ting Miao and Xingyuan Shu /'95  
 Mary Jane Weigel Shugart and Steven Shugart /'80  
 Stephanie and Fred Shuman  
 Jill and Bertram Shure /'77, '78  
 Mr. and Mrs. Kent E. Sidney '88  
 Nancy Sieben Binz  
 Julie and David Siegel  
 Katherine Sierra and Donald O'Connell '76  
 Steven Silbaugh  
 Andrew Silber  
 Leigh and Todd Silva '92/'92  
 Michael Silveira '77  
 Paulette and Richard Silver  
 Judith and Lawrence Silverman  
 Mr. and Mrs. Ralph Simmonds '78  
 Steven Simmons '86  
 Gretchen and Jim Simpson '69/'69  
 Gurinder Kaur and Bhupindarpal Singh  
 Irina DeFischer and James Sinnott  
 Jeanne and Rex Sinquefield '68  
 Tracy and Michael Skylar  
 Gerald Slagter  
 Elliott Slamovich '91  
 Kenneth and Elizabeth Slaughter '79  
 Cathie and Paul Slavik  
 Laura and Philip Sliator  
 Dr. Tine Sloan  
 Patricia and Tim Smale '70/'78  
 Leanne Powers and Harry Smallenburg /'65  
 Christine Smith  
 Connie Smith  
 Angie and Craig Smith '94/'90  
 Ellen and James Smith  
 Marilyn and Jack Smith /'68  
 James Smith '94  
 Jay and Sally Smith  
 Diane and Lyle Smith  
 Susan and James Smrekar  
 Christina and Matt Snow /'92  
 Carolyn and Steven Snyder '83/'84  
 Jeffrey Snyder '85  
 Linda Snyder  
 William Snyder '89  
 Mallory and Irving Sobel  
 Jin Sook Lee and Hyongsok Soh  
 Rene and Glenn Solem  
 Jung W. Song  
 Anita and Eric Sonquist  
 Dr. and Mrs.\* John Sonquist  
 Carla Soracco  
 Toby Spangler '85  
 Kathryn and Jeffrey Speed /'84  
 Joan Speirs  
 Helene and Bill Spencer '69  
 Sara and Theodore\* Spencer  
 Linda and Andrew Spingler /'86  
 Cynthia and Eric Spivey '83/'83  
 Kibibi Springs '95  
 Carol Spungen and Aaron Lieberman  
 Dr. Partha Srinivasan '90  
 Bridget and Thomas Standing  
 Tamara and Brad Stark /'92  
 Cynthia and James Stebbins

Timothy Steck '78  
 Suzanne and John Steed  
 Thomas and Sandra Stefanuto  
 Russell Steiner  
 Cheryl and Bjorn Steinholt  
 Prudence and Robert Sternin  
 Frank and Kay Stevens '59/'62  
 Debra and Stephen Stewart  
 Laura and Robert Stewart  
 Louise Stewart and Craig Mally  
 Matthew Stewart '95  
 Linda and Paul Stich  
 Cynthia and David Stiles '72/'72  
 Nancy and Neil Stipanich  
 Deborah Stith  
 Thomas Stockton '65, '67  
 Drs. Cynthia and Michael Stohl  
 Amy Stoodly '80  
 Danelle Storm Rosati and Mario Rosati '77  
 Cathy and Bruce Straits  
 Deborah and Dwight Streit  
 Irena Handler-Strumlauf and Bruce Strumlauf  
 Sheryl Gorchow-Stuart and Marc Stuart  
 Nola Stucky '85  
 Barbara Stupay '73  
 Carolyn Suer  
 Dorothy Sully  
 The Gary Sully Family  
 Muna Al-Mousa and Tarek Sultan  
 Nancy and Ronald Surgener  
 Joyce and Larry Suter  
 Ms. Mary J. Swalley  
 Christine and Johan Swildens '92/'92  
 Debra Szecsei and Chris Bryeans '86  
 Karen Ann and Glenn Szeto  
 Christine Talbott and John Galli '74  
 Ashok and Kay Talwar  
 Jean and Paul Tanaka /'70  
 Edith and Roberto Tapia  
 Barbara and Timothy Tasker /'89  
 Heather and Jared Tausig '92/'89  
 Kathryn and Chalmers Taylor  
 Jim and Denise Taylor  
 Marcie and Kevin Taylor /'84  
 Stacey Taylor '92  
 Andy Telanoff '91  
 Leah and Robert Temkin  
 Terri and Stanley Terada '85  
 Julie and Roderick Thayer  
 Jack Theimer  
 Hans Therp  
 Frank Thibodeau  
 Cheryl Thomas '84  
 Mrs. Eleanor L. Thomas  
 Les and Ellen Thomas '75/'78  
 Cristina and Scott Thomas  
 Tom and Mary Thomas  
 Caroline and Steve Thompson  
 Jude Thornton-Clark and Ian Clark  
 Mr. George Thurlow and Ms. Denise Eschardies '73  
 Lee and Derek Tien  
 Grace and Bill Tiernay '52/'53  
 Robin and Bruce Tiffany  
 Dr. Claire Tilem  
 Sharline Tillery-Yates and Brian Yates  
 Scott Tinley  
 Pamela LaVigne and Matthew Tirrell  
 Denise and Bradley Tisdale '89/'85  
 Konni and Kenneth Tittle /'85  
 Ann and Ron Tobin  
 Rachel and Waldo Tobler '87  
 Mrs. Alice Tokuyama  
 Samuel Tokuyama '69  
 Mr. Charles Tolman and Ms. Tiffany Nau '93  
 Cheryl and Stanley H. Tomchin  
 Linda and Kevin Tong



*Walking a footpath by the ocean*



Catherine L. Tonne and David W. Ohst '81  
 Teri and Vincent Tonne  
 Patricia Toppel  
 Debbi and Chris Torbet  
 Edna and Arthur Torsiglieri  
 Barbara and Sam Toumayan  
 Mary and Scott Tracy /'72  
 Think and Christine Tran  
 Stephanie Philwin and Tuan-Anh Tran /'89, '95  
 Timothy N. Tremblay  
 Angela Renee Trenholm and Susan Romero  
 Christen and Robert Truehaft  
 Mr. and Mrs. Will Triggs /'87  
 Bert and Tess Tritschler  
 Cheryl and Benjamin Trosky  
 Lap Bun Tsang  
 Jane Tschannel  
 Maria and James Tucker  
 Shirley and Kenneth Tucker  
 Linda and John Tulchin  
 Robert Tuler '78  
 Linda and David Turnball /'85  
 Jane and Stewart Turner  
 Julie and Mike Turner /'91  
 Britta and Richard Turner /'85  
 Dennis Turnipseed '70  
 Sandra Scott-Tyler and Sam Tyler  
 Betsy and Sydney Tyler  
 Jerry Uhland  
 Linda Ulrich '83  
 Debbie and Steve Umphreys  
 Amy and John Underwood  
 Lucia and Philip Ung  
 Alexis Upton Knittle and Lloyd Cook '70  
 Jeanne and William Ulrich  
 Wenonah Valentine '77  
 Yolanda and Fernando Valle  
 Lois and Paul Vallergera /'68  
 Dr. Petra Van Koppen '79, '84  
 Michael Van Meter  
 Kathryn and Alan Van Vliet  
 Winfred Van Wingerden  
 Robyn and Lawrence Varellas  
 Nancy and Bruce Varner /'58  
 Rita and Anthony Vasquez  
 Dawn Vereuck '92  
 Janet and John Vereuck  
 Jocelyne Verstaen  
 Sherry and Jim Villanueva  
 John Villar  
 Mary and Robert Villar  
 Suan and David Viniar  
 Ravishankar Viswanathan '94  
 Carole and Paul Viviano /'76  
 Almeria and Timothy Vom Steeg '90/'89  
 Paula Von Simson  
 Betsy von Summer-Moller and John Moller  
 Mr. and Mrs. Hubert Vos  
 Marilyn and John Wagner  
 David Waguespack '89  
 Jane Walker  
 Nathaly and John Walker  
 Sam and Shelley Walker  
 Valerie Walker '80  
 Jill and William Wallace  
 Barbara and Thomas Walsh  
 Fenying Xu and Robert Wang  
 Dr. and Mrs. Yulun Wang '82, '84, '88/'84  
 Daniela Kauffman and Richard Warburg  
 Deborah and Andrew Ward  
 Susan Ward '89  
 Dr. Bronwen Brindley and Mr. John Warren '83, '85/'76  
 Tara and John Washington  
 Linda and Steve Wasserman

Michael and Liat Wasserman  
 Jodee and Todd Watanabe /'88  
 Mr. W. Wright Watling  
 Dr. Richard J. Watts  
 Drs. Leland and June Webb '63  
 Ian and Louise Webb '59  
 Nathan Weber '96  
 Kathleen and Willes Weber  
 Ms. Jean Weidemann  
 Nancy Weidenmiller '55  
 Donna Weinert  
 Farrah and Mark Weinstein /'80  
 Tevya Weinthal '95  
 Christine and Brian Weiss '86/'86  
 Lynn and Barton Weitzenberg /'68  
 James Wells  
 Jane and William Wells  
 Marilyn and David Wenner  
 Jan and William Wesemann  
 Margaret and Reardon West  
 Deana and Shawn Westfall /'93  
 Mary and Timothy Weston /'69  
 Dr. and Mrs. Albert D. Wheelon  
 Dennis Whelan '79  
 Elisa Newman and Andrew White  
 Dee White  
 Kathleen and Scott White /'73  
 Anne and Tom Whitehair  
 Teri Wielenga '81  
 Mary and John Wiemann  
 Edward Wilbarger, Jr. '80  
 Maria Wilhelm and Fernando\* Fernandez  
 Edward Wilkerson  
 Liz and Lamar Wilkinson  
 MaryAna Wilkinson  
 Alice Willfong  
 Ms. Marie J. Williams '89  
 Richard Williams '59, The Richard Williams Family  
 Danielle and Melvin Willis '71/'68, '75, '03  
 Alaine and John Willott /'73  
 Kelly Wilson  
 Molly Wilson  
 Ralph and Irene Wilson '70/'66  
 Maritza Meija-Wilson and Travis Wilson '04/'02  
 Deborah Winant  
 Ann and Alastair Winn /'73  
 Ronald Winston  
 Dyanne and Erik Wipf  
 William and Marilyn Wirtz  
 Beth and Michael Witherell  
 Marianne C. Finerman and Stuart A. Wolman  
 Laura Truffaut and Stephen Wong  
 Lieutenant Colonel Norman M. Wood, Retired '64  
 Katie and Daniel Woods  
 Dr. and Mrs. Jerry Woolf '71  
 Ruth and James Worden '82/'82, '88  
 Amy Worth  
 John Wright '71  
 Leslie Wright  
 Paul Wright '88  
 Jennifer and Richard Wright /'73  
 Wesley Wright '99  
 Judith and George Writer  
 Crystal and Clifford Wyatt  
 Laura and Geof Wyatt  
 Carolyn and Philip Wyatt  
 Brett Wyland  
 Dr. Alan Wyner and Ms. Louise Blumberg  
 Antai and Xian Xu  
 Patrick and Christine Yam  
 Sheryl Yamamoto '84  
 T. Clarie Chao and Chung-Do Yang  
 Kuo Yang  
 Deborah and Bill Yates /'82  
 Kathryn and Michael Yates /'81



*Division of Dance students on stage*

Alice Yeh  
 Joan and Killian Ying  
 Naoya Yokoo  
 Judith and Brian Yorke '84/'84  
 Susan and David Yossem  
 Dr. Bruce Young '96  
 JoAnne and Michael Young  
 Pamela and D.A. Young  
 Verena Young  
 Keith Zalkin '82  
 Angeliki and Robert Zaller  
 Suzanne and Thomas Zarrilli  
 Lisa Zech  
 Dongyuan Zhao  
 Tina Reid-Ziegler and John Ziegler '84/'82, '83  
 Godeleine and Ira Ziering /'80  
 Jules Zimmer  
 Elizabeth and Francis Zok  
 Belinda and Steven Zola  
 Leslie and Ernie Zomalt '64, '79/'66, '72, '89  
 Patricia and Robert Zucherman  
 Nick Zwick

Carolyn Butcher '96, '08  
 Jessica Byron-Fields '09  
 Matthew Cadwell '03  
 Liza Cansino '04  
 Kevin Carden '05  
 Elliot Carney '08  
 Zachary Carson '10  
 Frank Castro '09  
 Monnica Cervantes-Steinhoff '04  
 Sarah Chan '09  
 Tulika Chandra '02  
 Jerry Chen '06  
 Chelsea Chinery '11  
 Malisa Chotisin '09  
 Lawrence Chou '10  
 Robert Connolly '06  
 Elizabeth Considine '85, '08  
 Lisa Coyle '05  
 Shona Crabtree and Alexander Macgillivray '06  
 Eduardo Cruz '10  
 Josh Daniel '10  
 Anh-Hieu Dao '05  
 Nicholas de Sieyes '03  
 Steven Decou '11  
 John DeFranco '02  
 Ingrid Dineen-Wimberly '04, '09  
 Alyssa Sherman '08  
 Robert Donald '03  
 Katie Doolittle '07  
 Steven Efada '11  
 Jennifer Esqueda '05  
 Steven Estrella '10  
 Alexander Ferguson '10  
 Enrico Ferri '09  
 Kathryn Frazer '13  
 Jonathan Fritzsche '09  
 Kimberly Gallagher '05  
 Matthew Gaudioso '12  
 Hani and Jonathan Geske /'04  
 Eleanor Glazer '06  
 Maggie Gosselin '03  
 Arnold Gowans '06  
 Aaron Harper '08  
 Zuhair Hasan '10  
 Travis Hearnberger '07  
 Ryan Helvey '03  
 Lorena Herrera '04  
 Eden Hildebrand '02  
 Karthik Jayaraman Raghuram '08, '11  
 Ramces Jimenez '06  
 Yuka Kadono '02  
 Hirotaka Kagiyama '05  
 Eileen Kang '10  
 Lyle Kaplan-Reinig '07, '08  
 Nicholas Katz '13  
 Joseph Kellener '08  
 Sophia Kenrick '09  
 Kathleen King '12  
 Tyler King '10  
 Mons Knudtson '15  
 Ryan Knutson '06  
 Shivnesh Kumar '07

#### **YOUNG ALUMNI CHANCELLOR'S COUNCIL**

**\$500 TO \$4,999**

Anonymous (2)  
 Stewart Abercrombie '03  
 Aaron Adelson '09  
 Linda Alcorn '09  
 Arcides Amaya '10  
 Eric Andres and Ulrika Tornqvist '10  
 Richard Arellano '06  
 Darren Artaud '11  
 Christopher Aubrey '08  
 Brent Avery '03  
 Francisco Azeredo '07  
 Waheed Baqai '03  
 Teresa and Jonathan Barnea '03/'02  
 Toby Bautista '08  
 James Beall '07  
 Christopher Beardshear '06  
 Robert Beckman '08  
 Joseph Becko '02  
 Tina Benevento '07  
 Robert Benson '07  
 Lee-Yin Chen and Ilan Ben-Yaacov '03/'99, '04  
 Jorge Bernal '05  
 Pranav Bhardwaj '09  
 Ravi Bhatia '11  
 Andrew Booth '08, '09  
 Elaine Borden '13  
 Bridget and Jock Bovington /'09  
 Jeffrey Braun '07  
 Karla Briceno '10  
 Kenneth Bright '02  
 Ryan Brittain '05  
 Madeline Brown '11  
 Tracy Bueno Perez '10  
 Aaron Bufe '15



*Taking the research under water*

Johnny Lim '09  
 Christopher Lindgren '04  
 Sheena and Adam Link '06/'05  
 Ryan Lioy '10  
 Sophie Loire '08  
 Noah Lopez '07  
 Rigoberto Lopez '09  
 Elizabeth Lovelock '11  
 Sandra Luna '10  
 Helene Marsh '04  
 Patricia Martinez '03  
 Mary McIlrath '06  
 Nicholas McNaboe '06  
 Oscar Melendez '11  
 Benjamin Meyers '05  
 Amanda Mitchell '12  
 Ali Mohammadi '08  
 Cristina Mota '08  
 Margaret Murphy '07  
 Robert Norton '11  
 Cassandra Ojeda '07  
 Derek Otte '07  
 Katharine Page and Michael Crowell '08/'09  
 Timothy Palsak '04  
 Kelsey Parker '10  
 Tyson Parsons '07  
 Jeffrey Peet '09  
 Victor Pena '07  
 Richard Perez '02  
 David Posley '11  
 Carrie Randall '04  
 Michael Rathbun '06  
 Ben Recknagel '13  
 Richard Rees '02  
 Chester Reyes '03  
 Faith Reynado '08, '10  
 Alan Rhoads '07  
 Daniel Ring '10  
 Zachary Ring '05  
 Joel Rodriguez-Flores '10  
 Laura Roenick '05  
 Stephen Gottfredson and Jim Rome '02  
 Maya Rupert '03  
 James Ryan '04  
 Anna Sabalone '05, '08  
 Kamyab Sadaghiani '08  
 Katherine Sakoda '05  
 Abel Santibanez '05  
 Dustin Sargent '08  
 April Sawvel '10  
 Casey Sbicca '07  
 Benjamin Schooler '04  
 Nicholas Schooler '12  
 Peter Schroeter '04  
 Michael Schwimer '04  
 Mary Shirley '07  
 Sundeep Sidhu '10

Harsh Singh '04  
 Brian Sisk '07  
 Ashley Skiffer-Thompson '11  
 Alex Small '02, '05  
 Colin Smith '11  
 Eric Snyder '10  
 Elizabeth Sorrentino '04  
 Michael Soussa '08  
 John Spann '09  
 Aleksandar Stanicic '09  
 Alexandria Staples '09  
 James Starr '02  
 Simone Steger '10  
 Justin Steinfadt '08, '11  
 Sabrina Sterling '06  
 Rebecca Stone '02  
 Danielle Storz '07  
 John Tate '03  
 Gunnar Terhune '11  
 Graham Thiel  
 Alex Trebby '03  
 Anurag Tyagi '06, '11  
 Esequiel Vargas '06  
 Brian Vicente '11  
 Matthew Vlasach '06  
 Nicholas Volmar '07  
 Daniel Voorhies '03  
 Carol Wang '10  
 Daniel Watase '10  
 Tiffany Werner '07  
 Jeremy White '14  
 Jonnie-Erica and Das Williams '05  
 Marva Williams '08  
 Emma Wilson '10  
 Julie Wilson '05  
 Mariette Wingard '07  
 Tristan Winneker '03, '11  
 Andrew Wirth '06  
 Julian Wong '06  
 Bryce Yoshimura '10  
 Brian Young '09  
 Yuemin Yu '05, '07  
 Shane Zamora '08, '10  
 Lily Zheng '07  
 Dale Zurawski and Geoffrey Slaff '04

### Chancellor's Patrons

*The Chancellor's Patrons giving society is comprised of donors who have made annual donations of \$1,000 or more for the last five consecutive years. The following generous donors are being recognized for their loyal over-time commitment to this great university.*

Anonymous (8)  
 Barbara and Stephen Abbott '65/'65  
 Lynda and Scott Adelson  
 Dana Aftab '85  
 Susan Aldrich Wagner and William Wagner  
 Paul Alex  
 Dennis W. Allen '64  
 Ms. Janet A. Alpert '68  
 Jack Amon  
 Christine and Donald Anderson  
 Judy and Bruce Anticouni  
 Erik and Barbara Antonsson  
 Lucy and Ralph Archuleta  
 Robert Arenz, Jr. '80  
 Jody and John Arnhold '75  
 Kelly and Robert L. Avery  
 Bethany Ulmer and David Bancroft '73  
 Cheryl and Jim Barber '67/'66  
 Virginia and Darryl Barrett '67

Christine Mitchell and Ronald Bartell '73, '75  
 Cecile Bartman  
 David A. Bartman '94  
 Barbara and John Bartman  
 Gary and Mary Becker  
 June Behrens '47  
 Jill and Arnold Bellowe  
 Michael Berger '70  
 Arlene and Barrie Bergman  
 Donn R. Bernstein H '79  
 Kathleen and Mark Berry '73  
 Mark and Susan Bertelsen '66/'67  
 Fred C. Best  
 Sue and Ed Birch/H '95  
 Phil and Charlene Bosl '68/'69  
 Susan E. Bower '81  
 Marilyn and Michael Bowers  
 Mr. and Mrs. William K. Bowes, Jr.  
 Susan Bowey  
 Richard and Kathryn Breaux '67/'68  
 Diane and Philip Brotherton '83  
 Mr. and Mrs. Ralph A. Brown  
 Drs. Thomas C. and Paula Yurkanis Bruice  
 Bonnie and Frank Burgess  
 Dan and Meg Burnham  
 Jack Buttery '67, '69  
 Paulette and John Callahan  
 Kathy and Steve Campbell '63/'63  
 Alison and Donald W. Carlson '74  
 Valerie and R. Mark Carney  
 Donna and Dennis Carpenter  
 Mrs. Marcia L. Carsey H '04  
 Willy Chamberlin  
 Beverly and John Colgate '69  
 J.W. and Sue Colin  
 Sandy and Robert Comstock  
 Judy and Dan Contreras  
 Marni and C. Michael Cooney '73/'66  
 James B. Cooper and Robin Zierau-Cooper\*  
 Mr. and Mrs. Stephen E. Cooper '68/'69  
 William Cornfield  
 Mr. and Mrs. Bruce C. Corwin H '97  
 Rafael Costas '86  
 Michelle and John Cowell IV '90  
 Gayle and Craig R. Cummings '75/'72  
 Stewart and Louisa Cushman '93/'93  
 Gary Dales '77  
 Jack and Laura Dangermond  
 Ann Daniel  
 Barbara and Mark Daugherty  
 Jean Davidson and Robert Feinstein  
 Nancy and Roger Davidson  
 Phyllis de Picciotto and Stan Roden  
 Gene Sinsler and Patty DeDominic  
 Mr. and Mrs. James G.P. Dehlsen  
 Lisa and Albert DeSanti  
 William and Janet Dinsmore '68  
 Kathleen and James Doty '70/'71  
 Mr. Michael K. Douglas '68  
 Kathleen and Harold Drake  
 Patricia and James F. Drinkwater '73  
 Bettina and Glenn Duval '80  
 Marguerite and Charles Eckberg '70  
 Gary and Rebecca Eldridge  
 Barbara and Rune Eliassen  
 Linda and Doug Emery  
 Jan and Brian Escalera  
 Doris and Tom Everhart  
 Leni Fe Bland  
 Carol and Douglas Fell '64/'63  
 Betty and Gino\* Filippin  
 David Finkel  
 Dr. and Mrs. Michael Fisher  
 Dorothy and Stanley Flaster  
 William and Christine Fletcher  
 Sallie and Paul Flum  
 Dr. William F. Foran and Mrs. Vivien F. Stanley-Foran

Anabel Ford and Michael Glassow '74, '76, '81  
 Dr. Peter C. Ford and Dr. Mary Howe-Grant  
 Martin and Julia Fornage '01, '03  
 Scott and Jennifer Frank '82  
 Mr. and Mrs. Donald Fredericksen '52/'51  
 Dr. Roger A. Freedman and Ms. Caroline Robillard  
 Terri and Stephan Frenkel  
 Diane Gale '85  
 Dr. Yolanda M. Garcia '70, '72, '76, '93, '98  
 John\* and Faith Geoghegan '59/'59  
 Debra and Dan Gerber  
 Anne Ready and David L. Gersh  
 Pat Mahony and Randy Getz '73/'73  
 Marilyn Gevirtz H '96  
 Mary and Dennis Ghan '74/'74  
 Ursula and Bradford Ginder '99, '03/'70, '71  
 Bobbi and David\* Giorgi  
 Erlene and Dexter Goodell '61, '87/'61  
 Dr. Steven Humphrey and Mrs. Sue Grafton  
 Mr. and Mrs. Richard A. Grant, Jr.  
 Lea and Robert Grantham '75  
 Mr. Jeffrey W. Graver '93  
 Jo Swanda and Paul Graziano  
 Dr. Judith L. Green  
 Patricia Gregory  
 Marc Grossman and Mildred Patterson '73  
 Toni and Thomas Guckert '79/'79  
 Paul Guido and Stephen Blain  
 Lois and Richard Gunther  
 Meg and John Gurley '78, '83  
 Norman and Jane Habermann  
 Mr.\* and Mrs. Stephen Hahn  
 Rene and Norman Hale '71  
 Eva and Yoel Haller  
 Dr. and Mrs. Rodman S. Hamer  
 Janice and Stephen Hamill  
 Barbara and Tom Harold  
 Simone and Laurentius Harrer  
 Eleanor L.\* and Thomas J. Harriman  
 Dr. and Mrs. Fred James Harris '68  
 Mr. and Mrs. Paul W. Hartloff, Jr.  
 Dr. Craig Hawker and Ms. Athena Philippides  
 Robert Michael Hayes  
 Dr. and Mrs. Alan J. Heeger  
 David Hendrickson '80  
 Faith and Melvin Henkin  
 Jeff and Judy Henley '66/H '09  
 James Heslin and Rose Hau '73  
 Cecilia and Milton Hess  
 Linda and Steven Hicks '71/'70  
 Mr. and Mrs. John A. Hinman, III '71  
 Mrs. C. Warren Hollister  
 Roslyn and David Holtzclaw  
 Maurine and Preston Hotchkis  
 Heidi and David Huff '89/'89  
 Dr. and Mrs. R. Stephen Humphreys  
 Hollye and Jeffrey Jacobs  
 Patrick Morrin and Janice Jagelski '87  
 Anne and Thomas Jagodits '91/'90  
 Susan C. Jamgochian '63, '81  
 Mrs. Gina Laun and Mr. Joseph Jannotta, Jr.  
 Lucille and Richard Janssen  
 Ms. Holly P. Jennings  
 Bonnie and Richard Jensen /H '06  
 Ellen and Peter Johnson  
 Sharyn Johnson  
 Tyrena and William Jones '77  
 Mr. and Mrs. Peter C. Jordano H '03  
 E '68 and Eric Juline  
 Martha and Peter Karoff



Harvey Karp  
 Stephen and Lauren Katz  
 Joanne Moran and Mitchell Kauffman  
 /'77  
 Irene and Robert Kavanaugh /'61  
 Fred Kavli H '05  
 Deborah and John Keever '67/'67  
 Madge Kelley '81  
 Julie and Jamie Kellner  
 Elaine and Herbert Kendall  
 Connie and Richard Kennelly  
 Dr. and Mrs. Wayne R. Kidder  
 Laura and Benjamin King /'94  
 Gregory P. King '76, '80  
 Marvel Blakeman Kirby '51  
 Kyoko and Takashi Kiuchi  
 Sherri and Daniel Kleeburg /'86  
 James and Janice Knight  
 Mark and Carolyn Koenig  
 Robert Kohn  
 Louise and Stephen Komp '63, '68  
 Larry Koppelman and Nancy Walker-  
 Koppelman  
 Carol Kosterka '67  
 Susan and Brent Krantz /'81  
 Jack and Kay Krouskup '71/'71  
 Deborah Kruse  
 Janet and Alan Krusi /'77  
 Nikki and Steven Lafferty /'75  
 Richard and Peggy Lamb /'72, '87  
 Robert and Patricia Leamy  
 R. Marilyn Lee and Harvey Schneider '69  
 Ilan and Barbara Levi  
 Christine C. Wong and Jeffrey T. Light  
 Carl and Jo Lindros  
 Mr.\* and Mrs. Jon Lovelace  
 Michael and Diane Lowry '66  
 Gene and Susan Lucas '73/'73  
 Mr. Keith Lupton '90  
 Sandra Lynne  
 Stuart and Hannelore Mabon  
 Lomena and Colm Macken  
 James Maloney and Andrew Nance '84  
 Dr.\* and Mrs. Charles H. Markham  
 Bernadette and Timothy Marquez  
 Mrs. Margaret Mateer-Isaacs and Mr.  
 Craig L. Isaacs '84/'84  
 Dr. and Mrs. James M. Mattinson '66/'64  
 Marilyn and Richard Mazess  
 Miren Letemendia and Darryl McCall /'78  
 Charles McCutchen  
 Tina Hansen McEnroe and Paul V.  
 McEnroe '89  
 Natalie and Bruce McFadden  
 Mrs. Anne McInnis '69  
 Amanda and James McIntyre  
 Kathryn D. McKee '59  
 Gloria and John McManus  
 Marilynn and James McNamara '82/'85  
 Professor and Mrs. Duncan Mellichamp  
 H '09/MA '70  
 Mr. and Mrs. Steven C. Mendell '63  
 Eleanor and Richard Miguez '64/'66  
 Anne and Hale Milgrim '87  
 Sharyne and Gene Miller  
 Marlin and Ginger Miller  
 Glen H. Mitchel, Jr.  
 Mary and Thomas Mitts  
 Kent M. Vining and Julie Ann Mock  
 '70/'75  
 Herman Warsh\* and Maryanne Mott  
 Mr. Sam Mudie and Ms. Patricia Glaser  
 Mr.\* and Mrs. Raymond K. Myerson  
 Mr. John M. Nakata '78  
 Eileen and William Nasif  
 Jeannine and Robert Nida '60/'62  
 Dale and Mike Nissenson  
 Mr. and Mrs. Donald D. O'Dowd  
 Barbara Offerman  
 Orfalea Foundation

Katherine and Paul Page  
 Kathleen and Ralph Paige '71/'70, '72  
 Constance Penley  
 Stephanie and Eliot Peters '01/'00  
 Joy Dittberner and Thomas Peters  
 '76/'73  
 Joseph Phillips  
 Elizabeth and Peter Popoff /'70  
 Wendy V.C. Purcell and Kenneth L.  
 Wilton '84  
 Mr. and Mrs. Robert L. Raede, Jr. '80/'80  
 Deborah and John Mackall '79, '86  
 Mr. and Mrs. Lynn P. Reitnouer '55/'54  
 Joan Pascal and Ted Rhodes  
 Lord Paul Ridley-Tree\* and Lady Leslie  
 Ridley-Tree  
 Constance and William Ring  
 Dr. Donald Talbot Rink  
 Victoria Riskin and David Rintels  
 Roger and Mary Ritter '69  
 Drs. Scott and Shannon Rivenes '88  
 Barbara and Raymond Robins  
 Susan J. Rose and Allan Ghitlerman  
 Raymond Rubenstein '53  
 Dr. and Mrs. Richard Ryu  
 Alice and Douglas Safford '85/'85  
 Paul '92 and Susan Sams  
 Diane and Douglas Scalapino  
 Harvey and Hope Schechter '47  
 Warren G. and Katharine S. Schlinger  
 Arent\* and Jean Schuyler '61  
 Mr. and Mrs. Mark J. Schwartz '84  
 Ronda and Richard Scoby  
 Lilyan Seibler and Bernad Seder  
 David Seibold and Karen Myers  
 Susan and Daniel Semegen  
 Donna and Dana Severy  
 Stanley K. and Betty W. Sheinbaum  
 Candace and David Short '67/'62  
 Stephanie and Fred Shuman  
 Leigh and Todd Silva '92/'92  
 Michael Silveira '77  
 Gretchen and Jim Simpson '69/'69  
 Kenneth and Elizabeth Slaughter '79  
 Patricia and Tim Smale '70/'78  
 Dr. and Mrs.\* John Sonquist  
 Carole Lebbin-Spector and Phillip  
 Spector /'72  
 Sara and Theodore\* Spencer  
 Marianne and Norman Sprague /'69  
 Judith C. Stapelmann '63, '65  
 Fredric E. Steck '67  
 Debra and Stephen Stewart  
 Drs. Cynthia and Michael Stohl  
 Deborah and Dwight Streit  
 Ms. Mary J. Swalley  
 Jody and Paul Sweet /'69  
 Christine Talbott and John Galli '74  
 Barbara and Timothy Tasker /'89  
 Daphne and Greg Tebbe  
 Dr. and Mrs. Theo Theofanous  
 Mrs. Eleanor L. Thomas  
 Mr. George Thurlow and Ms. Denise  
 Eschardies '73  
 Grace and Bill Tiernay '52/'53  
 Ann and Ron Tobin  
 Barbara and Sam Toumayan  
 Michael and Anne Towbes  
 Mary and Scott Tracy /'72  
 Angela Renee Trenholm and Susan  
 Romero  
 Bert and Tess Tritschler  
 Cheryl and Benjamin Trosky  
 Robert Tuler '78  
 Julie and Mike Turner /'91  
 Jo Beth and Donald\* Van Gelderen  
 Dr. Petra Van Koppen '79, '84  
 Dr. and Mrs. Daniel Vapnek  
 Dawn Vereuck '92  
 Janet and John Vereuck  
 Betsy von Summer-Moller and John

Moller  
 Dr. Bronwen Brindley and Mr. John  
 Warren '83, '85/'76  
 Mr. W. Wright Watling  
 Marsha and William Wayne  
 Drs. Stephen Weatherford and Lorraine  
 McDonnell  
 Claudia and Alec Webster '75/'76  
 Ms. Jean Weidemann  
 Bernice and Louis Weider  
 Lynn and Barton Weitzenberg /'68  
 Lisa and Howard Wenger '82/'82  
 Mary and Timothy Weston /'69  
 Ann and Philip White /'84  
 Mr. Bruce G. Wilcox '77  
 Mr. and Mrs. Craig Williams  
 Ms. Marie J. Williams '89  
 Danielle and Melvin Willis '71/'68, '75,  
 '03  
 Ralph and Irene Wilson '70/'66  
 William and Marilyn Wirtz  
 Beth and Michael Witherell  
 Noelle and Dick Wolf  
 Lieutenant Colonel Norman M. Wood,  
 Retired '64  
 Jane Woodward '80  
 Susan and Bruce Worster '70/'68, '71  
 Laura and Geof Wyatt  
 Patrick and Christine Yam  
 Henry and Dilling Yang H '01  
 Andre Yew  
 Susan and David Yossem  
 Dr. Bruce Young '96  
 Patricia and Joe Yzurdiaga  
 Michael and Diane Ziering '78  
 Leslie and Ernie Zomalt '64, '79/'66,  
 '72, '89  
 Patricia and Robert Zucherman

Autism Science Foundation  
 Avery Dennison Corporation  
 BIOPAC Systems Inc.  
 Albert and Elaine Borchard Foundation,  
 Inc.  
 Bosch Corporate Research and  
 Development  
 Boughton Educational & Scholarship  
 Fund  
 Brownstein Hyatt Farber Schreck  
 Bruker Daltonik GmbH  
 Veeco Instruments, Inc.  
 Burroughs Wellcome Fund  
 California Forest Research Association  
 California Redwood Association  
 Cancer Center of Santa Barbara  
 Capital Group Companies, Inc.  
 Center for Judaism  
 Central Coast Wine Classic Foundation  
 Chiang Ching-Kuo Foundation  
 Cisco Systems, Inc.  
 Pierre Claeysens Veterans Museum &  
 Library  
 Michael J. Connell Trust  
 Conservation International Foundation  
 Jack Kent Cooke Foundation  
 Corning Corporation  
 Council on Library and Information  
 Resources  
 Cree, Inc.  
 Deckers Outdoor Corporation  
 Delta Psi Building Company  
 Robert W. Deutsch Foundation  
 Oliver and Jennie Donaldson Charitable  
 Trust  
 The Dow Chemical Company  
 DSM Research  
 Electrostatic Discharge Association, Inc.  
 Enlight Biosciences LLC  
 Ernst & Young Foundation  
 Exxon Mobil Foundation  
 FLIR Systems  
 Bill and Melinda Gates Foundation  
 GE Foundation  
 GE Global Research  
 The J. Paul Getty Trust  
 Charlotte Geyer Foundation  
 Gigoptix Inc.  
 Goleta Valley Land Trust  
 Google, Inc.  
 The William T. Grant Foundation  
 Gwangju Institute of Science and  
 Technology  
 Hewlett-Packard Company Labs  
 HRL Laboratories, LLC  
 IBM T. J. Watson Research Center  
 Institut Ramon Llull  
 Instituto Camoes

**FOUNDATIONS, ASSOCIATIONS,  
 TRUSTS, ORGANIZATIONS, AND  
 CORPORATE CONTRIBUTORS  
 \$10,000 AND ABOVE**

Anonymous (8)  
 The Aerospace Corporation  
 Agilent Technologies Foundation  
 Air Products and Chemicals, Inc.  
 Allergan Foundation  
 Alliant Credit Union  
 American Chemical Society  
 American Council of Learned Societies  
 American Health Assistance Foundation  
 Amgen, Inc.  
 Apple Matching Gifts Program  
 Applied Materials, Inc.  
 Richard F. Aster, Jr. Foundation  
 ATK Space Systems



*Running the labyrinth at the campus lagoon*



*Creating art, inspired by nature*

Instituto Vasco Etxepare Euskal Ins  
Intech LLC  
Intel Corporation  
International Foundation for  
Telemetering  
International Retinal Research  
Foundation  
The Japan Foundation  
JDS Uniphase Corporation  
Robert Wood Johnson Foundation  
Kaiser Permanente  
King Abdullah University of Science &  
Technology  
Konarka Technologies  
Lockheed Martin  
Marisla Foundation  
Mattel, Inc.  
Medimunne, Inc.  
The Andrew W. Mellon Foundation  
Mentor Graphics  
Minerva Biotechnologies Corporation  
Ministry of Education, Singapore  
Mitsubishi Chemical USA, Inc.  
Montecito Bank & Trust  
Gordon E. and Betty L. Moore  
Foundation  
Nanoelectronics Research Corporation  
NARSAD  
Narus, Inc.  
National Research Council  
The Kenneth and Eileen Norris  
Foundation  
Northrop Grumman Space & Mission  
System Corporation  
Ocean Conservancy  
Omidyar Glocal Fund of the Hawaii  
Community Foundation  
Orfalea Foundation  
Organization for Autism Research, Inc.  
The David and Lucile Packard Foundation  
The Patent Office Japanese Government  
PG & E Corporation  
PPG Industries Foundation  
PricewaterhouseCoopers LLP  
Procter & Gamble  
QUALCOMM, Inc.  
Raytheon  
The Shelley and Donald Rubin  
Foundation  
RXI Pharmaceuticals Corporation  
Russell Sage Foundation  
SAGE Publications, Inc.  
Santa Barbara Cottage Hospital  
Santa Barbara Foundation

Semnani Family Foundation  
The Philip and Aida Siff Educational  
Foundation  
The Simons Foundation  
Sims Group/Metal Management  
Alfred P. Sloan Foundation  
Social Venture Partners International  
SolarReserve  
Sony Corporation of America  
Sony Pictures Entertainment, Inc.  
Sosnick Cobbe Sports, Inc.  
Southern California Edison  
Taipei Economic and Cultural Office  
Takatori Corporation  
The Tatman Foundation  
The Herman P. and Sophia Taubman  
Foundation  
TELACU Education Foundation  
Teledyne Scientific Company  
John Templeton Foundation  
Tinybell Charitable Fund  
UCSB Alumni Association  
United Negro College Fund Inc  
United Technologies  
Verizon Foundation  
Walton Family Foundation  
Andy Warhol Foundation for the Visual  
Arts  
WateReuse Research Foundation  
Wells Fargo Matching Gift Center  
Westmont College  
William E. Weiss Foundation, Inc.  
William H. Kearns Foundation  
William Gillespie Foundation  
WT Fund  
Wyles Trust Foundation  
Xerox Foundation

## Matching Gifts

*UC Santa Barbara gratefully  
acknowledges the following  
corporations and foundations that  
generously matched gifts from alumni,  
parents, and friends.*

Abbott Laboratories  
Adobe Systems  
Advanced Micro Devices, Inc.  
Allied World  
American Express Foundation  
American International Companies  
The Amgen Foundation

Apple Matching Gifts Program  
Arete Associates  
AT&T Foundation  
Autodesk  
AXA Foundation  
BAE Systems  
Bank of America Matching Gifts Program  
Baxter International, Inc.  
BlackRock Matching Gift Program  
Boeing Company  
BP America Inc.  
Bristol-Myers Squibb Foundation  
C.M. Capital Foundation  
CA, Inc.  
California Healthcare Foundation  
Capital Group Companies, Inc.  
Caterpillar Foundation  
The Charles Schwab Corporation  
Foundation  
Chevron Matching Gift Program  
Chubb & Son, Inc.  
Clorox Company Foundation  
Crail-Johnson Foundation  
Dell Employee Giving Program  
Deloitte Foundation  
Deutsche Bank Americas Foundation  
DirecTV  
Eaton Charitable Fund  
Edison International  
Ernst & Young Foundation  
Exxon Mobil Foundation  
Fair Isaac Corporation  
FLIR Systems  
Fluor Foundation  
Gartner  
Bill and Melinda Gates Foundation  
GE Foundation  
Genentech Foundation  
Goldman Sachs Fund  
Google Matching Gifts Program  
Honeywell International Charity  
Matching  
Houghton Mifflin Company  
IBM Matching Grants Program  
Insurance Services Office Inc.  
Intel Foundation  
Intuit  
JK Group  
Johnson & Johnson  
Juniper Networks Matching Gift Program  
JustGive  
Karl Storz Imaging  
Key Foundation  
Kirkland & Ellis Foundation  
KPMG Peat Marwick Foundation

Lam Research Foundation  
The John D. and Catherine T. MacArthur  
Foundation  
McKesson Foundation, Inc.  
Medtronic Foundation  
Mentor Graphics  
Merck Company Foundation, Inc.  
Microsoft Matching Gift Program  
Minerals Technologies Incorporated  
National Instruments  
National Semiconductor  
New York Life Foundation  
Northrop Grumman Foundation  
Northwestern Mutual Life  
Nuveen Investments, Inc.  
Occidental Petroleum Foundation  
Oppenheimer Funds  
Oracle Corporation  
Pacific Life  
Parker-Hannifin Foundation  
Pfizer, Inc.  
Pacific Gas & Electric Company  
Plains Exploration & Production Company  
Portland General Electric Company  
PPG Industries Foundation  
PricewaterhouseCoopers Foundation  
PricewaterhouseCoopers LLP  
QLogic Corporation  
QUALCOMM, Inc.  
Raytheon Company  
RollGiving  
RSUI  
San Antonio Area Foundation  
Science Application International  
Corporation  
Sempra Energy  
Shell Oil Company Foundation  
Sony Corporation of America  
State Farm Companies Foundation  
State Street Matching Gift Program  
TCF Foundation  
Time Warner Employee Grant Program  
Toyota Motor Sales USA Foundation, Inc.  
U.S. Bancorp  
U.S. Borax, Incorporated  
Unilever United States Foundation, Inc.  
United Technologies  
Varian Associates, Inc.  
Verizon Foundation  
VISA GivingStation  
Volkswagen Group of America  
Walt Disney Company Foundation  
Wells Fargo Matching Gift Center  
Xerox Foundation  
Yahoo! Inc.



*The UCSB Women's Basketball team, 2012 Big West Conference champions*



# UC Santa Barbara Foundation

OFFICERS AND TRUSTEES JULY 1, 2011 - JUNE 30, 2012

## OFFICERS

### *Chair*

Bruce G. Wilcox '77

### *Vice Chair, Development*

Gwedolyn A. Brown '71

### *Vice Chair, Donor Relations*

Edward E. Birch H'95

### *Vice Chair Investments and Treasurer*

Jane H. Williams

### *Secretary*

Susan Worster '70

### *Past Chair and Nominations Chair*

Daniel P. Burnham

### *Executive Director*

Beverly J. Colgate\*

### *Chief Financial Officer*

Eric J. Sonquist\*

David G. Adishian '89  
Janet A. Alpert '68  
Sarah Argyropoulos  
Richard A. Auhll  
Barry A. Berkus '55  
Mark A. Bertelsen '66  
Richard A. Bocci  
Henning Bohn  
Richard Breaux '67  
Marcia L. Carsey H'04  
Shing Chang '75  
Ann Cady Cooper '62  
Stephen Cooper '68  
Stephen Crowe  
Roger Davidson  
Deanna C. Dehlsen  
William A. Dinsmore '68  
Diandra M. Douglas '82  
Robert W. Duggan '66  
Diana T. Dyste Anzures '02  
Gary E. Erickson '63

Scott Frank '82  
William Garlock '71  
Marilyn Gevirtz H'96  
Frederick W. Gluck  
Norman Habermann  
Eva Haller  
Norris Haring  
Thomas J. Harriman  
W. Roger Haughton '70  
Judith Hopkinson  
Blair Hull '65  
Janice Jagelski '87  
"Packy" William K. Jones '77  
Peter C. Jordano H'03  
Fred Kavli H'05  
Marvel Kirby '51  
Jack Krouskup '71  
Gary Leal  
R. Marilyn Lee '69  
Carl Lindros  
Mark D. Linehan '85

Pamela Lopker '77  
Lillian Lovelace  
Gene Lucas '73  
John Marren '85  
Darryl T. McCall '78  
Sheila Bourke McGinity  
Kathryn D. McKee '59  
Duncan Mellichamp H'09  
Steven C. Mendell  
Harry Nelson  
Alex Pananides H'06  
Joseph H. Pollock H'10  
Ceil Pulitzer  
Wendy Purcell '84  
Lynn P. Reitnouer '55  
Lady Leslie Ridley-Tree H'12  
Ronald Rubenstein '66  
Richard K.N. Ryu  
Harvey B. Schechter '47  
Jean Schuyler  
Mark Schwartz '84

Kenneth P. Slaughter '79  
Eric Sonquist  
Norman Sprague '69  
Judith Stapelmann '63  
Fredric E. Steck '67  
Susan Tai '74  
James S. Taylor  
William S. "Tom" Thomas  
George Thurlow '73  
Michael Towbes  
James J. Villanueva  
Kent Vining '70  
James R. Warren '76  
Harrison Weber  
Phillip H. White '84  
Gary L. Wilcox '69  
Jane Williams  
Richard Williams  
Alan Wyner  
Patrick Yam  
Henry T. Yang H'01

\*Denotes University Trustee





THE CAMPAIGN FOR THE  
University of California  
**Santa Barbara**