



UC SANTA BARBARA

PARTNERS IN INNOVATION

The Annual Report of Private Giving
University of California, Santa Barbara

FOR THE YEAR ENDING JUNE 30, 2009



TABLE OF CONTENTS

Ensuring Excellence	1
Financial Highlights	2
Philanthropy at Work	3
Developing New Energy Solutions	4
Enhancing Public Programming	5
Supporting the Promise of Distinction	6
Exploring the Universe	7
Pioneering a New Field	8
Advancing Scientific Discovery	9
Recognizing Distinction	10
Preparing the Next Generation of Scholars	12
Honor Roll of Donors	14
The Campaign for UC Santa Barbara	24
Officers and Trustees of the UC Santa Barbara Foundation	24

ABOUT THE COVER

UC Santa Barbara and Campus Point at dawn

PHOTO BY TONY MASTRES

Ensuring Excellence

UC Santa Barbara's accomplishments are enhanced immeasurably by philanthropic gifts, and we are sincerely grateful to our devoted alumni, parents, faculty, staff, and friends for their steadfast generosity and inspirational commitment to the future excellence of the



Chancellor Henry T. Yang and Daniel P. Burnham

campus, especially in these challenging times. ■ The Campaign for UC Santa Barbara continues to attract strong private support for the campus, thus far generating a total of \$544 million for priority initiatives. Of that total, more than \$40 million was raised in 2008-09 for student scholarships, research, and academic programs. Although contributions were down sharply from the previous record year, funds raised exceeded earlier projections due to a remarkable increase in the number of

gifts received. ■ Since the campaign was launched in 2000, we are proud to report that 57 endowed professorships have been established to enhance teaching and research and 139 fellowships were created to attract outstanding students. Campus facilities greatly enhanced by private support include the new Education, Social Sciences, and Media Studies Complex of three buildings on the west side of the campus. ■ California was hit particularly hard by the economic downturn, resulting in huge budget reductions for the University of California and its campuses. Planning is now under way at UC Santa Barbara to identify priorities for the next phase of our campaign that will help protect and build on what we have already achieved. ■ Please accept our heartfelt appreciation for your extraordinary support. Your partnership will continue to play a pivotal role in enabling our campus to respond to fiscal challenges in ways that do not compromise our commitment to quality, innovation, access, and excellence.

Daniel P. Burnham, Chair
UC Santa Barbara Foundation

Henry T. Yang, Chancellor

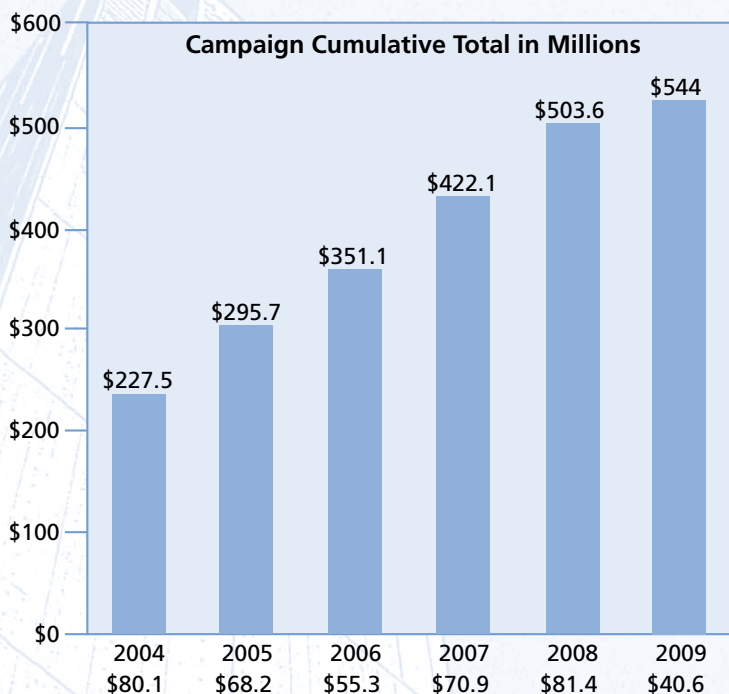
Financial Highlights

Private Giving 2005-2009

Year	Total
2004-05	\$68,242,361
2005-06	\$55,391,318
2006-07	\$70,951,832
2007-08	\$81,456,812
2008-09	\$40,629,193*

Private Funds 2008-09

Sources	Total
Individuals	\$10,716,745
Campus Organizations	\$925,937
Corporations	\$8,404,309
Foundations	\$18,855,770
Other Sources	\$1,726,432
Total	\$40,629,193*



Below each bar is the total raised for the fiscal year indicated; the number at the top is the progressive total for the entire campaign.

Campus Recipients of Private Funds

Academic Affairs		\$1,009,000
Bren School of Environmental Science and Management		\$569,401
College of Creative Studies		\$91,300
Gevirtz Graduate School of Education		\$479,137
Humanities, Social Sciences, College of Letters and Science		\$7,154,068
Art Museum	\$553,708	
Humanities and Fine Arts	\$2,882,839	
Social Sciences	\$3,679,881	
Other Letters and Science Support	\$37,640	
Intercollegiate Athletics		\$671,313
Kavli Institute for Theoretical Physics		\$1,316,592
Libraries		\$592,495
Marine Science Institute and Natural Reserve System		\$3,915,815
Programs and Services		\$4,677,075
Student Affairs	\$1,112,206	
Arts & Lectures	\$1,843,184	
Academic Programs	\$157,222	
General Administrative Support	\$1,564,463	
Engineering and the Sciences		\$18,076,485
California NanoSystems Institute	\$93,500	
College of Engineering	\$12,602,004	
Mathematical, Life, and Physical Sciences	\$4,729,955	
Materials Research Laboratory	\$567,060	
Technology Management Program	\$83,966	
Unrestricted		\$2,076,512
Total		\$40,629,193*

*Includes gifts, pledges, and private grants received by the UC Santa Barbara Foundation and the UC Regents.

Philanthropy at Work



UC Santa Barbara is proud to recognize the growing number of alumni, parents, and friends, as well as corporations, foundations, and organizations, who made generous contributions to The Campaign for UC Santa Barbara in the year ending June 30, 2009. Their philanthropic gifts will enhance teaching and research, strengthen existing areas of excellence, and make it possible to develop new, innovative academic programs.

To all of our supporters, especially those listed in the Honor Roll of Donors that begins on page 14, UCSB expresses its sincere gratitude and profound appreciation. On the pages that follow are just a few examples of the ways in which the generosity of UC Santa Barbara's benefactors supports academic excellence and creates new opportunities for learning and discovery.

The campus skyline has changed with the addition of new buildings.

Developing New Energy Solutions

The Institute for Energy Efficiency in the College of Engineering has received a \$500,000 gift from George W. Holbrook Jr.

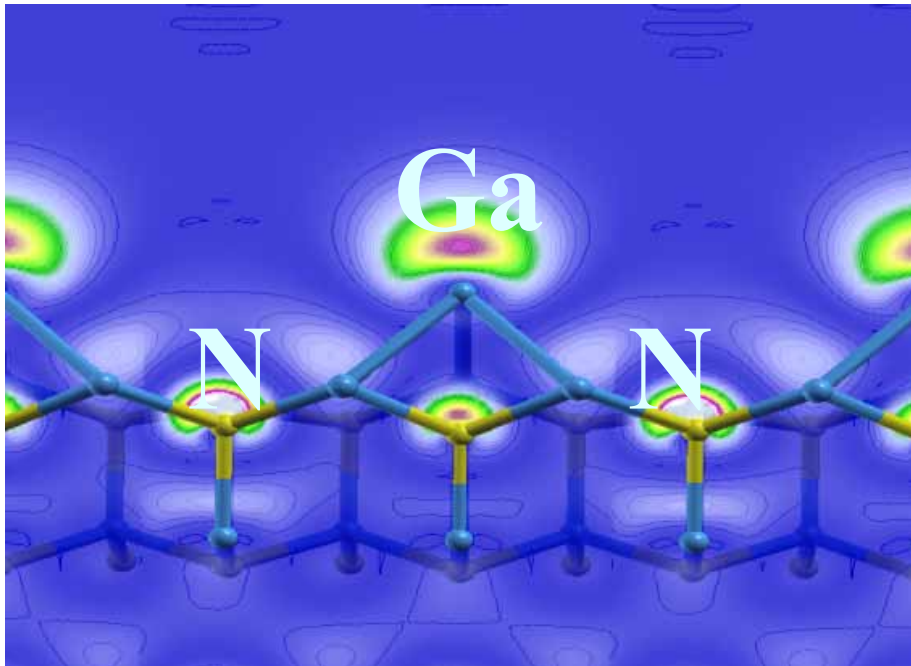
to support the development of energy efficient technologies, including more efficient electronics, computers, buildings, lighting, and photovoltaics. The pioneering interdisciplinary institute brings together 50 campus researchers with related expertise to develop energy-saving technologies in lighting, computing, building, manufacturing, and transportation. Holbrook serves on the institute's Director's Council.

The institute was recently awarded \$19 million in federal economic stimulus funds to launch a new Center for Energy Efficient Materials. The center is one of 46 Energy Frontier Research Centers established by the Department of Energy to address the nation's critical energy challenges. UCSB is leading the center, which also involves researchers from UC Santa Cruz, Harvard University, the National Renewable Energy Laboratory, and Los Alamos National Laboratory.

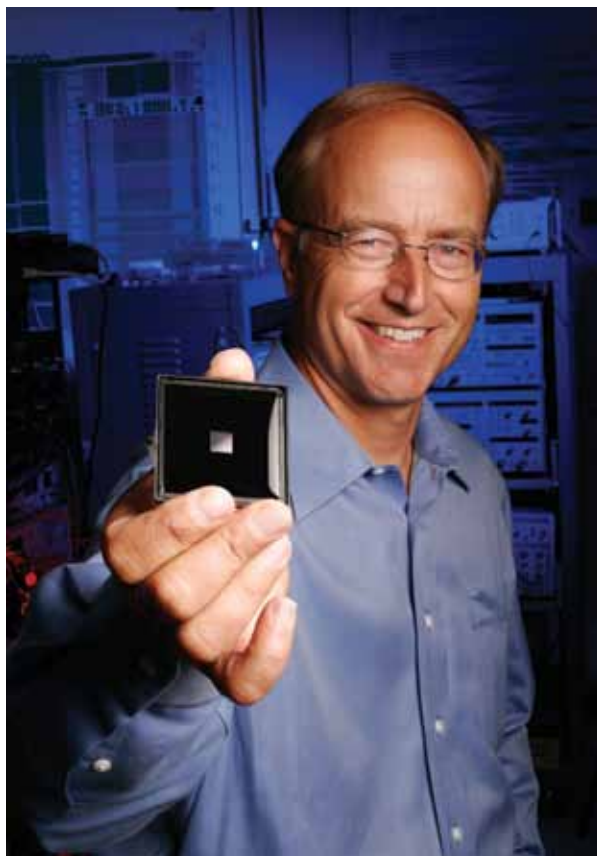
The goal of the center is to discover and develop novel materials that control the interactions between light, electricity, and heat at the nanoscale for improved solar energy conversion, solid-state lighting, and conversion of heat into electricity.



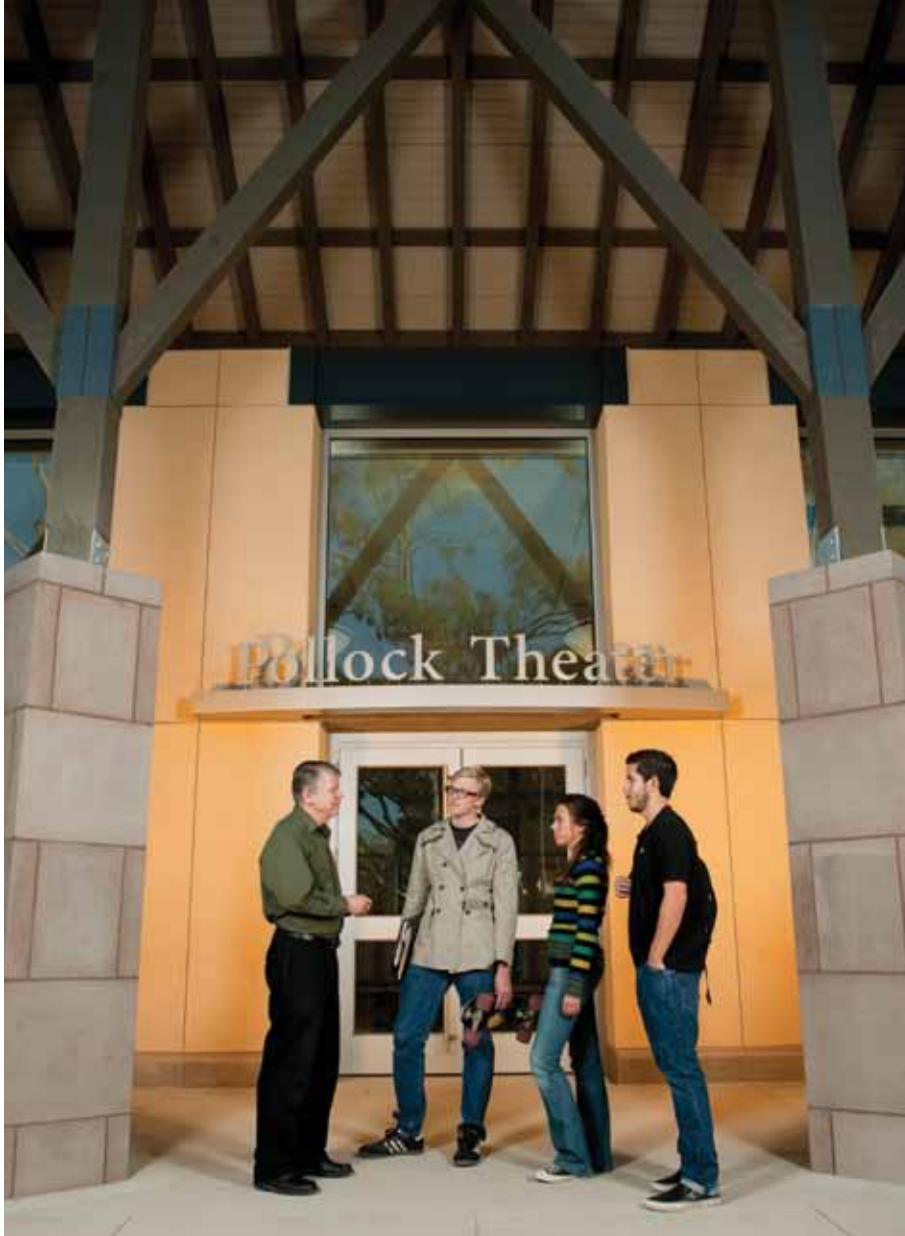
Energy researchers working in a campus clean room facility.



The electronic structure of the surface of Gallium Nitride, which is used as an enabling material in a new generation of high-efficiency solar materials, is pictured above.



John Bowers, director of the Institute for Energy Efficiency, is leading UCSB's efforts to develop new energy efficient technologies.



The Carsey-Wolf Center for Film, Television, and New Media has received \$1 million for public programming at the Pollock Theater, which is nearly complete. Film and Media Studies Professor Charles Wolfe talks to students at the entrance.



Carsey-Wolf Center Co-Director Constance Penley shows students where the new media wall will be located.

Enhancing Public Programming

Emmy Award-winning television producer Marcy Carsey has made a new \$1 million gift to the campus to expand her support for the Carsey-Wolf Center for Film, Television, and New Media. The contribution from her family foundation will enhance public programming at the center's Pollock Theater.

The 298-seat theater, which is nearing completion, will be a state-of-the-art media exhibition hall with

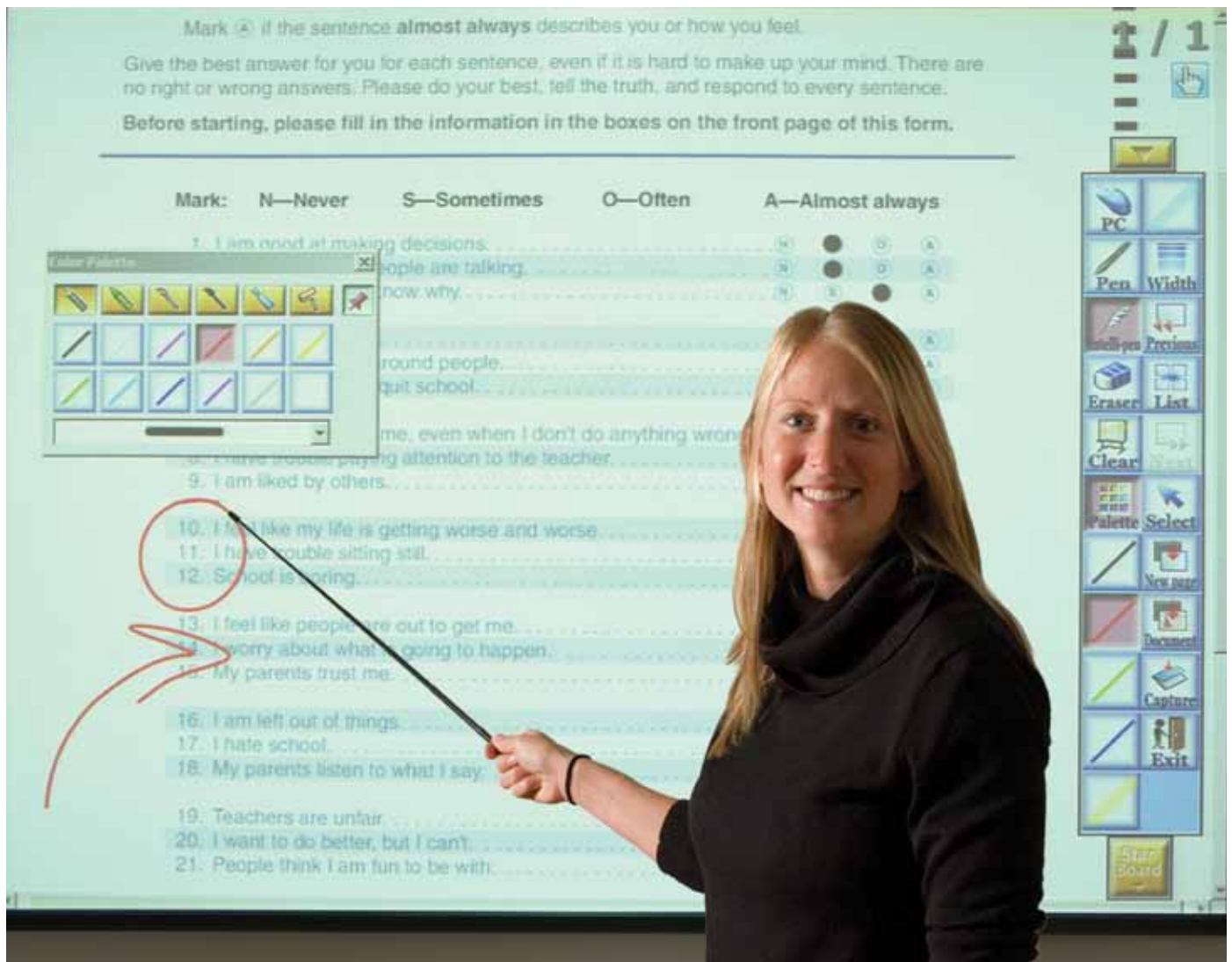
production facilities that will be used as a classroom and public theater.

The interdisciplinary educational and research center is named for Carsey and fellow Emmy Award-winning producer Dick Wolf. Both made generous contributions to UC Santa Barbara to establish a permanent home for the privately funded center in the campus's new Social Sciences and Media Studies Building.

An additional \$5 million in private

support is being sought for the Carsey-Wolf Center for physical enhancements, new equipment, programming, and to establish an endowment that will provide ongoing support for students, teaching, and research.

Carsey is a trustee of the UC Santa Barbara Foundation and an honorary alumna of the campus. She also serves as co-chair of the center's advisory board.



Hellman Fellow Erin Dowdy, assistant professor of counseling, clinical, and school psychology, is conducting research on the early identification of emotional and behavioral problems in schools. She demonstrates the use of a “smartboard” in the new Education Building.

Supporting the Promise of Distinction

The Hellman Foundation, led by Warren and Chris Hellman, has made a \$1 million gift to renew and expand its support of research by promising assistant professors across the disciplines “who show capacity for great distinction.” The Hellman Fellows program was established in 2008 with a \$250,000 gift from the foundation.

Nine UC Santa Barbara assistant professors were awarded Hellman Fellowships in 2009 to support their

research on a range of subjects, including autism, American music icon Charles Ives, entertainment empires, plant and animal species extinction, improving the health of college students, and the early identification of and intervention with “at risk” students. The prestigious awards are designed to assist junior faculty early in their careers before first grants are obtained. The maximum Hellman Fellowship award is \$50,000, and must be used before consideration for tenure.

Recipients are: Paul Atzberger, Mathematics; Philip Babcock, Economics; Bradley Cardinale, Ecology, Evolution, and Marine Biology; Erin Dowdy, Counseling, Clinical, and School Psychology; Jennifer Holt, Film and Media Studies; Skirmantas Janusonis, Psychology; Marek Kapicka, Economics; David Paul, Music; and Matthew Quirk, Counseling, Clinical, and School Psychology.

Exploring the Universe

A planned global telescope network has established a new observatory in UC Santa Barbara's Sedgwick Reserve in the Santa Ynez Valley. The 32-inch telescope will create a "gateway to science" for K-12 students and extraordinary research opportunities for UC Santa Barbara astrophysicists and students.

The observatory is part of the Las

Cumbres Observatory Global Telescope Network that, when complete, will link telescopes around the world, creating an uninterrupted, 24-hour-a-day view of the night sky. The network's programmable telescopes are equipped for imaging in different colors, and all their data will be remotely accessible via the Internet.

The Sedgwick observatory is named in memory of Laurie Nelle Byrne, who served as a docent at the reserve, and

in honor of the Byrne family. Over the years, the family's foundation has supported infrastructure improvements at the 5,900-acre expanse of fields, canyons, and woodlands that are preserved for teaching and research as part of the University of California's Natural Reserve System. UC Santa Barbara physicists are engaged in docent training at the Byrne Observatory.



The new Byrne Observatory at the Sedgwick Reserve is part of a planned global telescope network that will provide extraordinary research opportunities for UCSB astrophysicists and students and educational opportunities for K-12 students.

Pioneering a New Field

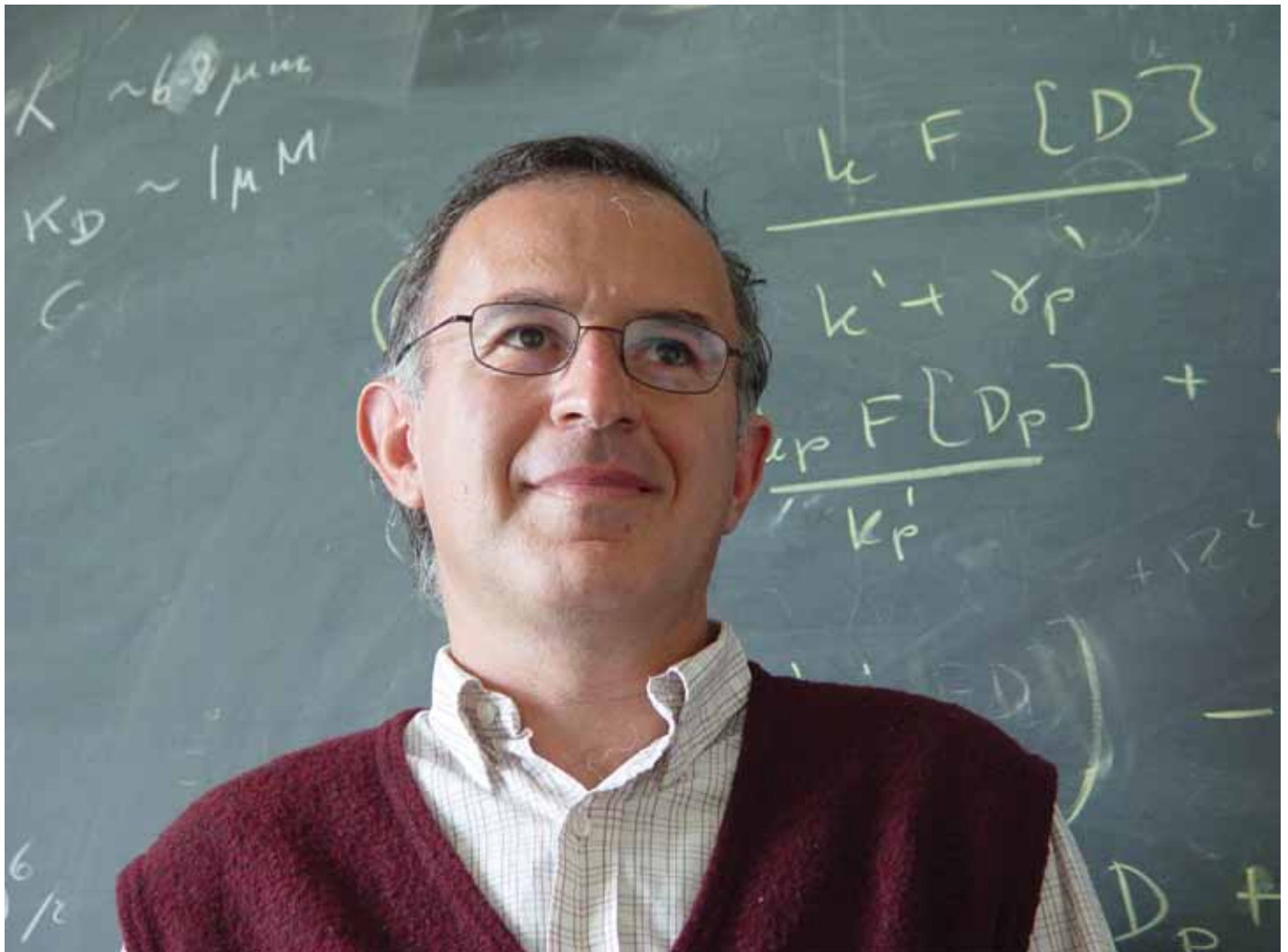
UC Santa Barbara has received a \$1 million gift from alumnus John Gurley and his wife, Meg, to establish an endowed chair in theoretical physics and biology at the Kavli Institute for Theoretical Physics (KITP). The Susan F. Gurley Chair, which is named in memory of Gurley's mother, has been awarded to Boris Shraiman, a permanent member of the institute.

Shraiman joined the campus faculty in 2004. With broad research interests in theoretical physics and biology, he has made significant contributions in a number of fields ranging from correlated electron systems to pattern formation and turbulence. His current research uses

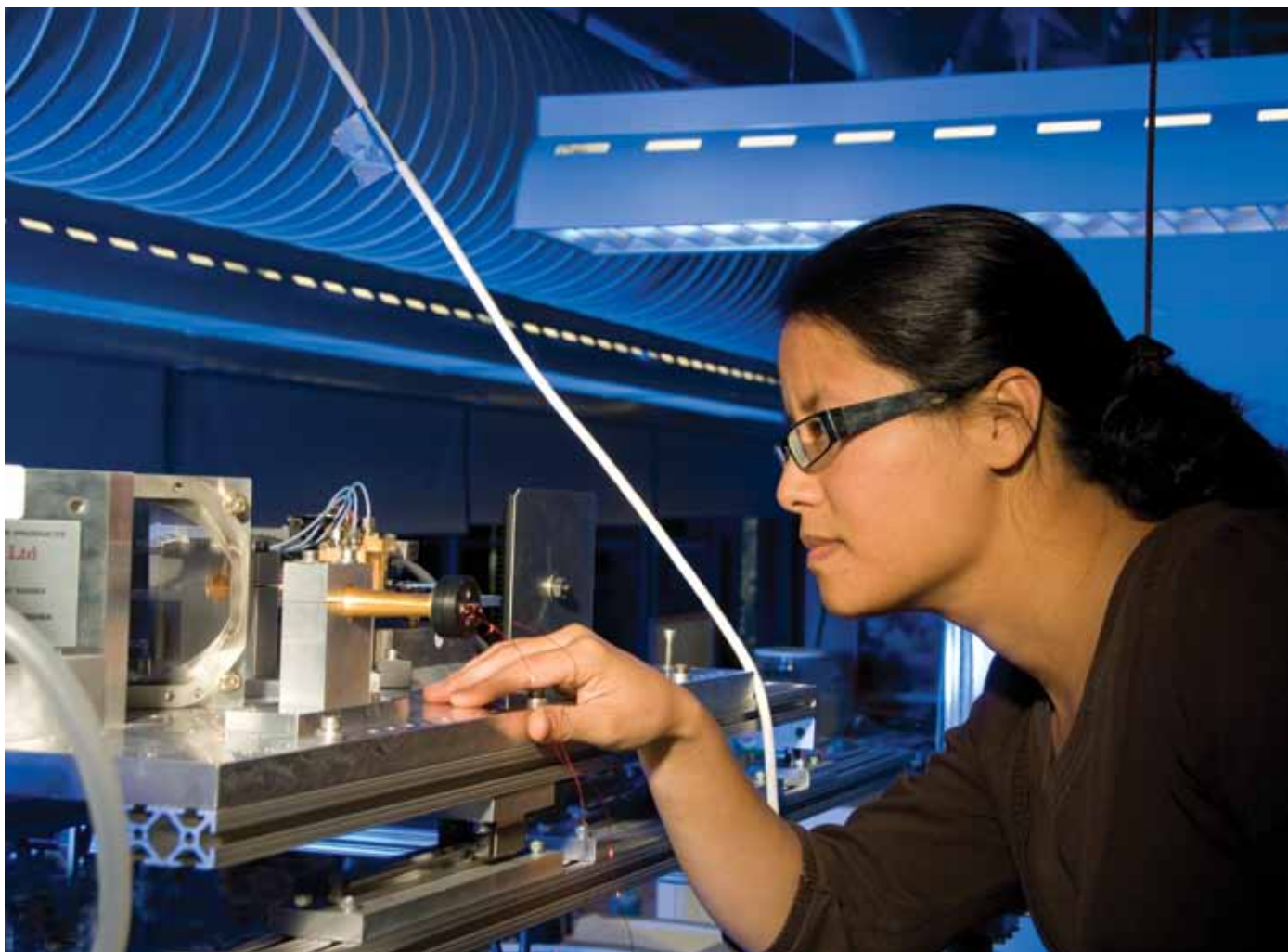
physics ideas and approaches to study biological systems.

John Gurley, a successful entrepreneur, earned a bachelor's degree in physics and a master's degree in scientific instrumentation at UC Santa Barbara. He serves as a member of the Directors Council at the Kavli Institute. For his pivotal role in helping to establish the new field of theoretical biology, Gurley has been named a Senior Fellow of the KITP.

Additional endowed chairs established in 2008-09 were the Glen and Susanne Culler Chair in Computer Science and the Doluca Family Chair in Electrical and Computer Engineering.



Boris Shraiman is the first recipient of the Susan F. Gurley Chair in Theoretical Physics and Biology at the Kavli Institute for Theoretical Physics, which brings together renowned international theoretical physicists to advance research in the field.



Song-I Han, assistant professor of chemistry and biochemistry, is one of 20 “most promising science and engineering researchers at U.S. universities” to receive a Packard Foundation Fellowship for Science and Engineering, which will support her research in developing new magnetic resonance methods with enhanced imaging capability.

Advancing Scientific Discovery

Song-I Han, a distinguished assistant professor in UCSB’s Department of Chemistry and Biochemistry, has been awarded a prestigious David and Lucile Packard Foundation Fellowship for Science and Engineering that will provide \$875,000 in research funding over five years. Han was one of 20 “most promising science and engineering researchers at U.S. universities” to be so honored.

The Packard award will support her research in developing new magnetic resonance methods with enhanced

sensitivity and imaging capability. In addition to developing state-of-the-art biophysical instrumentation, her research addresses questions such as what drives Alzheimer’s-related proteins to aggregate as brain deposits, and how proteins fuel marine bacteria using sunlight.

The Packard Fellowship program is among the nation’s largest nongovernmental programs to provide funding for unusually creative researchers early in their careers to pursue innovative solutions to major scientific challenges.

Han received her doctoral degree in natural sciences from the Aachen University of Technology in Germany. Prior to joining the UC Santa Barbara faculty in 2004, she pursued postdoctoral studies at the Max-Planck Institute for Polymer Research and at UC Berkeley.

Her previous honors include the Camille and Henry Dreyfus New Faculty Award and the National Science Foundation Faculty Early Career Development Award.

Recognizing Distinction

Private gifts are increasingly important in maintaining the quality of UC Santa Barbara's mission of teaching, research, and public service. Among the principal forms of private support are endowed chairs, which support the educational and research activities of distinguished members of the faculty.

The following generous benefactors have made permanent investments in UC Santa Barbara's future by establishing endowed chairs.

CAMPUSWIDE

Edward A. Dickson Emeriti Professorship

University of California Presidential Chair
Edward A. Dickson, Donor
Ursula Mahlendorf, Dickson Emeriti Professor

Duncan and Suzanne Mellichamp Academic Initiative Professorships, Cluster I (4)

Campuswide (Systems Biology Initiative, College of Engineering 2003-2018)
Duncan and Suzanne Mellichamp /MA '70, Donors
Cheryl Briggs, Mellichamp Professor of Systems Biology
Jamey Marth, Mellichamp Professor of Systems Biology

Duncan and Suzanne Mellichamp Academic Initiative Professorships, Cluster II (4)

Campuswide (Globalization Initiative, College of Letters and Science 2008-2023)
Duncan and Suzanne Mellichamp /MA '70, Donors
Janet Afary, Mellichamp Professor of Global Religion and Modernisms
Michael Curtin, Mellichamp Professor of Global and Media Representations
Jan Nederveen Pieterse, Mellichamp Professor of Transnational Civil Society Networks

University of California Presidential Chair II

Alan J. Heeger, Presidential Professor
2000 Nobel Prize in Chemistry

University of California Presidential Chair III

Michael Witherell, Presidential Professor

COLLEGE OF ENGINEERING

Eugene Aas Chair in Computer Science

Computer Science Department
Mark and Susan Bertelsen '66/'67, Donors
Christopher Kruegel, Eugene Aas Professor of Computer Science

ALCOA Chair in Materials

Materials Department
The Aluminum Company of America, Donor

Richard A. Auhll Professorship and Dean's Chair in Engineering

College of Engineering
Richard A. Auhll, Donor
Larry Coldren, Auhll Professor and Acting Dean

Cree Chair in Solid State Lighting and Display

Materials Department
Cree Inc., F. Neal Hunter, Umesh K. Mishra, and Steven P. DenBaars, Donors
Shuji Nakamura, Cree Professor of Solid State Lighting and Display

Glen and Susanne Culler Chair in Computer Science**

Computer Science Department
Zhu Family Foundation and Anonymous, Donors

Doluca Family Chair in Electrical and Computer Engineering**

Electrical and Computer Engineering Department
Tunc and F. Lale Doluca '81/, Donors

Fred Kavli Chair in Nanotechnology

College of Engineering
Fred Kavli, Donor
John Bowers, Kavli Professor of Nanotechnology

Fred Kavli Chair in Optoelectronics and Sensors

College of Engineering
Fred Kavli, Donor
Larry Coldren, Kavli Professor of Optoelectronics and Sensors

Edward Noble Kramer Chair in Materials Science

College of Engineering
Edward J. and Gail W. Kramer, Donors

Leadership Chair in Computer Science

Computer Science Department
Anonymous, Donor
Richard Kemmerer, Leadership Professor of Computer Science

Duncan and Suzanne Mellichamp Chair in Process Control

Chemical Engineering Department
Duncan and Suzanne Mellichamp /MA '70, Donors
Francis J. Doyle III, Mellichamp Professor of Process Control

Mitsubishi Chemical Corporation Chair in Functional Materials

College of Engineering
Mitsubishi Chemical Corporation, Donor
Glenn Fredrickson, Mitsubishi Professor of Functional Materials

Mitsubishi Chemical Corporation Chair in Solid State Lighting and Display

College of Engineering
Mitsubishi Chemical Corporation, Donor
Steven P. DenBaars, Mitsubishi Professor of Solid State Lighting and Display

Venkatesh Narayanamurti Chair in Computer Science

Computer Science Department
Karl and Pamela Lopker '73/'77, Donors
Xifeng Yan, Narayanamurti Professor of Computer Science

Warren and Katharine Schlinger Distinguished Professorship in Chemical Engineering

Chemical Engineering Department
Warren and Katharine Schlinger, Donors
L. Gary Leal, Schlinger Professor of Chemical Engineering

Donald W. Whittier Chair in Electrical Engineering

Electrical and Computer Engineering Department
The Mericos Foundation, Donor
Herbert Kroemer, Whittier Professor of Electrical Engineering
2000 Nobel Prize in Physics

Fred and Linda R. Wudl Chair in Materials Science

Materials Department
Fred and Linda R. Wudl, Donors

COLLEGE OF LETTERS AND SCIENCE

King Abdul Aziz Ibn Saud Chair in Islamic Studies

History Department
The Saudi Royal Family, Donor
R. Stephen Humphreys, King Abdul Aziz Ibn Saud Professor of Islamic Studies

Guenter and June Ahlers Chair in Experimental Physics

Physics Department
Guenter and June Ahlers, Donors

James and Sarah Argyropoulos Chair in Hellenic Studies

College of Letters and Science
James and Sarah Argyropoulos, Donors
Apostolos Athanassakis, Argyropoulos Professor of Hellenic Studies

José Miguel de Barandiarán Chair in Basque Studies

Spanish and Portuguese Department
Ministry of Culture of the Autonomous Basque Government in Spain and the Federation of Basque-Navarrese Savings and Loan, Donors

John Carbon Chair in Biochemistry and Molecular Biology

Molecular, Cellular, and Developmental Biology Department
Amgen Foundation, William K. Bowes, Jr. Foundation, Franklin and Catherine Johnson Foundation, and the Rathmann Family Foundation, Donors
Jamey Marth, Carbon Professor of Biochemistry and Molecular Biology

Virgil Cordano, OFM, Chair in Catholic Studies

Religious Studies Department
Charles Schwab, Charles and Harriet Burke, Richard and Marguerite Berti, and the Franciscan Friars, Donors
Ann Taves, Cordano Professor of Catholic Studies

Dorothy and Sherrill C. Corwin Chair in Music Composition

Music Department
The Sherrill C. and Dorothy Corwin Foundation, Donor
Clarence Barlow, Corwin Professor of Music Composition

The XIVth Dalai Lama Chair in Tibetan Buddhism and Cultural Studies

Religious Studies Department
Individuals, Foundations, and Corporations, Donors
José Ignacio Cabezón, XIVth Dalai Lama Professor of Tibetan Buddhism and Cultural Studies

Dehlsen Chair in Environmental Studies

Environmental Studies Program
James G. P. and Deanna C. Dehlsen, Donors
William R. Freudenburg, Dehlsen Professor of Environmental Studies

Robert and Patricia Duggan Chair in Organic Chemistry

Chemistry and Biochemistry Department
Mr. and Mrs. Robert W. Duggan, Donors

Ruth Garland Chair for the Director of the Center for Stem Cell Biology and Engineering

Mathematical, Life, and Physical Sciences
William K. Bowes, Jr. Foundation, Donor

Marsha and Jay Glazer Chair in Jewish Studies

Humanities and Fine Arts
Marsha and Jay Glazer Foundation, Donor

Alan J. Heeger Chair in Interdisciplinary Science

Mathematical, Life, and Physical Sciences
Ruth and Alan J. Heeger, Donors
Jean-Marie Tarascon, Heeger Professor of Interdisciplinary Science

Jeff Henley Chair in Economics

Economics Department
Jeff and Judy Henley '66/H '09, Donors
Finn E. Kydland, Henley Professor of Economics
2004 Nobel Prize in Economics

Lai Ho and Wu Cho-liu Chair in Taiwan Studies

East Asian Languages and Cultural Studies Department
Individuals and the Taiwanese American Foundation of San Diego, Donors
Kuo-ch'ing Tu, Lai Ho and Wu Cho-liu Professor of Taiwan Studies

Hull Chair in Women's Studies

Department of Feminist Studies
M. Blair Hull '65, Donor
Eileen Boris, Hull Professor of Women's Studies

Kundan Kaur Kapany Chair in Sikh Studies

Global and International Studies Program
Dr. and Mrs. Narinder S. Kapany, Donors
Gurinder S. Mann, Kapany Professor of Sikh Studies

E. Khashoggi Industries, LLC Chair in Letters and Science

College of Letters and Science
Essam and Layla Khashoggi, Donors
Galen D. Stucky, Khashoggi Professor

Louis G. Lancaster Chair in International Relations

Political Science Department
Winifred H. Lancaster, Donor
J. Benjamin Cohen, Lancaster Professor of International Relations

Luis Leal Chair in Chicana and Chicano Studies

Chicana and Chicano Studies Department
Individuals, Foundations, Corporations, and the Mexican Government, Donors
Maria Herrera-Sobek, Leal Professor of Chicana and Chicano Studies

Walter J. Mead Chair in Economics

Economics Department
Walter and Thelma Mead, Donors

Maxwell C. and Mary Pellish Chair in Economics

Economics Department
Colonel Maxwell C. and Mary Pellish, Donors
For Distinguished Visiting Professors

Aaron and Cherie Raznick Chair in Economics

College of Letters and Science
Aaron* and Cherie Raznick H '88, Donors
Theodore C. Bergstrom, Raznick Professor of Economics

J. F. Rowny Chair in Comparative Religions

Religious Studies Department
The Rowny Foundation, Donor
Catherine Albanese, Rowny Professor of Comparative Religions

J. F. Rowny Chair in Religion and Society

Religious Studies Department
The Rowny Foundation, Donor
Wade Clark Roof, Rowny Professor of Religion and Society

Arthur N. Rupe Chair in the Social Effects of Mass Communication

Communication Department
Arthur N. Rupe Foundation, Donor
Ronald E. Rice, Rupe Professor of the Social Effects of Mass Communication

Sara Miller McCune SAGE Dean of Social Sciences

Social Sciences Division
Sage Publications, Inc., Donor
Melvin L. Oliver, Sara Miller McCune SAGE Dean of Social Sciences

Arent and Jean Schuyler Chair in Environmental Studies

Environmental Studies Program
Jean K. and Arent H. Schuyler Jr. /'61, Donors
Carla D'Antonio, Schuyler Professor of Environmental Studies

*Deceased

**Pending approval

International Shinto Foundation Chair in Shinto Studies

East Asian Languages and Cultural Studies Department
International Shinto Foundation, Donor

Charles A. Storke II Chair in Ecology, Evolution, and Marine Biology

Ecology, Evolution, and Marine Biology Department
Charles A. Storke II,* Donor
William Murdoch, Storke Professor of Ecology, Evolution, and Marine Biology

Charles A. Storke II Chair in Molecular, Cellular, and Developmental Biology

Molecular, Cellular, and Developmental Biology Department
Charles A. Storke II,* Donor
Charles E. Samuel, Storke Professor of Molecular, Cellular, and Developmental Biology

Koichi Takashima Chair in Japanese Cultural Studies

East Asian Languages and Cultural Studies Department
Kyoei Steel Ltd., of Japan; Koichi Takashima, President and CEO, Donors
John Nathan, Takashima Professor of Japanese Cultural Studies

Anton Vonk Chair in International Security

Political Science Department
Anton Vonk, M.A. '05 and Diane Boss, Donors

Wilcox Family Chair in Biotechnology

Mathematical, Life, and Physical Sciences
Drs. Susan and Gary Wilcox '70/'69, Donors
Daniel E. Morse, Wilcox Professor of Biotechnology

Worster Chair in Experimental Physics

Physics Department
Bruce Worster, Ph.D. '71 and Susan Worster '70, Donors
John Martinis, Worster Professor of Experimental Physics

Susan and Bruce Worster Chair for the Dean of Science

Mathematical, Life, and Physical Sciences
Bruce Worster, Ph.D. '71 and Susan Worster '70, Donors
Pierre Wiltzius, Worster Professor, Dean of Science

DONALD BREN SCHOOL OF ENVIRONMENTAL SCIENCE AND MANAGEMENT

Donald Bren Dean's Chair in Environmental Science and Management

Donald Bren School of Environmental Science and Management
The Donald Bren Foundation, Donor
Steve Gaines, Bren Professor and Dean, Bren School of Environmental Science and Management

Donald Bren Distinguished Professorship in Corporate Environmental Management

Donald Bren School of Environmental Science and Management
The Donald Bren Foundation, Donor
Gary Libecap, Bren Professor of Corporate Environmental Management

Donald Bren Distinguished Professorship in Environmental Law and Policy

Donald Bren School of Environmental Science and Management
The Donald Bren Foundation, Donor

Donald Bren Distinguished Professorship in Interdisciplinary Environmental Science and Management

Donald Bren School of Environmental Science and Management
The Donald Bren Foundation, Donor

INTERDISCIPLINARY

Veeco Chair in Engineering and the Sciences

College of Engineering and Division of Mathematical, Life, and Physical Sciences
Veeco Instruments, Inc., Donor
Ania Bleszynski-Jayich, Veeco Professor of Engineering and the Sciences

RESEARCH INSTITUTES

Peter J. Clarke Chair for the Director of the California NanoSystems Institute

California NanoSystems Institute
Sputtered Films, Inc., a subsidiary of Tegal Corporation, Donor
David Awschalom, Clarke Professor and Acting Director of the California NanoSystems Institute

Frederick W. Gluck Chair in Theoretical Physics

Kavli Institute for Theoretical Physics
Frederick W. Gluck, Donor
David J. Gross, Gluck Professor of Theoretical Physics and Director, Kavli Institute for Theoretical Physics 2004 Nobel Prize in Physics

Susan F. Gurley Chair in Theoretical Physics and Biology

Kavli Institute for Theoretical Physics
John A. and Meg Gurley '78, MS '83/, Donors
Boris Shraiman, Gurley Professor of Theoretical Physics and Biology

Eleanor L. and Thomas J. Harriman Chair in Neuroscience Research

Neuroscience Research Institute
Eleanor L. and Thomas J. Harriman, Donors
Kenneth Kosik, Harriman Professor of Neuroscience Research

Preparing the Next Generation of Scholars

Preparing the next generation of scholars is one of the primary purposes of a research university. UC Santa Barbara gratefully acknowledges alumni, trustees of the UC Santa Barbara Foundation, parents, faculty, friends, and organizations that have established endowed graduate fellowships with gifts of \$100,000 or more.

Guenter and June Ahlers Fellowship in Physics

Dr. and Mrs. Guenter Ahlers, Donors

Janet A. Alpert Fellowship in Economics

Janet A. Alpert '68, Donor

Mortimer Andron Fellowships in Economics

Dr. Mortimer Andron, Donor

Barpal Family Fellowship in the College of Engineering

Isaac and Margaret Barpal '68, '70, Donors

Jean Belin Fellowship in French and Italian

Robert H. Sommer,* Naomi Sommer,* and Tana Sommer-Belin, Donors

Bonderson Fellowships in Biomedical Engineering and Materials Engineering

Paul R. Bonderson Jr. and Sandra K. Bonderson, Donors

Broida-Hirschfelder Graduate Fellowship in the Sciences

Elizabeth S. Hirschfelder,* the Faculty Women's Club, and other Individuals, Donors

Catherine Bruce Fellowship for Financial Aid

Catherine Bruce* Estate, Donor

Carbon-Clarke Graduate Fellowship in Biochemistry and Molecular Biology

Anonymous, Donor

Chancellor's Graduate Fellowship

Anonymous, Donor

Steve and Sue Cooper Graduate Fellowship

Mr. and Mrs. Stephen E. Cooper '68, Donors

CSP Technologies Fellowship

Anonymous, Donor

Jack and Laura Dangermond Fellowship in Geography

Jack and Laura Dangermond, Donors

Brython Davis Graduate Fellowship

Brython P. Davis, Donor

Deckers Outdoor Corporation Fellowship for the Bren School

Anonymous, Donor

Jean Devlin Initiative Fund

Richard Auhll, Roy and Janet Hardiman '83, Perri Heinz-Harcourt '71, and other Individuals, Foundations and Corporations, Donors

Robert H. DeWolfe Teaching Fellowship in Organic Chemistry

Barbara B. DeWolfe,* Donor

Erna V. Fisher Trust Fellowship for Czech Music

Erna V. Fisher* Trust, Donor

Donald J. Fleisher Fellowships in Eco-Entrepreneurship

Donald J. Fleisher, Donor

French and Italian Fellowship Fund

Anonymous, Donor

Peter R. Fricker Fellowship for Post-Doctoral Studies in Music Composition

A. Helen and Peter Fricker,* Donors

Bernice and Karl Geiringer Music Fellowship

Ms. Bernice Geiringer,* Donor

Pat and Irving Glazer Graduate Fellowship in Jewish Studies

Pat and Irving Glazer, Donors

William Randolph Hearst Fund

The William Randolph Hearst Foundation, Donor

Islamic Studies Fellowship

H.R.H. Prince Mohammed bin Fahd bin Abdulaziz and the Saudi Royal Family, Donors

Dr. J Student Teacher Fellowship in Education

Individuals honoring Dr. Richard Jamgochian, Donors

Japan Bamboo Association Fellowship in Religious Studies

Japan Bamboo Association, Donor

Louis Lancaster Graduate Fellowship in Political Science

Mr. and Mrs. Louis Lancaster* H '89, Donors

Israel Levitan Memorial Fellowship in Art Studio

Mrs. Idee Levitan-Maxted,* Donor

Margaret P. Mallory Fellowship in Art History

Miss Margaret Mallory,* Donor

Margaret P. Mallory Fellowship in Music

Miss Margaret Mallory,* Donor

Sarah Miller McCune Fellowship in Communication Studies

Sara Miller McCune, Donor

Mendell Graduate Fellowship in Cultural Literacy

Mr. and Mrs. Steven C. Mendell '63, Donors

Anthony and Marion Menk Music Affiliates Graduate Fellowship

Mr. and Mrs. Anthony Menk,* Donors

Mitsubishi Chemical Fellowship in Chemical Engineering

Mitsubishi Chemical Corporation, Donor

Mitsubishi Chemical Fellowship in Materials

Mitsubishi Chemical Corporation, Donor

Kenneth Pai Graduate Fellowship in Chinese Studies

Bruce G. Wilcox '77, Donor

Rathmann Graduate Fellowship in Mathematical, Life, and Physical Sciences

William and Ute Bowes, Catherine and Franklin Johnson, Jr., and other Individuals, Foundations, and Corporations, Donors

Bruce Rickborn and Ross Johnson Graduate Fellowship

M. Ross and Charlotte Johnson '70, Donors

Warren and Katharine Schlinger Graduate Fellowship in Chemical Engineering

Warren and Katherine Schlinger Foundation, Donor

Harold and Hester Schoen Fellowship Fund

Harold and Hester Schoen,* Donors

Philip and Ada Siff Foundation Dean's Scholar Fund in Education

Siff Foundation, Donor

Emil Steck, Jr. Graduate Division Fellowship

Fredric E. Steck '67 and the Steck Family Foundation, Donors

Charles A. Storke II Fellowships in Biology

Charles A. Storke II,* Donor

Technology Management Graduate Program

Jeff and Judy Henley '66/H '09, Donors

Thormahlen Family Fellowship in Economics

William J. Thormahlen Family, Donors

John Tokuyama Memorial Fellowship

Mrs. Alice Tokuyama and Dr. Samuel Tokuyama /'69, Donors

Louis H. Towbes Graduate Fellowship

Mr. and Mrs.* Michael Towbes, Donors

UCSB History Associates Donald Van Gelderen Memorial Fund

Jo Beth Van Gelderen, Donor

Walsin Lihwa Electronics and Photonics Research Center Fellowship

Walsin Lihwa Corporation, Donor

Walsin Lihwa Electronics and Photonics Research Center Graduate Fellowships

Walsin Lihwa Corporation, Donor

Zytowski Fellowship in Music

Carl B. Zytowski, Donor

*Deceased

Honor Roll of Donors

Lancaster Society

UC Santa Barbara is grateful for the extraordinary support of our alumni, parents, friends, trustees of the UC Santa Barbara Foundation, corporations, and foundations who have contributed \$100,000 or more to the university over time. Through their commitment and leadership, these distinguished members of the Lancaster Society have helped build the university's reputation for teaching, research, and public service. The Society is named for Louis and Winifred Lancaster, civic-minded philanthropists deeply committed to the public partnership that is at the heart of UC Santa Barbara. During their lifetimes, they helped establish the UC Santa Barbara Foundation and worked tirelessly to build meaningful bridges between the university and the larger community. Their vision is sustained through the loyal generosity of today's members of the Lancaster Society, celebrated for their contributions to an enduring foundation for excellence at UC Santa Barbara.

Lancaster Society Builders

**CUMULATIVE DONORS
\$25,000,000 AND ABOVE**

Individuals

Mr. Donald L. Bren
The Donald L. Bren Foundation
Mr. and Mrs. Paul Orfalea H '98
Orfalea Family Foundation

Organizations

Mentor Graphics
SAIC/Telcordia Technologies

Lancaster Society Leaders

**CUMULATIVE DONORS
\$10,000,000 TO \$24,999,999**

Individuals

Ambassador Don* and Marilyn Gevirtz /H '96
Susan Lord and Michael Kambitsch

Organizations

The Boeing Company
The John D. and Catherine T. MacArthur Foundation
The David and Lucile Packard Foundation
W.L. Gore & Associates, Inc.

Lancaster Society Partners

**CUMULATIVE DONORS
\$5,000,000 TO \$9,999,999**

Individuals

Paul G. Allen
Vulcan Incorporated
Gretchan and Leonard Broom
Virgil Elings

Fred Kavli H '05
The Kavli Foundation
Professor and Mrs. Duncan Mellichamp H '09/MA '70
William R. Moran*
Ms. Betty Elings Wells

Organizations

Anonymous
American Cancer Society
The Carsey Family Foundation
Hewlett-Packard Company
W. M. Keck Foundation
The Andrew W. Mellon Foundation
Mitsubishi Chemical Corporation
Gordon E. and Betty L. Moore Foundation
National Science Foundation
Raintree Foundation
J.E. & Lillian Byrne Tipton Foundation

Lancaster Society Gold

**CUMULATIVE DONORS
\$1,000,000 TO \$4,999,999**

Individuals

Anonymous (7)
H.R.H. Prince Mohammed bin Fahd bin Abdulaziz
The Saudi Royal Family
Dr. and Mrs. Guenter Ahlers
Mr. Richard A. Auhll
Mr. Charles Den Bell*
Mark and Susan Bertelsen '66/'67
Ina Theresa Campbell*
Marvin Clarke* '51
Mr. and Mrs. Stephen E. Cooper '68/'69
Mr. Michael K. Douglas '68
Mr. and Mrs. Robert W. Duggan
Mrs. A. Helen and Mr. Peter Fricker*
Mr. Frederick W. Gluck
Meg and John Gurley /'78, '83
Judy and W. Roger Haughton '70/'69
Jeff and Judy Henley '66
Mr. F. Neal Hunter
Mr.* and Mrs. Robert Kirby /'51
Mr. and Mrs. Jon Lovelace
Harry Lucas, Jr.
Miss Margaret Mallory*
Dr. Walter and Mrs. Thelma Mead
Sara Miller McCune H '05
Kent Vining and Julie Ann Mock '70/'75
Margaret C. Mosher* H '92
The Samuel B. and Margaret C. Mosher Foundation



UCSB to host 2010 College Cup

Dr. Laurence Pilgeram
Dr. and Mrs. Joseph H. Pollock
Ann and Myron* Rice
Mr. Arthur N. Rupe H '08
Arthur N. Rupe Foundation
Warren G. and Katharine S. Schlinger
Mrs. Hester Schoen*
Mr. Charles R. Schwab
Mr. and Mrs. Francis Sedgwick*
Judith Cosdon Stapelmann and Jack Stapelmann '63, '65
Fredric E. Steck '67
The Fredric E. Steck Family Foundation
Mr.* and Mrs. Charles A. Storke II
Mr. Thomas Moore Storke*
Michael and Anne Towbes
Mr. Bruce G. Wilcox '77
Dick Wolf
Susan and Bruce Worster '70/'68, '71
The Worster Foundation
Drs. Linda and Fred Wudl

Organizations

Anonymous (6)
Agilent Technologies
American Chemical Society
The Amgen Foundation
Amgen, Inc.
The Annenberg Foundation
Arnold and Mabel Beckman Foundation
The William K. Bowes, Jr. Foundation
Burroughs Wellcome Fund
Cisco Systems, Inc.
Corning, Inc.
The Dana Foundation
Deckers Outdoor Corporation
The Camille and Henry Dreyfus Foundation, Inc.
E.I. Du Pont de Nemours and Company
Ford Foundation
Ford Motor Company
FPS Computing
Marsha and Jay Glazer Foundation
Hellman Family Foundation
Hewlett-Packard Company
Foundation for Research and Development in the Middle East
Larry L. Hillblom Foundation
Howard Hughes Medical Institute
Hughes Research Laboratories
IBM Research Division
IBM Corporation
Intel Corporation
Japan Pionics Company, Ltd.
Robert Wood Johnson Foundation
W. K. Kellogg Foundation
Lilly Endowment, Inc.
The Henry Luce Foundation
Marisla Foundation
The G. Harold and Leila Y. Mathers Charitable Foundation
Matsushita Electric Industrial Company, Ltd.
The McCutchen Foundation
The Mericos Foundation
Muscular Dystrophy Association
New Sense Group, Ltd.
The Bernard Osher Foundation
Panasonic Electric Works, Ltd.
The Pew Charitable Trusts
The Rockefeller Foundation
Rohm Company, Ltd.
SAGE Publications, Inc.
Santa Barbara Foundation
Silicon Valley Research
Alfred P. Sloan Foundation
Stanley Electric Company, Ltd.
Sumitomo Chemical Company, Ltd.
The TABASGO Foundation
Tegal Corporation
UCSB Alumni Association

UCSB Alumni Vacation Center
UCSB Associated Students
Veeco Instruments, Inc.
Zurich North America

Lancaster Society Blue

**CUMULATIVE DONORS
\$500,000 TO \$999,999**

Individuals

Anonymous (3)
Dr. and Mrs. Mortimer Andron
Jim and Sarah Argyropoulos
Dr. Peter Bancroft '41
Leinie Schilling Bard and Archie* Bard
Mr. Barry Berkus and Family
Anton Vonk and Diane Boss '05
Dan and Meg Burnham
Vernon I. and Mary Low Cheadle* H '90
David Kam W. Chu and Betty Y. Chu
Drs. John Carbon and Louise Clarke
Peter J. Clarke*
Mr. Paul Colombo
Applied EPI, Inc.
Mrs. Sherrill C. Corwin* H '91
Mr. John Vickers Crawford*
Mr. Thomas H. Crawford*
Mrs. Louise Lowry Davis*
Mr. and Mrs. James G.P. Dehlsen
Mrs. Barbara B. DeWolfe*
Lale and Tunc Doluca /'81
Dr. and Mrs. Jeffrey Dozier
Suzanne Duca '90
Theresa Wilson Flynn
Eleanor L. and Thomas J. Harriman
Dan Healy
Dr. and Mrs. Alan J. Heeger
Tara and George Holbrook
Marilyn and Milton* Honea
M. Blair Hull '65
Hull Family Foundation
James A. Jimenez*
Charlotte and Ross Johnson '70
Mrs. Idee Levitan-Maxted*
Dr. Bruce H. Lipshutz
Mr. Bruce Lombard*
Dr. and Mrs. Charles H. Markham
Col.* and Mrs. Maxwell C. Pellish '61
Alzera Todd McCoy
Helen and Robert Peteler
Aaron* and Cherie Raznick H '88
Lord Paul Ridley-Tree* and Lady Leslie Ridley-Tree
Howard Ruby
Arent and Jean Schuyler '61
Mrs. Jeanne C. Thayer
Dr. and Mrs. Theo Theofanous
Sharon and John Todd
Patricia Todd
Drs. Susan and Gary Wilcox '70, '74/'69, '72
Mr. John Cree Wilson III
Mr. Michael Grant Wilson
Mr. Stuart O'Melveny Wilson
Carl B. Zytowski

Organizations
Anonymous
American Economic Association
American Heart Association
Apple, Inc.
AT&T Bell Laboratories
Alias System Corporation
Eli and Edythe Broad Foundation
Calouste Gulbenkian Foundation
Cancer Center of Santa Barbara
Colorado State University
Cree, Inc.
The Dow Chemical Company
Dow Corning Corporation

H = Honorary Alumni * = Deceased

Katherine Esau* Trust
 Exxon Research and Engineering Company
 Friends of the UCSB Library
 The J. Paul Getty Trust
 The William T. Grant Foundation
 William and Flora Hewlett Foundation
 Hughes Electronics
 Kearney Foundation
 March of Dimes Birth Defects Foundation
 James S. McDonnell Foundation
 The Nature Conservancy
 Packard Humanities Institute
 The Michael Palm Foundation
 The Ralph M. Parsons Foundation
 Rhodia, Inc.
 Rowny Foundation
 Santa Barbara Cottage Hospital
 Shell International Chemicals B.V.
 The Philip and Aida Siff Educational Foundation
 The Spencer Foundation
 Sun Microsystems, Inc.
 Taipei Economic and Cultural Office
 The Tatman Foundation
 The Herman P. and Sophia Taubman Foundation
 Tektronix, Inc.
 Teledyne Scientific Company
 John Templeton Foundation
 Unilever Research
 Varian Associates, Inc.
 Whittier Family Foundations
 William Wyles Library Board
 WTF Fund
 Xerox Corporation

Lancaster Society

CUMULATIVE DONORS \$100,000 TO \$499,999

Individuals

Anonymous (13)
 Sara and Michael K. Abraham /'59
 Mr. Paul Abrams*
 Barbara and Bill Alhouse '50/'49
 Mr. and Mrs. Joseph Alibrandi
 Ms. Janet A. Alpert '68
 David and Lyn Anderson
 Christine and Donald Anderson
 Ms. Bluma Appel*
 Robert Arenz, Jr. '80
 Money/Arenz Foundation, Inc.
 Jody and John Arnhold /'75
 Mr. Stuart R. Atkins
 Mr. Edward Bancroft
 Virginia Bancroft*
 Dr. and Mrs. Leon O. Banks
 Ms. Carrie A. Barker*
 Isaac and Margaret Barpal '68, '70
 Bob and Carol Bason
 Mr. and Mrs. Frank Baxter
 The Baxter Family Foundation
 Gary and Mary Becker
 Wendy and Joel Bennett
 Mr.* and Mrs. Max D. Benton /'87
 Myrna* and Gerald Bernath
 Mr. and Mrs. Richard A. Berti
 Mr. Fritz E. Bischoff*
 Jill and John C. Bishop, Jr.
 Johan F. Blokker, Jr. '80, '84
 Sheila and Michael Bonsignore
 Catherine Bruce*
 Mr.* and Mrs. Charles Burke
 Dennis and Angelia Cagan
 Dr. and Mrs. James F. Case
 Virginia Castagnola-Hunter
 Castagnola Family Foundation
 Shing and Sheng-Yung Chang '75/'71

Vernon I.* and Mary Low Cheadle* H '90
 Dr. and Mrs. William G. Cheadle
 Rufina and Chiu-Shan Chen
 Shu-Ching and Edward Cheng
 David and Margaret Cole
 Miss Ursula Corning*
 The Vidda Foundation
 Mr. and Mrs. Bruce C. Corwin H '97
 Metropolitan Theatres Corporation
 Gayle and Craig R. Cummings '75/'72
 Jack and Laura Dangermond
 Environmental Systems Research Institute, Inc.
 Mr. and Mrs. James Dao
 Mr. and Mrs. Eugene Davidson*
 Mr. James G. Davidson '98
 Dr. and Mrs. Steven P. DenBaars
 Diandra de Morrell Douglas '82
 Carol and Harvey Eisenberg
 Barbara and Rune Eliassen
 Ms. Julia Collier Emerson
 Dr. Ky Fan
 Mrs. Maurice E. Faulkner
 Dr. Howard C. Fenton*
 Erna V. Fisher*
 Sallie and Paul Flum
 James R. Follis and Williard Ray Hurst
 Scott and Jennifer Frank '82
 Drs. Amanda Clark Frost and Frank Frost '64, '66/'55, '61
 Mrs. Patricia Gebhard
 Ms. Bernice Geiringer* H '01
 Mr. and Mrs. Gordon Getty
 Genevieve and Lew Geysler
 Steven and Deborah Ginder '71/'72
 Mr. and Mrs. Irving Glazer
 Mr. Paul F. Glenn
 Dr. Steven Humphrey and Mrs. Sue Grafton
 Patricia Gregory
 Mr. and Mrs. Rusty Gregory
 Norman and Jane Habermann
 Mr. and Mrs. Stephen Hahn
 Dr. and Mrs. Yoel Haller
 Roy and Janet Hardiman '83
 Mr. and Mrs. Andrew T. Hass, Jr.
 Dr. and Mrs. Theodore W. Hatlen H '93
 Dr. Stephen N. Hay*
 Juliane M. Heyman
 The Roger Himovitz Family
 Elizabeth S. Hirschfelder*
 Judith L. Hopkinson
 Mr. David Bermant* and Ms. Susan Hopmans
 The Bermant Foundation
 Mrs. Robert Ingle Hoyt
 Arianna Huffington
 Honorable Michael Huffington
 Walter and Sharon Iberti
 The Iberti Foundation
 Joan and Palmer Jackson
 Ellen and Steven Jackson
 Patrick Morrin and Janice Jagelski '87
 Catherine and Franklin Johnson, Jr.
 Tyrena and William Jones /'77
 Mr. and Mrs. Peter C. Jordano H '03
 Jordano's Inc., Pacific Beverage Company
 Eric Kanowsky
 Dr. and Mrs. Narinder Kapany
 Sikh Foundation, U.S.A.
 Kenneth Karmiole '68
 Harvey Karp
 Patricia and Keith Kedward
 Mr. and Mrs. James J. Keenan H '02
 Elaine and Herbert Kendall
 Mr. and Mrs. Essam Khashoggi
 Laura Killingsworth
 Lynn and Robert Koegel
 Dr. and Mrs. Walter Kohn
 Steven Lafferty '75



Collaborative learning

Mr. and Mrs. Louis Lancaster* H '89
 Dr. Eulah Laucks* '78
 The Laucks Foundation
 R. Marilyn Lee and Harvey Schneider '69
 George Lilly
 Carl and Jo Lindros
 Karl Lopker and Pamela Meyer Lopker '73/'77
 Dr. Francine Lotery
 Mrs. Verl S. Lutz*
 Stuart and Hannelore Mabon
 Bernadette and Timothy Marquez
 Mr. and Mrs. John Marren '85
 Mr. and Mrs. John Maximus*
 Mr. Kenneth P. Maytag
 Mr. and Mrs. Steven C. Mendell '63
 Mr. and Mrs. Anthony Menk*
 Dr. and Mrs. Robert S. Michaelsen*
 Dr. and Mrs. Umesh K. Mishra
 John Mithun
 Mithun Family Foundation
 William and Martha Mowry
 Michael A. Nachman
 Dr. Shuji Nakamura
 Margaret Nee and Family
 Janet Dunbar and Alex Pananides /H '06
 William and Kristen Parrish '73, '75/'89
 Philip and Sylvia Peatman
 Mary and Gust Perlegos
 Juanita Peterson*
 Kathryn Pollak*
 Jackie Schmidt-Posner and Barry Posner '70/'70
 Mr. Thomas J. Pritzker
 Mr. and Mrs. Michael Pulitzer
 Dr. and Mrs. Simon Raab
 Mr. and Mrs. Robert L. Raede, Jr. '80/'80
 Dean and Marion Ramstad
 Mr. and Mrs. Lynn P. Reitnouer '55/'54
 Dr. Andrea Rich
 Mr. H. Smith Richardson III
 Mr. George W. Rickey*
 Danelle Storm Rosati and Mario Rosati '77
 Mrs. Ruth S. Schaffner*
 Henry A. Schimberg
 Berta and Rudi* Schulte
 Mr. and Mrs. Mark J. Schwartz '84
 Mitchell Shernoff
 Mr. Hobart Skofield*
 Dr.* and Mrs. Fahad Somait '70, '72
 Tana Sommer-Belin
 Mrs. Lynette G. Fiqueras-Spievak and Mr. Jason Spievak '90/'90
 William and Carol Stensrud
 Dr.* and Mrs. John A. Stephens
 Dr. and Mrs. Robert M. Talley H '99
 Jim and Denise Taylor
 Daphne and Greg Tebbe

Nicholas L. Teti, Jr.
 Mr. and Mrs. William Thormahlen '77
 Mrs. Alice Tokuyama
 Mr. Don Tosti*
 Dr. Katharine W. Tremaine*
 Mr. Kenneth E. Trevey* '51
 Ms. Nicole Underwood
 Mr. and Mrs. Edward Valentine*
 Jo Beth and Donald* Van Gelderen
 Dr. and Mrs. Daniel Vapnek
 Mr. and Mrs. Robert L. Veloz
 Barbara Warren '08
 James Warren '76
 Vinitha Menon Watson and David Watson '99/'99
 Claudia and Alec Webster '75/'76
 Mr. Daniel Weinberg
 Ann and Philip White '84
 Ralph E. Wigger
 Janet and John Wilczak
 Richard Williams '59
 The Richard Williams Family
 Peter Wissner
 Mrs. Samuel A. Wofsy*
 Dr. and Mrs. Charles Douglas Woodhouse*
 Mr. Robert K. Woolf*
 Justina and Ming-Shian Wu
 Mr. Tomonori Yamada
 Toshiko Ushikama Memorial Fund
 Henry and Dilling Yang H '01
 Dr. Huican Zhu '00
 Barbara and Robert Zorich '72/'71
 Zanna and Richard Zulch /'82

Organizations

Anonymous (6)
 3M Foundation
 Abbott Laboratories
 Accelrys, Inc.
 Advanced Projects Research, Inc.
 AECOM
 Agilent Technologies Foundation
 Air Products and Chemicals, Inc.
 Allergan Foundation
 Allon Therapeutics, Inc.
 Aluminum Company of America
 Alzheimer's Association
 American Chemical Society
 American Council of Learned Societies
 American Educational Research Association
 American Health Assistance Foundation
 American Heart Association
 AMP Incorporated
 Amplimed Corporation
 Anritsu Company
 Applied Molecular Genetics
 Arcadia Design Systems, Inc.

Note: UCSB graduation years for joint donors are listed consecutively, for example: '71/'71



Campus rush hour

ARCO Foundation
 Arcus Foundation
 ArgusSenses
 The Association for the Cure of Cancer of the Prostate
 AT&T Bell Laboratories
 The Balm Foundation, Inc.
 Bay Networks, Inc.
 BHP Billiton
 Bialis Family Foundation
 Blue Moon Fund, Inc.
 The Boeing Company
 David Bohnett Foundation
 Albert and Elaine Borchard Foundation, Inc.
 Bosch Corporate Research and Development
 James S. Bower* Foundation
 BP America, Inc.
 Bristol-Myers Products
 Bruker Daltonik GmbH
 BSST
 Cadence Design Systems, Inc.
 California State University
 California Institute of Technology
 California Wellness Foundation
 Canadian Institute for Advanced Research
 Canadian Pacific Charitable Foundation
 Capitol Specialty Plastics, Inc.
 Catalytic Solutions
 Charitable Gift Fund
 Chevron Products Company
 Chevron U.S.A., Inc.
 ChevronTexaco
 Chiang Ching-Kuo Foundation
 Chicago Community Trust
 Jane Coffin Childs Memorial Fund
 Chiron Corporation
 Clorox Company
 Conexant Systems Charitable Fund
 Conservation International Foundation
 Convergent Technologies, Inc.
 Corning Incorporated Foundation
 The Council for Tobacco Research, U.S.A.
 Courtroom Television Network
 Depotech Corporation
 Dialogic Corporation
 Digital Equipment Corporation
 DSM Research
 Doris Duke Charitable Foundation
 Eastman Kodak Company
 Educational Advancement Foundation
 El Adobe Corporation
 Eli Lilly and Company
 Envision Systems, Inc.
 Epitronics Corporation

Equistar
 Ernst & Young Foundation
 Exxon Chemical Co-Paramix
 Exxon Mobil Foundation
 Fisher-Rosemount Systems, Inc.
 Ford Motor Company Fund
 Foundational Questions Institute (FQXI)
 Franciscan Friars
 Fuji Electric Company, Ltd.
 Furukawa Electric Company, Ltd.
 Bill and Melinda Gates Foundation
 GE Foundation
 GE Global Research
 Gill Foundation
 GlaxoSmithKline
 Godric Foundation
 Goethe Institute Los Angeles
 Google, Inc.
 Evelyn and Walter Haas Jr. Fund
 Haddad Family Trust
 Hamister Foundation
 The John Randolph Haynes and Dora Haynes Foundation
 The William Randolph Hearst Foundations
 Hewlett-Packard
 Hewlett-Packard Company
 Hewlett-Packard Laboratories
 Hewlett-Packard Logic Systems
 Hoechst Celanese Corporation
 Hoffman-La Roche, Inc.
 Honeywell, Inc.
 HopeLab
 Huawei Technologies
 Hughes Aircraft Company
 Hutton Foundation
 IBM Matching Grants Program
 IBM T. J. Watson Research Center
 ICI Group Technology
 ImmunoGen, Inc.
 Institute for the Study of American Religion
 The Institute for Advanced Study
 Instituto Camoes
 Intel Corporation
 International Fine Particle Research, Inc.
 International Foundation for Telemetry
 International Human Dimensions Programme
 International Shinto Foundation
 Intrawest Mammoth Corporation
 The James Irvine Foundation
 The Jacobs Family Foundation
 JDS Uniphase
 Johnson Controls, Inc.
 The Walter S. Johnson Foundation

Juvenile Diabetes Foundation
 Max Kade Foundation, Inc.
 The Henry J. Kaiser Family Foundation
 Barbara Ann Karmanos Cancer Institute
 Klein Bottle Youth Program
 Konarka Technologies
 Korea Advanced Institute of Science and Technology
 Kraft Foods, Inc.
 Kraton Polymers
 Kresge Foundation
 Samuel H. Kress Foundation
 Kyoei Steel Corporation
 La Centra-Sumerlin Foundation
 Lancaster Appointive Trust
 Las Cumbres Observatory
 Lorser and Helen L. Feitelson Arts Foundation
 Lucent Technologies
 The Chuan Lyu Foundation
 Macula Vision Research Foundation
 Mammoth Mountain Ski Area
 Marine Review Committee, Inc.
 The May Department Stores Foundation
 Mbanefo Charitable Foundation
 MC Research and Innovation Center, Inc.
 The Wendy P. McCaw Foundation
 Mediascope
 Merck and Company, Inc.
 Metropolitan Theatres Foundation
 Microsoft Research Limited
 Millipore Corporation
 Molecular Simulations, Inc.
 Montecito Bank & Trust
 Nanoelectronics Research Corporation
 NARSAD
 National Academy of Education
 National Action Council for Minorities in Engineering, Incorporated
 National Aeronautics and Space Administration
 National Fish and Wildlife Foundation
 National Geographic Society
 National Multiple Sclerosis Society
 National Park Foundation
 National Semiconductor
 National Trust for the Humanities
 NEC Corporation
 NEC USA, Inc.
 Neste Jacobs Corporate R&D
 Nestle Research Center
 Nippon Telegraph and Telephone
 NKD Company, Limited
 Nokia Incorporated
 Spencer T. and Ann W. Olin Foundation
 Orfalea Foundations
 Outhink
 Edwin W. Pauley Foundation
 PowerLight
 Procter & Gamble Company
 The Ceil and Michael E. Pulitzer Foundation
 QAD, Inc.
 QUALCOMM, Inc.
 The Rathmann Family Foundation
 Raychem Corporation
 Raytheon Company
 Research Corporation
 Resources Legacy Fund
 Damon Runyon-Walter Winchell Cancer Fund
 Russell Sage Foundation
 Saint-Gobain Ceramics & Plastics, Inc.
 Saint-Gobain Recherche
 Samsung Electronics Co., Ltd.
 Sandia National Laboratories
 Santa Barbara Bank & Trust
 Santa Barbara Museum Of Art
 Santa Barbara Remote Sensing
 Seismic Micro-Technology
 Semiconductor Research Corporation

The Edmund and Mary Shea Foundation
 Shell Development Company
 Shell Oil Company Foundation
 Shimadzu Corporation
 Silicon Valley Bank
 Smith Richardson Foundation
 Society for Conservation Biology
 Sony Corporation
 Southern California Edison
 Space Telescope Science Institute
 Starbuck, Tisdale and Associates
 Ruth and Milton Steinbach Fund, Inc.
 Stradling Yocca Carlson & Rauth
 The Stuart Foundation
 Sun Microsystems Foundation, Inc.
 Sun Microsystems, Inc.
 Synopsys, Inc.
 Taiwanese American Foundation of San Diego
 Telesis Foundation
 Texas Instruments
 The Times Mirror Foundation
 Tinker Foundation Incorporated
 Titan Pharmaceuticals, Inc.
 Diane and David Toole Foundation
 Toyota Motor Sales U.S.A., Inc.
 TRW Space and Electronics Group
 U.S.-Israel Binational Science Foundation
 UCSB Affiliates
 UCSB Music Affiliates
 University Art Museum Council
 University of Aberdeen
 Veeco Saint Paul, Inc.
 J. Craig Venter Institute
 Verizon Communications
 Verizon Foundation
 The Vidda Foundation
 The Wallis Foundation
 Andy Warhol Foundation for the Visual Arts
 Washington Mutual Bank Foundation
 Wege Foundation
 Wells Fargo Foundation
 Weyerhaeuser Company
 The Wharton Foundation, Inc.
 The Whitaker Foundation
 Whitehall Foundations, Inc.
 Wilburforce Foundation
 Wildlife Health Center Foundation
 The Dean Witter Foundation
 Xerox Corporation
 Xerox Foundation
 Xilinx, Inc.
 Yardi Systems, Inc.
 The Yosemite Foundation

Legacy Circle

The Legacy Circle honors alumni, friends, faculty, and staff who have included UC Santa Barbara in their estate plans through some form of planned gift. Membership in the society is conferred upon those who have communicated to the university their intention to make a gift through a bequest, charitable trust, charitable gift annuity, pooled income funds, life insurance, retirement fund, or a gift of property with a retained life estate. The following generous donors are providing the legacy of support with which UC Santa Barbara will continue to grow and excel.

Anonymous (4)
 Carol and Marshall Ackerman
 Dana Aftab '85
 Dr. and Mrs. Guenter Ahlers

Elizabeth Allred* '62
 Ms. Janet A. Alpert '68
 Christine and Donald Anderson
 Dr. and Mrs. Gregory S. Aposperis /'66
 Ms. Bluma Appel*
 Dr. and Mrs. Stuart Atkins*
 Drs. John and Janice Baldwin /'82, '84
 Dr. Peter Bancroft '41
 Virginia Bancroft*
 Leinie Schilling Bard and Archie* Bard
 Isaac and Margaret Barpal '68, '70
 Dr. and Mrs. Steven J. Bartlett '68/'68,
 '70
 June Behrens '47
 Mark and Susan Bertelsen '66/'67
 Mr. George Bernard
 Dr. Denise Bielby
 Dr. William T. Bielby
 Ambassador Barbara K. Bodine '70
 Dr. Eric H. Boehm
 Ms. Helen R. Borges*
 Gretchan and Leonard Broom
 June and Todd* Brouhard '54
 Mr.* and Mrs. Charles Burke
 Mr. Brian M. Buxton '77
 Joseph and Nancy Byrne
 Jan and Roger Capps
 Vernon I.* and Mary Low Cheadle* H '90
 David Kam W. Chu and Betty Y. Chu
 Marvin Clarke* '51
 Marjorie Cole '64
 Nelson Culver*
 Mrs. Ruth Culver
 Mr. Burt L. Davis* '78
 Mrs. Louise Lowry Davis*
 Mr. Floyd M. Delvey '58
 Dr. and Mrs. Steven P. DenBaars
 Mrs. Barbara B. DeWolfe*
 Mr. and Mrs. William A. Dinsmore III
 '68/'68
 Mr. Dean W. Dorn
 Dr. and Mrs. Jeffrey Dozier
 Mrs. Alison Duncan Egus*
 Dr. Ky Fan
 Carl and Toby Feinberg
 Dr. Howard C. Fenton*
 Vasanti and Joel Fithian '60
 Mrs. A. Helen and Mr. Peter Fricker*
 Drs. Amanda Clark Frost and Frank Frost
 '64, '66/'55, '61
 Mr. Ben G. Gautier '41
 Mrs. Beverly J. Georgeou*
 Ambassador Don* and Marilyn Gevirtz
 H '96
 Lois and Frank Goodall '48/'51
 Dr. and Mrs. Chauncey S. Goodrich
 Marc Grossman and Mildred Patterson
 '73
 Mr. Daniel Haight '63
 Mr. and Mrs. Andrew T. Hass, Jr.
 Dr. and Mrs. Theodore W. Hatlen H '93
 Juliane M. Heyman
 Mrs. Ardis O. Higgins H '88
 Dr. and Mrs. R. Stephen Humphreys
 Susan C. Jamgochian '63, '81
 Bonnie and Richard Jensen /H '06
 James A. Jimenez*
 Norman Johnson*
 Kenneth Karmiole '68
 Ms. Vivian King '87
 Jeannie and Daniel Kutch, Jr. /'51
 R. Marilyn Lee and Harvey Schneider '69
 Jody Linick
 Mrs. Marjorie D. Linton* '56
 Mr. Bruce Lombard* '70
 Mrs. Gayle Lynds
 Caroline Street Maddock and Thomas
 Maddock '61
 Miss Margaret Mallory*
 York T. Mandra
 Jack* and Anthea Mannion

Ricki Vinyard Marder and David Marder
 '79
 Nancy McCagney '84, '91
 Betty F. McDermott '51
 Dr. Walter and Mrs. Thelma Mead
 Professor and Mrs. Duncan Mellichamp
 H '09/MA '70
 Sara Miller McCune H '05
 Kent Vining and Julie Ann Mock '70/'75
 Dr. Alfred Kummer Moir
 William R. Moran*
 Melvyn L. and Edwina L. Mortensen
 '63, '65
 Margaret C. Mosher* H '92
 The Samuel B. and Margaret C. Mosher
 Foundation
 Mr. Charles W. Nasser
 Mrs. Arnold Nordsieck*
 Dr. Jon A. Norman '70, '72
 George Oberrn*
 Dr. and Mrs. Thomas Payne
 Garie and Kenneth Perry
 Helen and Robert Peteler
 Dr. Laurence Pilgeram
 Dr. and Mrs. Joseph H. Pollock
 Ann and Myron* Rice
 Dr. Frank W.D. Ries
 Carla Roddy '69
 Leila Rupp and Verta Taylor
 Mr. and Mrs. Bernard Sandler
 Dr. and Mrs.* Robert A. Scalapino '40
 Dr. and Mrs. Richard Schamberg*
 Harvey and Hope Schechter '47
 Linda and Jeffrey Schlageter '65/'65, '67
 Mrs. Hester Schoen*
 Mrs. June H. Schuerch*
 Dr. and Mrs. Elman Service*
 Dr. and Mrs.* Alexander Sesonske
 Harriet and Henry Sharp
 Candace and David Short '67/'62
 Dr. Vera Skubic*
 Ms. Sally Andrews Sphar '73
 Judith Cosdon Stapelmann and Jack
 Stapelmann '63, '65
 Dr. and Mrs. Robert M. Talley H '99
 Mr. Don Tosti*
 Frank Velek* '64
 Carolyn Wack* '37
 Cyndi and Stephen Weeks /'71
 Dee White
 Mrs. Lawrence Willson*
 Ralph and Irene Wilson '70/'66
 Ms. Victoria Wing
 Mrs. Samuel A. Wofsy*



A student researcher

Chancellor's Council

The Chancellor's Council was established in 1975 by a core group of donors who believed that ongoing annual support was essential to building and maintaining excellence at UC Santa Barbara. Since that time, it has grown into the university's premier annual giving program, recognizing donors of \$1,000 or more. These gifts may be unrestricted, for use where the need is greatest, or restricted to support a specific department or program. UC Santa Barbara honors and celebrates alumni, friends, parents, and trustees of the UC Santa Barbara Foundation for their ongoing partnership and commitment to the future of this great university.

CHANCELLOR'S COUNCIL STORKE ASSOCIATES \$50,000 AND ABOVE

Anonymous (10)
 Dr. and Mrs. Guenter Ahlers
 Jody and John Arnhold /'75
 Stuart Atkins
 Mark and Susan Bertelsen '66/'67
 Anton Vonk and Diane Boss '05
 Mr. and Mrs. William K. Bowes, Jr.
 Eli and Edythe Broad
 Dan and Meg Burnham
 Mrs. Marcia L. Carsey H '04
 Karla and Peter Conmy '83
 Gayle and Craig R. Cummings '75/'72
 Jack and Laura Dangermond
 Lale and Tunc Doluca /'81
 Mr. Michael K. Douglas '68
 Mr. and Mrs. Joseph Dox
 Suzanne Duca '90
 Mr. and Mrs. Robert W. Duggan
 Linda Duttonhaver '77
 Margo Cohen-Feinberg and Robert
 Feinberg
 Scott and Jennifer Frank '82
 Marsha and Jay Glazer
 Dr. Steven Humphrey and Mrs. Sue
 Grafton
 Meg and John Gurley /'78, '83
 Margaret and Donald* Hamister '70
 Roy and Janet Hardiman '83
 Dr. and Mrs. Alan J. Heeger
 Jeff and Judy Henley '66/H '09
 Prince Moulay Hicham of Morocco
 Tara and George Holbrook
 M. Blair Hull '65
 Patrick Morrin and Janice Jagelski '87
 Harvey Karp
 Laura Killingsworth
 Marvel Blakeman Kirby '51
 Mark D. Linehan '85
 Dr. Bruce H. Lipshutz
 Kristin and William Loomis
 Dr. Francine Lotery
 Mr. and Mrs. Jon Lovelace
 Stuart and Hannelore Mabon
 Sara Miller McCune H '05
 Charles McCutchen
 Professor and Mrs. Duncan Mellichamp
 H '09/MA '70
 John Mithun
 Mr. and Mrs. Paul Orfalea H '98
 Mary and Gust Perlegos
 Warren G. and Katharine S. Schlinger
 Arent and Jean Schuyler '50, '61, '96
 Judith Cosdon Stapelmann and Jack
 Stapelmann '63, '65

Daphne and Greg Tebbe
 Dr. and Mrs. Theo Theofanous
 Michael and Anne Towbes
 James Warren '76
 Claudia and Alec Webster '75/'76
 Ms. Betty Elings Wells
 Mr. Bruce G. Wilcox '77
 Dick Wolf
 Susan and Bruce Worster '70/'68, '71
 Drs. Linda and Fred Wudl

CHANCELLOR'S COUNCIL TOWER ASSOCIATES \$25,000 TO \$49,999

Isaac and Margaret Barpal '68, '70
 Arlene and Barrie Bergman
 Johan F. Blokker, Jr. '80, '84
 Dina and Michael Burns /'78
 Gail and John Campanella
 James B. Cooper
 Gwen Eagleton
 Audrey and Timothy Fisher
 Daniel and Cara Geysler
 Genevieve and Lew Geysler
 Juliane M. Heyman
 Mr. Brian Hodges
 Lucille and Richard Janssen
 Tyrena and William Jones /'77
 Elaine and Herbert Kendall
 Robert Lovgren '62
 Mr. and Mrs. John Marren '85
 Marilyn and Richard Mazess
 Melissa and Stephen Murdoch
 Janet Dunbar and Alex Pananides /H '06
 Linda and David Peters
 Dr. and Mrs. Joseph H. Pollock
 Mr. and Mrs. Michael Pulitzer
 Lord Paul Ridley-Tree* and Lady Leslie
 Ridley-Tree
 Stanley K. and Betty W. Sheinbaum
 Fredric E. Steck '67
 Marsha and William Wayne
 Ann and Philip White /'84
 Janet and John Wilczak

YOUNG ALUMNI CHANCELLOR'S COUNCIL STORKE ASSOCIATES (UCSB alumni since 1998) \$25,000 AND ABOVE

Barbara Warren '08
 Dr. Huican Zhu '00

CHANCELLOR'S COUNCIL ASSOCIATES \$10,000 TO \$24,999

Anonymous (5)
 Ms. Janet A. Alpert '68
 Robert Arenz, Jr. '80
 Mr. Richard A. Auhll
 Christine and Darrell Baker
 Laurel and Thomas Barrack
 Gary and Mary Becker
 Jill and John C. Bishop, Jr.
 Dr. Eric H. Boehm
 Mary and Louis Cannon
 Virginia Castagnola-Hunter
 Shelley and Herbert Cole
 Mr. and Mrs. Bruce C. Corwin H '97
 Michelle and John Cowell IV '90
 Anna Curren
 Mr. and Mrs. James G.P. Dehlsen
 Mr. and Mrs. William A. Dinsmore III
 '68/'68
 Kathleen and Harold Drake
 Bettina and Glenn Duval /'80
 Jan and Brian Escalera
 Sandy Ewing
 Joyce and Garold Faber '85

Carol and John F. Fiacco
 Malin and Chris Fletcher '77
 Sallie and Paul Flum
 Dr. Peter C. Ford and Dr. Mary Howe-Grant
 Terri and Stephan Frenkel
 Debra and Dan Gerber
 Mr. and Mrs. Gordon Getty
 Steven and Deborah Ginder '71/'72
 Patricia Gregory
 Mr. and Mrs. Stephen Hahn
 Eleanor L. and Thomas J. Harriman
 James Heslin and Rose Hau '73
 Mr. Steven M. Hilton
 Marilyn and Milton* Honea
 Judith L. Hopkinson
 Dr. David Clarke and Dr. Evelyn Hu
 Heidi and David Huff '89/'89
 Robbyn and Michael Wadden '92
 Susan Jorgensen and Alice Gillaroo '74
 Anne and James Katzaroff '79/'81
 Julie and Jamie Kellner
 Franca and Moyses Kuchnir
 Steven Lafferty '75
 Maurie McGuire
 Mr. and Mrs. Steven C. Mendell '63
 Melissa and Kelly Monahan '79
 Loni and Paul Monahan
 Carmen Ortiz
 Katherine and Paul Page
 Richard Payne and Patricia Chiota
 Cynthia and Robert Pester '80/'79
 Aleisa and Michael Pfau
 Jackie Schmidt-Posner and Barry Posner '70/'70
 Milton Warshaw and Maxine Prisyon
 Shari and David Quinney '81
 Dr. and Mrs. Simon Raab
 Mr. Daniel H. Renberg
 Barbara Renteria and Ernesto Flores '77/'78
 Ann and Myron* Rice
 Kimberly Schizas and William Wood '77/'78
 Berta Schulte
 Mr. and Mrs. Mark J. Schwartz '84
 Susan and Daniel Semegen
 Mrs. Jeanne C. Thayer
 Mr. and Mrs. William Thormahlen '77
 Mrs. Alice Tokuyama
 Samuel Tokuyama '69
 Diane and David Toole '77/'77
 Jo Beth and Donald* Van Gelderen
 Dr. and Mrs. Daniel Vapnek
 Charu and Ram Venkataraman
 Christine and Ernst von Weizsacker
 Norm Waitt

Lisa and Howard Wenger '82/'82
 Richard Williams '59, the Richard Williams Family
 Gregg and Carol Wilson
 Jane Woodward '80
 Henry and Dilling Yang H '01
 Patricia and Joe Yzurdiaga
 Mr. and Mrs. Michael Ziering '78

**CHANCELLOR'S COUNCIL
 \$1,000 TO \$9,999**

Anonymous (19)
 Barbara and Stephen Abbott '65/'65
 Raydean M. Acevedo '73, '75
 Carol and Marshall Ackerman
 Dennis Adderton '92
 Lynda and Scott Adelson
 Lena and David Adishian '89
 Dana Aftab '85
 Jose Aguiar
 Patricia and Jim Aitchison
 Satinder and Harbhajan Ajrawat
 Krista and Yazdan Alami '97
 Stephen Albers '75
 June and Arthur Aldritt
 Linda and Paul Alex
 Jacqueline and Larry Alexander
 Olivia and Bill Allaway
 Dennis W. Allen '64
 Nathan and Linda Alvarado '82/'81
 Joan and Jack Amon
 Mr. and Mrs. Brent R. Anderson '70
 David and Lyn Anderson
 Christine and Donald Anderson
 Lorin Anderson
 Denise and Walter Anderson
 Ken and Beatrice Ando
 Joanne Ando
 Khashayar Anoosheh '85
 Judy and Bruce Anticouni
 Erik and Barbara Antonsson
 Jocelyn Antoon and Robert Algieri
 Meira Katz and Ezra Anzaruth
 Arcelia Arce '98
 Lucy and Ralph Archuleta
 Carin Marie Pacifico and Philip Wayne Arcuni
 Jim and Sarah Argyropoulos
 Frank Arlotti '76, '78
 Erika Johnson and Christopher Arnold '87
 Martha Arnold '68
 Rob Arnott '77
 Tracey Artiss
 Margaret and Howard Arvey
 Doug Asbury '82
 Prudence Ashley and Peter Harvey
 Richard Aster '63, '65
 Apostolos Athanassakis
 Michael Athans
 Carol Atkinson '84
 Tanya Atwater
 Kelly and Robert L. Avery
 Susan and John Axline
 Bitsy and Denny Bacon
 Stephanie Ball
 David Bancroft '73
 Daniele and Philip Barach
 Sharon and Sharyar Baradaran
 Mr. and Mrs. Jeffrey Barbakow
 Cheryl and Jim Barber '67/'66
 Leinie Schilling Bard
 Wendy and Larry Barels '71
 Kristi and Jeff Barens '87
 Virginia and Darryl Barrett '67
 Christine Mitchell and Ronald Bartell '73, '75
 Cecile Bartman
 David A. Bartman '94
 Barbara and John Bartman

Bob and Carol Bason
 Corrin and Eric Bates
 Robin and Peter Baugher
 Marie and Kent Baum '76
 Corby Baumgarten
 Rhonda and Richard Beaumont
 Connie and William Beckman
 Julia and John Begley
 June Behrens '47
 Jill and Arnold Bellowe
 Julie and Jon Belsha
 Joann and Stan Benson
 Michael Berger '70
 Barry and Jo Berkus
 Rod and Sharon Berle
 Donn R. Bernstein H '79
 Marlyn Bernstein
 Keith C. Berry
 Kathleen and Mark Berry '73
 Richard Berry '87
 Fred C. Best
 Marilyn Bettencourt '69
 Deepak Bhandarkar
 Ellen and Gary Bialis
 Wiltrudes Bibera
 James Bickell '84
 Walt Bies
 Dr. Gayle Binion and Dr. Dan Shackman
 Sue and Ed Birch /H '95
 Freda and Jeffrey Birdwell '75
 Jeffrey Birnbaum '87
 Cynthia Cory and K.C. Bishop '69
 Kimberly and Brad Bishop '78/'78
 Tao Bittman
 Bruce and Julie Black
 James and Sharon Blackwell
 Patricia and Richard Blake '69
 Gordon J. Block '70
 Kathy and Danvers Boardman '72/'71
 Richard and Deborah Bocci
 Joseph Boisse and David Williams
 Dr. Luis Bojorquez
 Lynn Bollengier '92
 Drs. Mark and Rochelle Bookspan '87
 Larry and Marjorie Booth
 Julie and James Borden '82
 Martino Borelli
 Mario Borgatello
 Kaydee and Dave Bork '94/'94
 Carol and Jay Borzi
 Raymond A. Bosch '62, '66
 Phil and Charlene Bosl '68/'69
 Suzanne Boucher and Andy Wagner '68
 Yoni Boujo
 Earnest Bouldin
 Mr. and Mrs. Roger Boulton
 Tricia and Tony Bourdakis
 Susan E. Bower '81
 Nancy and Michael Bowers
 Susan Bowey
 Bradford and Cathy Boyd
 Jillian and Jeffrey Boyd
 Kathy Boyd
 Stephen Bradley '83
 Patricia Bragg
 Bill Brashears
 Merna and David Braun
 Richard and Kathryn Breaux '67/'68
 James Brewer '92
 Karen and Peter Brill
 Joyce Brock
 Karen Brockwell and Alasdair Heath
 Roberta Bromberger
 Diane and Philip Brotherton '83
 Claudia and William Brown '79
 Carolyn and David Brown
 Dr. Gary H. Brown
 Mr. Glenn S. Brown '73
 Gwen Brown and Cameron Byrd '71
 Susan Haviland and John Brown
 Nancy M. Brown

Mr. and Mrs. Ralph A. Brown
 Gay and Anthony Browne
 Madgalyn Browning
 Drs. Thomas and Paula Bruice
 Judy and Michael Bruner
 Michele and Arnold Brustin
 Karen and Aaron Budgor
 Patricia and William Bullough '55, '67, '70
 Rebecca and Ernie Bumatay '71
 Ethel and Clifford Bunton
 Mary Burchill and Mark Maxson '76/'75
 Bonnie and Frank Burgess
 Harriet Burke
 Susan Taylor and Khephra Burns '72
 Richard Burns
 Andrew Busch
 Andrew Butcher
 Jack Buttery '67, '69
 Pia and John Byrd '79/'78, '93
 Ralph Cabrera
 Ann Cady Cooper '62
 Lisa and Dana Caledonia
 Annette and Richard Caleel
 Paulette and John Callahan
 John Camacho
 Paul Campbell
 Kathy and Steve Campbell '63/'63
 Susan and Kevin Canty
 Nancy Capelle '72
 Amanda and Philip Capin '80
 Jan and Roger Capps
 Alison and Donald W. Carlson '74
 Valerie and R. Mark Carney
 Amy Caron
 Donna and Dennis Carpenter
 Thomas Carpenter
 Barbara and Peter Carson
 Dori and Christopher Carter
 Christin Case
 Mary Casey and Craig Russell
 Michael Winter and Joelle Casteix '92
 Nell and Rollie Cavaletto '65
 Gina and John Cazort
 Mr. Edward Cella '93
 Kuen Chak
 Willy Chamberlin
 Jeffrey and Vivian Chapman '90
 Kathryn and Christopher Chase
 Nora Chavez
 Chris Cheatley
 Karen and Jas Chima
 Joan Chiota
 Chun-Kin Chow
 Doris and Joe Chow
 Karen and John Chrisman '86
 Janet Chrispeels
 David Kam W. Chu and Betty Y. Chu
 Caldecot Chubb
 Laurel Cleary and Mark Smith '76
 Michael Cleary
 Mr. Jeffery M. Cleghorn
 Judy Clifford
 Patricia and Benjamin Cohen
 Janemarie and Timothy Cohen '76/'76
 Berma and Patrick Colbert '75/'76
 Larry Coldren
 The Honorable Paul Cole and Mrs. Linda Cole '71
 Marjorie Cole '64
 Elaine Coles
 Beverly and John Colgate '69
 J. W. and Sue Colin
 Catharine and John Kristian
 Christine and William Collins '75/'75
 Randolph Collins
 Vardin and Robert Collins
 David Comer '74
 Mary and Richard Compton
 Sandy and Robert Comstock
 Sharon and Steven Comstock '74



Getting directions.

Peter Connelly '75
 Judy and Dan Contreras
 Jill and Layne Contreras
 Ronald Conway
 Marni and C. Michael Cooney '73/'66
 Mr. and Mrs. Stephen E. Cooper '68/'69
 Howard and Trudy Cooperman
 William Cornfield
 Rafael Costas '86
 Teresa and Dennis Costello /'83
 Dr. Anne Cushing and Dr. John Cotton
 Nelly and Russell Couch
 Robin Courts '81
 Carol and Arthur Courville
 Joanne and Jeremy Cowperthwaite /'80
 Janice and Bruce Coy
 Michael F. Coyle '88
 Joan and William Crawford
 Michelle Creason
 Kim Crites-Carloto
 Scott Crooker
 Dan N. Cross
 Anne and Arthur Crowe /'76
 Charles and Brynn Crowe '78
 Linda and Stephen Crowe
 Timothy Crowley
 John H. Cunningham and Evonne Jardine
 Leslie and Mike Cunningham
 Elizabeth Curry-Young
 James Curtice '70
 Lucie Curtiss
 Stewart and Louisa Cushman '93/'93
 Lauri and Michael Dahlin '78/'84
 Gary Dales '77
 Lan and Duy Quang Dang
 Ann Daniel
 Laurie and William Daniels
 Bill R. Danielson '73, '75
 David Darrow '83
 Tina and Killick Datta
 Barbara and Mark Daugherty
 Jean Davidson and Robert Feinstein
 Nancy and Roger Davidson
 Todd H. Davis '97
 Phyllis de Picciotto and Stan Roden
 Laurie Deans and Joe Medjuck
 Gene Sinsler and Patty DeDominic
 Michael DeDonker
 Janie and John Deleo
 Kim Delmonico
 Marie and Murray Demo '84, '85/'84
 Dr. and Mrs. Steven P. DenBaars
 Sandra H. Denhart '73
 Lisa and Albert DeSanti
 Kristen and Michael Desmond '90/'90
 Lisa and Scott Dettmer /'78
 Ian Devries '88
 Louis Dewitt
 Nicholas Di Domenico
 Angela Digilov
 Eloise Dilling
 Kathleen and James Doty '70/'71
 Sue Leslie Dougherty '94
 Elizabeth and Peter Downing '93/'74
 Angela and James Doyle
 Monica and Scott Draper '86/'87
 David R. Dresia '64
 Suzanne Drgon and Douglas Beach '89
 Patricia and James F. Drinkwater /'73
 Leslie and Marilyn Duman /'75
 Larry and Patricia Durham
 Maryel Duzan
 Jane and John Eadie
 Patricia Eagle-Schnetzer
 Jane Eagleton
 Delaine Eastin '69, '71
 Alan Ebenstein '82
 Louise Levien and Robert Eby
 Marguerite and Charles Eckberg /'70
 Laura and Philip Edmondson
 Mary and Lloyd Edwards '66/'71

Tracey Edwards and Morgan Hoff '74,
 '75/'75
 Ann and Eddie Einhorn
 Gary and Rebecca Eldridge
 Barbara and Rune Eliassen
 Grace and Ronald Elijah
 Jeanie Barbara Eline
 Dr. and Mrs. Eugene Ellis
 Linda and Doug Emery
 Robert and Christine Emmons
 Jerry Epstein
 Bev and Bill Erickson
 Gary E. Erickson '63
 Britta and Goran Eriksson
 Lorinda and Michael Esparza
 Doris and Tom Everhart
 Mary and Ray Evert
 Ann and Robert Eyd /'76
 Lori and Joseph Fabris
 Akef Fakhoury
 Anjanette and Brian Falk
 Melinda and Thomas Fallgatter /'69
 Leni Fe Bland
 Sydney Feeney '77
 Sharon and Harry Felder
 Rick M. Feldman
 Carol and Douglas Fell '64/'63
 Stacey and Ryan Fell '94/'94
 Kathy and John Fernbacher
 Betty and Gino* Filippin
 David Finkel
 Mitchell Finkelstein
 Laurie and Robert Fiori '92/'92
 Naomi Firestone
 Amy and Eric Fishburn
 Pat and James Fisher
 June B. Fisher
 Kris Miller-Fisher and Marc Fisher
 Dr. and Mrs. Michael Fisher
 Vasanti and Joel Fithian '60
 Miriam and Richard Flacks
 Dorothy and Stanley Flaster
 Mr. and Mrs. Garwin K. Fleming, Jr. '91
 William and Christine Fletcher
 Sharon and Theodore Flint
 Monica Florian
 Susan and Jeffrey Flory /'91
 Debbie and Timothy Foley
 Dr. William F. Foran and Mrs. Vivien F.
 Stanley-Foran
 Anabel Ford and Michael Glassow '74,
 '76, '81
 Ariel and Durand Ford '92
 Isabella and Roger Ford /'91
 Silas M. Ford
 Patricia and Dennis Forster
 Carole and Ronald Fox
 Connie and Michael Framberger
 Mr. and Mrs. Donald Fredericksen
 '52/'51
 Dr. Roger A. Freedman and Ms. Caroline
 Robillard
 Elizabeth A. French '78
 Dr. William Freudenburg and Mrs. Sarah
 Stewart
 Julie Friedman
 Valerie Friedman
 Lori Frisbie
 Rebecca Ward-Fruth and Steven Fruth
 Beth and David Fry
 Deryn and William Fulton
 Dr. and Mrs. Richard Fulton
 Ms. Sharon I. Furiya '85
 Elizabeth and Lee Gabler '77
 Frances and Richard A. Gadbois III /'79
 Mr. Charles Roehm and Mrs. Patricia
 Gainey /'67
 Verica and Zoran Gajic
 Diane Gale '85
 Mrs. Rebecca Zinn Gallaher and Mr.
 Brendan Haig Gallaher



Teaching enhanced by research

Maggie Gallant
 Gayle Penrod and Michael Galper /'82
 Carole and John Garand
 Mr. and Mrs. Ralph Garcia, Jr. '83/'85
 Dr. Yolanda M. Garcia '70, '72, '76, '93,
 '98
 Mr. and Mrs. William Garlock '71/'73
 Van H. and Virginia A. Garner '67/'67
 Stephanie and James Gaston
 Gail Mattson-Gates and Richard Gates
 Allyn and George Gaynes
 Mr. James P. Gazdecki '74
 Michael Gee
 Robert Gehlen '85
 Mr. and Mrs. William D. Geiger III /'81
 Mr. Barry M. Gellert '78
 Gail and Harry Gelles
 John* and Faith Geoghegan '59/'59
 Nancy and Dan George
 Stella Zadeh* and David L. Gersh
 Marianne and Paul Gertman
 Betty Gester
 Pat Mahony and Randy Getz '73/'73
 Marilyn Gevirtz H '96
 Gregory Geyer '94
 Mary and Dennis Ghan '74/'74
 John and Vi Gianaras
 Patricia and David Gibson /'65, '84
 Kathy and Stephen Gibson /'74
 Jennifer and Paul Gifford '83
 Diane Sklar and Wayne Gilbert /'74
 Lori and Tom Gilder '77/'75
 Susan and David Gill
 Ursula and Bradford Ginder '99, '03/'70,
 '71
 Barbara and David Giorgi
 Kathleen Uyeda-Gleason and Todd
 Gleason
 Nora and Marianito Gloriani
 Linda and Frederick Gluck
 Lola Goheen
 Cheryl and Michael Goldberg
 Nancy Goldberg
 Fay and Scott Goldman
 Alicia Goldsmith '82
 Helen Goodchild
 Michael and Fiona Goodchild
 Erline and Dexter Goodell '61, '87/'61
 Julia Kennedy and Eugene Gordon
 Drs. Linda and Arnold Gorin
 Michelle and John Gottbrecht
 Julia Haller-Gottsch and John Gottsch
 Mr. and Mrs. Richard A. Grant, Jr.
 Lea and Robert Grantham /'75
 Curtis and Sondra Graver '85
 Mr. Jeffrey W. Graver '93
 Karin Graver and Stepan Haytayan
 Paul Graziano
 Dr. Laura L. Butcher and Dr. Henry T.
 Greely

Ruth and David Green
 Dr. Judith L. Green
 Reesa Tansey and Gary Greenfield
 Renee and Mark Greenstein /'81
 Jody Greenwald
 Mr. and Mrs. Rusty Gregory
 Gary and Julie Greinke
 Gail and Michael Griesmer /'76
 Peter and Sandra Griffin '87
 Marc Grossman and Mildred Patterson
 '73
 Peter Grubstein
 Toni and Thomas Guckert '79/'79
 Dan Guerrero
 Kennen Guerrier
 Paul Guido
 Katherine and Daniel Gunther
 Lois and Richard Gunther
 Rajdeep Guraya '88
 Marilyn and Steven Gutsche /'71
 Lisa and Keith Guy
 Denise and Matt Guzik
 Norman and Jane Habermann
 Ann Hagerty
 Karen Lynn Haines
 Rene and Norman Hale /'71
 Dr. Lynne P. Hall '63
 Eva and Yoel Haller
 Beatrice Hallig
 Kathryn and Steve Hallock '80/'78
 Margo Halsted
 Dr. and Mrs. Rodman S. Hamer
 Janice and Stephen Hamill
 Mariam and Dennis Hansen
 Dr. Helen Hansma
 Linda Harbour
 Dr. and Mrs. Norris G. Haring
 The Harleen Family
 Barbara and Tom Harold
 Simone and Laurentius Harrer
 Jerry L. Harris '80
 Dr. and Mrs. Fred James Harris /'68
 William and Christy Hart '75
 Ruth and Gerald Harter
 Mr. and Mrs. Paul W. Hartloff, Jr.
 Susan and Burr Hartman /'72
 Jeffrey Hartman '81
 Kay Hartzell '70
 Mary Harvey
 Judy and W. Roger Haughton '70/'69
 Dr. Craig Hawker and Ms. Athena
 Philippides
 Robert Michael Hayes
 Jo Helen and Grant Heiken '70/'72
 Paul Heineken
 Ms. Geoffrey Heldoorn
 David Hendrickson '80
 Faith and Melvin Henkin
 Ms. Marjorie Henshaw
 Preston Hensley '69



Studying in the University Center.

Ann and Gary Herbert
 Stephen and Teri Herbst '81
 Lynne Hermle '78
 Lisa Hernandez
 Susan and Robert Herrera /'80
 Dr. Maria Herrera-Sobek
 Cecilia and Milton Hess
 Carol Hicks
 Linda and Steven Hicks '71/'70
 Steven High '86
 Richard Hill
 Mr. and Mrs. John A. Hinman III '71
 Betsy and Stephen Ho
 Dr. and Mrs. F.G. Hochberg, Jr. '65, '71
 Greg Hoeffliger
 Joanne C. Holderman
 Erin and Tim Holl '95/'95
 Mrs. C. Warren Hollister
 Susan Holmes and Persi Diaconis
 Roslyn and David Holtzclaw
 Donna and Daniel Hone
 Dr. and Mrs. Gary T. Horowitz
 Barbara and Steve Horstmann
 Maurine and Preston Hotchkis
 Clair and Gregory Howard '87
 Kathryn Anne Howe
 Pamela and Charles Huggins
 Cristina Hughes
 Christopher Scott Hulbard
 Dr. and Mrs. R. Stephen Humphreys
 Andrew and Doreen Hutton '83
 Stephanie Semler and Matthew
 Ingraham '00/'96
 Julianne and Eugene Inozemcev '94
 George Isaac
 Mrs. Margaret Mateer-Isaacs and Mr.
 Craig L. Isaacs '84/'84
 Mrs. Suzanne M. Iturriria-Alexander and
 Mr. William L. Alexander, Jr. '93
 Hollye and Jeffrey Jacobs
 Ms. Julie Jacobs '89
 Sara and John Jacobsen /'86
 Eve and Ross Jaffe '75
 Anne and Thomas Jagodits /'90
 Dr. Lynne Jahnke '81
 Alice Valdivia-James and Daniel James
 '78/'77
 Susan C. Jamgochian '63, '81
 Dr. and Mrs. Joseph J. Jankiewicz
 Mrs. Gina Laun and Mr. Joseph Jannotta,
 Jr.
 Marilyn and Jack Jenkins-Stark '71/'73,
 '76
 Ms. Holly P. Jennings
 Heidi Jensen and Ronald Winston '87
 Bonnie and Richard Jensen /H '06
 Kimberly Jepson
 Heather and Tom Jevens '88/'87

Caroline and Jon Jewett '86
 Ellen and Peter Johnson
 Sharyn Johnson
 Lynda Jones
 Martin Jordaen '84
 Mr. and Mrs. Peter C. Jordano H '03
 E and Eric Juline '68
 Cynthia and Douglas Kahl '91
 Ms. Georgia Vouraki and Dr. Ioannis
 Kanellakopoulos
 Lynn and Roger Karlson
 Kenneth Karmiole '68
 Martha and Peter Karoff
 Elyse and John Karow '86/'86
 Stephen and Lauren Katz
 Lynne and Ron Kaufman /'71
 Irene and Robert Kavanaugh /'61
 Fred Kavli H '05
 Mr. Herbert C. Kay
 Nicola Milne-Keating and Timothy
 Keating '81
 Deborah and John Keever '67/'67
 Madge Kelley '81
 Cheryl and Kevin Kelly
 Jim Kelly
 Michelle and John Kelly
 John Kelson
 Connie and Richard Kennelly
 Diana and James Kennett
 Madeleine Kern
 Linda and Michael Keston
 Meredith and Kenneth Khachigian
 '66/'66
 Dr. Hassan Khalil
 Lauri and Reza Khazraei
 Dr. and Mrs. Wayne R. Kidder
 Jane Kievit
 Teresa and Charles Kimbell
 Mr.* and Mrs. Raymond King Myerson
 Laura and Benjamin King /'94
 Gregory P. King '76, '80
 Mark Kinoshita '90
 Kyoko and Takashi Kiuchi
 Theresa Klass
 Daniel Kleeburg '86
 Mary and Gerald Klein
 Dr. Victoria E. Kline and Mr. Charles O.
 McBride, Jr.
 James and Janice Knight
 Alexis Upton Knittle and Lloyd Cook '70
 Kristen Koch
 R. Michael Koch and Jane A. Lee '89
 Lynn and Robert Koegel
 Mark and Carolyn Koenig
 Valerie and Frank Kohler
 Robert Kohn
 Barbara and Roger Kohn
 Radomir Kokotovic

Maria Druzhinina and Ilya Kolmanovsky
 Louise and Stephen Komp '63, '68
 Larry Koppelman and Nancy Walker-
 Koppelman
 Carol Kosterka '67
 Fumihiro Kozato '85
 Jeri and George Kozonis
 Susan and Brent Krantz /'81
 Jeanne and Arthur Krener
 Fred and Margie Kriebel
 Kerry Ann Krisher '81
 Gwen and Roger Krogen /'58
 Colleen and Norbert Krogstad
 Jack and Kay Krouskup '71/'71
 Angela and Miroslav Krstic
 Kurt and Sandy Kruger '82/'82
 Deborah Kruse
 Patricia and Peter Kruse
 Janet and Alan Krusi /'77
 David Kudrow
 Drs. Tonya and Finn Kydland
 Jo Ann Lach and Paul Smith '76
 Karen Lagorio
 Christopher Lal '95
 Richard and Peggy Lamb '72, '87
 Alicia Lancashire
 Margarita and Charles Lande
 Andrew Lane and Andrew Stern
 Richard Lane '73, '89
 Elly and Jim Langer
 Chhanseda and John Lanterman /'90
 Robert and Ellen Lawson '60/'59, '61
 Robert and Patricia Leamy
 R. Marilyn Lee and Harvey Schneider '69
 Elizabeth and Nathan Leight
 Gayle and Richard Leland
 Ruth and Jack Lemein '66
 Ann and James Lemke /'66
 Susan and Donald Lenz
 Nancy Lessner and Paul Glenn
 Diana Gonzalez-Levenstein and Kenneth
 Levenstein
 Ilan and Barbara Levi
 Rachel Levin
 Mark Levy '77
 Yen Chiung Liang
 James Lichter '86
 Carole Loeff
 Robert Loeff
 Christine C. Wong and Jeffrey T. Light
 George Lilly
 Lorraine Lim and Glenn Fout /'80
 Christopher Lincoln
 Carl and Jo Lindros
 Petrita and David Lipkin
 John Lippert '83
 Dr. George Lipsitz
 Dodie Little
 Renee and Craig Livingston '82/'82
 Anne and Richard Llewellyn '69/'69
 Michelle Lock
 Lisa Loiacono and Christopher Lloyd
 Diana and Richard Longoria
 Rafael Lao Lopez
 Dr.* and Mrs. Robert L. Lorden '49
 Roszanna and Vince Loung
 Margaret Curtice Lovig
 Robert and Barbara Lowes
 Michael and Diane Lowry '66
 Gene and Susan Lucas '73/'73
 Joann and Perry Lucero
 Anita Lui
 Edwin Lum
 Dr. Gordon C. Lundy and Mrs. Kerry
 Oliver-Lundy '80/'80
 Johanna Lunger
 Mr. Keith Lupton '90
 Eli and Leatrice Luria
 Catherine and Rob Lyman
 Christi Lynch '80
 Sandra Lynne

Dr. and Mrs. Noel C. MacDonald
 Mr. and Mrs. Kenneth J. Machado, Jr.
 Anita and Robert MacInnes '61/'61
 Sally MacIntyre and John Melack
 Lomena and Colm Macken
 Cynthia and Alan Macy /'83
 Catherine Fonseca de Madrid and Miguel
 Madrid
 John Majewski and Lisa Jacobson
 Timothy Malone '75
 James Maloney and Andrew Nance '84
 Steve Manasevit
 William Manderson '91
 Virginia Mariposa '79
 Dr. and Mrs. Charles H. Markham
 Bernadette and Timothy Marquez
 Craig Martin '76
 David Martin
 Frances and Angel Martinez
 Dr. Philip D. Martzen '73, '78
 Leo and Patricia Mascarenas
 Joan and Victor Matsumoto
 Sharon Mattern '65, '66
 Karen and Jerry Mattes
 Dr. and Mrs. James M. Mattinson '66/'64
 Deborah Yamamoto and Brian Mayhew
 /'79
 Claudia and John Mazurkiewicz /'73
 Linda and Jack McCowan /'70
 Nancy and James McCrary /'90
 Mrs. Beverly A. McCurdy '58
 James and Margaret McDermott
 Carol and Lon McEachern '84/'80
 Christina and Paul McEnroe '89, '93
 Natalie and Bruce McFadden
 Marni and J. Sears McGee
 Sheila and Frank McGinity
 Judy and Stephen McGrody
 Donna Christine and Michael McGuire
 Mrs. Anne McInnis '69
 Amanda and James McIntyre
 Kathryn D. McKee '59
 Ann Marie and Kraig McLeod
 Karen and James McLucas '81/'81
 Gloria and John McManus
 Norah and Bob McMeeking
 Mark McMorrow '82
 Marilynn and James McNamara '82/'85
 Brenda and Michael McNamara /'65
 Melanie and Chris McNeil /'86
 Sunne and John McPeak '70/'70
 Dr. Walter and Mrs. Thelma Mead
 Terri Meier '90
 Patricia and Bruce Meikle /'76
 Dr. William M. Meller '77
 Rachel and Jon Mello
 Mael and Sophia Melvin
 Virginia and John Merriam
 Karen and Michael Meryash
 Honorable Sharon Mettler and Steven
 Mettler
 Jennifer Kuenster and George Miers
 Janice and Dale Migliaccio
 Eleanor and Richard Miguez '64/'66
 Anne and Hale Milgrim '87
 Christine and Mark Miller
 Sharyne and Gene Miller
 Marlin and Ginger Miller
 Maureen and James Miller '78
 Constance and Andrew Minden '80
 Marion and Burt Minor '80
 Judy and Gregory Misbach /'69
 Mary Lou Misbeek '53
 Glen Mitchell
 Linda and Thomas Mitts
 Kent Vining and Julie Ann Mock '70/'75
 Wendy Wittl and Gregory Mohr '82/'76
 Dr. Alfred Kummer Moir
 Elise and Alexander Moir '84/'84
 Betsy von Summer-Moller and John
 Moller

Katie and Daniel Montgomery
 Jan M. Montgomery
 Jennifer and John Montin '75
 Darcie and Stephen Moore /'74
 Neil Moran and Lynn Duryee '77
 Robert Morefield
 Jeanette Morgan '89
 Tamara and Richard Morgenstern
 Mary and James Morouse
 Ronald Morris
 Chris and Ann Morrison
 Mary Morrison
 Pamela Morton
 Herman Warsh* and Maryanne Mott
 Barbara Moy
 Mr. Sam Mudie and Ms. Patricia Glaser
 Loretta and Dainius Mulokas
 Mandy and Charles Munger
 James Murphy
 Joan Murphy
 Kendall T. Murphy and Sarita Chawla '56
 Margie and Christopher Murray
 Nori Muster '78
 Frances and Bill Myers
 Deborah Myman
 Myra and Spencer Nadler
 Virginia and Robert Naeve
 Mr. John M. Nakata '78
 Eileen and William Nasif
 Ken Nathanson
 Dennis Neasi
 Marjorie and Paul Nefstead
 David Neshat '86, '88
 Delia and James Netto
 Amy Neukam
 Michele and Eric Neumann
 Mark Newman '77
 Sandi and William Nicholson
 Steven Nicponski
 Mrs. Barbara R. Nida '61
 Jeannine and Robert Nida '60/'62
 Marilee and Eric Nielsen
 Dale and Mike Nissenson
 Leila and Robert Noel '80
 Elizabeth and Michael Noling
 James Norris
 Theresa and Robert Norris /'74
 Timothy Nottoli '85
 Victoria Nourafchan and David
 Rosenstein '81
 Jennifer and Robert Nunez /'67
 Anette and Steve Nunn
 Susan Nunn '81
 Vivian Oborn
 Dennis O'Brien
 Jim O'Callaghan
 Katherine Sierra and Donal O'Connell '76
 Adrienne and John O'Donnell
 Mr. and Mrs. Donald D. O'Dowd
 Barbara Offerman
 Melinda and Larry Oliver
 Suzanne and Melvin Oliver
 Amy Olmstead-Allen '84
 Una Somerville and Scott Olsson
 Annette and Charles J. Orella /'80
 Sal Ornelas '70
 Gregory and Sandra Owen
 Steve Pacheco
 Althea Pachulski
 Julie Packard and Robert Stephens
 Marcus Padlan '95
 Louise and Stephen Pahl '77/'77
 Kathleen and Ralph Paige '71/'70, '72
 Jody Lou Paine '72
 Carolyn Palmer
 Christine and Marc Palotay '72
 Peter Pande
 Denise Stevens and Quentin Panek
 Mary and Norm Pattiz
 Lynn and Mel Pearl
 Carol and Paul Pease

Mark Peck '89
 Teri and Helmut Peindl
 Constance Penley
 Daulat and George Peponides
 Nancy and Lawrence Perillo '82/'82
 Joan and Roger Perlmutter
 Garie and Kenneth Perry
 Karen and Greg Peters
 Joy Dittberner and Thomas Peters
 '76/'73
 Robin and Gary Peyrot /'76, '79
 Laura Pham and Joshua New '97
 Jennifer Pharaoh and Terry Snyder '82
 Joseph Phillips
 Kimberly Phillips
 Anthony Pickett '87
 Arlene and David Pilling /'71
 Mr. and Mrs. B. H. Pilorz
 Karyn and Arthur Plank '76/'73
 Ann and Michael Pless
 Minie and Hjalmar Pompe Van
 Meerdervoort
 Peter Popoff '70
 Eileen and Mike Poppleton
 Mary Ellen and James Pratty
 Maria and David Prenatt
 David Prichard '81
 George Primbs
 Wendy V.C. Purcell and Kenneth L.
 Wilton '84
 Laura and James Putnam '71/'71
 Helen and Russell Pyne
 Marion and Michael Quinn
 Heidi and John Rabel
 Svetlozar Rachev
 Christopher Radich '81
 Mr. and Mrs. Robert L. Raede, Jr. '80/'80
 Karen Raff
 Monte Ragland '76
 Lauren Raisch
 Jess and Bonnie Rand
 Virginia and Perry Raso
 Mark Weiss and Liza Rassner
 Richard Redoglia and Diana Ashton
 '80/'80
 Lisa Reich and Bob Johnson
 Kathy and Ottis Reid /'64, '66
 Deborah and John Mackall '79, '86
 Barbara and Ron Reis
 Mr. and Mrs. Lynn P. Reitnouer '55/'54
 Joan Pascal and Ted Rhodes
 Valerie Rhodes
 Valeria and Paul Ricci
 Ilka and Jody Rice
 William Richards
 Faye and Jere Richardson
 Constance and William Ring
 Dr. Donald Talbot Rink
 Bicky and Steve Rippe /'71
 Victoria Riskin and David Rintels
 Roger and Mary Ritter '69

Drs. Scott and Shannon Rivenes '88
 Barbara and Ronald Robertson
 Barbara and Raymond Robins
 James and Martha Robinson
 Mark Robinson
 Christina and Scott Robinson /'87
 Michael Robles '88
 Howard Rochestie
 Lisbeth and Rick Rockhold '85
 Elizabeth and Richard Rogers
 Stephen Rogers
 Eileen and Walter Romanowski
 Mr. Kenneth Rose '85
 Susan J. Rose and Allan Ghitteman
 Deborah Rosen
 Gayle and Charles Rosenberg
 Linda and Lee Rosenberg
 Edwin and Bobbie Rosenblatt '77
 Meg Rosenfeld '67
 Jill Rosenkrantz '74
 Allison and Andrew Ross /'86
 Dr. and Mrs. Ian Ross
 Cissy and Richard Ross '04
 Molly Rosso
 Carol and Jesse Roth /'57
 Kate and Kenneth Rotman
 Ilene and Robert Rotstan
 Mary and Bert Rouleau
 Raymond Rubenstein '53
 Beth Rudin DeWoody
 Robert Rudnick
 Laura and Christopher Rulon-Miller '83
 Mr. Arthur N. Rupe H '08
 Alison and Geoffrey Rusack
 George Ruzznak
 Linda and Richard Ryu
 Mr. and Mrs. Joshua Sabah /'83
 Alice and Douglas Safford '85/'85
 Barbara and Anthony Safford '77
 Susan and Paul Sams /'92
 Magdalena Sanchez Vergara
 Mr. Jim A. Sanchez '78
 Janet and Ed Sands
 Donna Valerie and Mark Sauer
 Sylvia and Peter Sauer
 Josephine and Ken Saxon
 Mrs. Fern M. Sayovitz '50
 Diane and Douglas Scalapino
 Ethel and Howard Scar
 Francis and Karen Scarpulla
 Sylvia and Saul Schaefer
 Richard and Jennifer Schaible
 Mr. and Mrs. Richard L. Schall
 James S. Schallheim
 Harvey and Hope Schechter '47
 Linda and Jeffrey Schlageter '65/'65, '67
 Beryl Schlesenberg
 Nancy Schlosser
 Ms. Christiane Schlumberger
 Phyliss and Thomas Schmedake '84
 Jason J. Schneider '93

Naomi Schwartz
 Leslie Prussia and Fred Schwarzenbach
 /'79
 Flavia Traballe-Schwimmer and Michael
 Schwimmer /'83
 Ronda and Richard Scoby
 Byron and Stephanie Scordelis
 Diane and John Seadler
 Liliyan Cuttler and Bernad Seder
 David Seibold and Karen Myers
 Patricia and Jim Selbert
 Lorraine and Frank Serena '63, '75/'63
 Alexandra Seros '72
 Esther and James Servantes
 Rita Clinton and Henry Settle /'70
 Donna and Dana Severy
 Brad Sevier '86
 Dr. Ayesha Shaikh
 Jill and John Sheldon '93/'94
 Ross Sheldon
 Eddie Sheldrake
 Alex Sherer
 Markus Sherry
 Holly and Lanny Sherwin
 Mr. Matthew D. Shieman '80
 Dr. and Mrs. Joseph C. Shipp
 Candace and David Short '67/'62
 Stephanie and Fred Shuman
 Mr. and Mrs. Kent E. Sidney '88
 Katherine Sierra and Donal O'Connell '76
 Kate Silsbury and Beth Schneider
 Leigh and Todd Silva '92/'92
 Marie and Michael Silveira /'77
 Mr. and Mrs. Ralph Simmonds '78
 Carol and Howard Simon
 Stephen and Jacqueline Simons
 Gretchen and Jim Simpson '69/'69
 Christine and Franklin Sims
 Dr. Kirpal Singh
 Irina DeFischer and James Sinnott
 David and Heidi Skvarna '90
 Kenneth and Elizabeth Slaughter '79
 Patricia and Tim Smale '70/'78
 Connie Smith
 Angie and Craig Smith '94/'90
 Jay and Sally Smith
 Janice and Jeffrey Smith /'70
 Christina and Matt Snow /'92
 Jeffrey Snyder '85
 Ms. Mallory Fawn Sobel
 Roxanna and Randall Solakian /'74
 Marvin Solomon
 Heidi Solz and Roger Kerr
 Anita and Eric Sonquist
 Dr. and Mrs.* John Sonquist
 Carla Soracco
 Margo and Jim Sorenson /'66
 Robert Sorich
 Cecil and Jean Spearman
 Carole Lebbin-Spector and Phillip
 Spector /'72



The UCSB Symphony adds to the campus's cultural vitality.

Michelle and Steve Spelman '82
 Helene and Bill Spencer '69
 Sara and Theodore Spencer
 Cynthia and Eric Spivey '83/'83
 Marianne and Norman Sprague '69
 Deborah and Kenneth Sprouse '74
 Carol Spungen and Aaron Lieberman
 Mr. Morris Squire
 Jenny and Michael St. Mark
 Bridget and Thomas Standing
 Cheryl and Bjorn Steinholt
 Alan Steinman
 Diana and Herbert Stern
 Prudence and Robert Sternin
 Debra and Stephen Stewart
 Laura and Robert Stewart
 Nancy and Neil Stipanich
 Drs. Cynthia and Michael Stohl
 Danelle Storm Rosati and Mario Rosati
 '77
 Cathy and Bruce Straits
 Sharon and Donald Strauss
 Dwight Streit
 Paul Stumpf
 Rosann and Bruce Sutherland
 Ms. Mary J. Swalley
 Danielle and Charles Swanson '89/'90
 Mark Swartz '80
 Jody and Paul Sweet '69
 Art and Diane Sylvester
 Christine Talbott and John Galli '74
 Stephen Tamchin
 Lanlin Chen and Gang Tao
 Karim Tarter '86
 Barbara and Timothy Tasker '89
 Jim and Denise Taylor
 Leah and Robert Temkin
 Andrea and Roland Teoh
 Terri and Stanley Terada '85
 Nina and Rouben Terzian
 Jack Theimer
 Barbara and Douglas Thomas '76
 Mrs. Eleanor L. Thomas
 Les and Ellen Thomas '75/'78
 Lorrie Thomas
 Tom Anthony Thomas
 Tom and Mary Thomas
 Elena and John Thompson '89/'84
 Caroline and Steve Thompson
 Mr. George Thurlow and Ms. Denise
 Eschardies '73
 Grace and Bill Tiernay '52/'53
 Robin and Bruce Tiffney
 Konni and Kenneth Tittle '85
 Mr. David Titus '79
 Charles Nolan and Andrew Tobias
 Ann and Ron Tobin
 Rachel and Waldo Tobler '87
 Mr. Christopher J. Toomey
 Lisa and Mateo Toribio
 Barbara and Sam Toumayan
 Mary and Scott Tracy '72
 Ngoc Phuc Tran
 Vinh and Thinh Tran
 Cynthia Travis '74
 Matthew Trehub '92
 Timothy N. Tremblay
 Angela Renee Trenholm and Susan
 Romero
 Joyce Trevillian
 Jane Trigerio and Gregory Aker
 Bert and Tess Tritschler
 Cheryl and Benjamin Trosky
 Kristi Lee and David Tu
 Shirley and Kenneth Tucker
 Linda and John Tulchin
 Robert Tuler '78
 Bryan Tunney '82
 Tamara and Daniel Turner
 Lynda and David Turner '77
 Julie and Mike Turner '91

Sandra Scott-Tyler and Sam Tyler
 Linda Ulrich '83
 Thomas Umehofer
 Patricia and Joseph H. Utschig
 Paul Uyesaka
 Raquel Valenzuela
 Dr. Petra Van Koppen '79, '84
 Kathryn and Alan Van Vliet
 Debbie Green and Joseph Vargas
 Meera Venkataraman and A. Kasiraman
 '92, '93
 Dawn Vereuck '92
 Janet and John Vereuck
 Sara Viessman and Ronald Swinford
 Julie Ann and William Villa '77
 Sherry and Jim Villanueva
 Rodi and Stewart Vogel
 Mary and James Vogelzang
 Robert Voice
 Almeria and Timothy Vom Steeg '90/'89
 Mr. Michael A. Vorhaus
 Mr. and Mrs. Hubert Vos
 Denise and Greg Wagner
 Susan Aldrich Wagner and William
 Wagner
 Claire Wahrhaftig
 Mr. Bob Wailes
 Herbert Waite
 Ann and David Walker
 Sam and Shelley Walker
 David and Monica Walsh '82
 Lynn Walter
 Eric Wang '84
 Dr. and Mrs. Yulun Wang '82, '84,
 '88/'84
 Dr. Bronwen Brindley and Mr. John
 Warren '83, '85/'76
 Michael Warren
 Linda and Steve Wasserman
 Jodee and Todd Watanabe '88
 Mr. W. Wright Watling
 Milla Watts
 Drs. Lorraine McDonnell and Stephen
 Weatherford
 Drs. Leland and June Webb '63
 Ian and Louise Webb '59
 Ms. Jean Weidemann
 Nancy Weidenmiller '55
 Bernice and Louis Weider
 Vibeke and Joseph Weiland
 Lynn and Barton Weitzenberg '68
 James Wells
 Jane and William Wells
 Marilyn and David Wenner
 Mary and Jeffery Werbalowsky
 Patricia and Christopher Wesley
 Mary and Timothy Weston '69
 Dr. and Mrs. Albert D. Wheelon
 Nancy Unger and Donald Whitebread
 '77



Phoning home.

Melinda and Robert Wiederhold
 Mary and John Wiemann
 Sandra Wiggins
 Carol Wilburn and Charles McClintock
 Drs. Susan and Gary Wilcox '70, '74/'69,
 '72
 Eric Will '79
 Alice Willfong
 Mr. and Mrs. Craig Williams
 Nancy Englander and Harold Williams
 June and Knox Williams '59
 Ms. Marie J. Williams '89
 Robert Williams
 Ruth Williamson and Thomas McNulty
 '81
 Danielle and Melvin Willis '71/'68, '75,
 '03
 Kristin and Matthew Wilson '96/'95
 Ralph and Irene Wilson '70/'66
 Deborah Winant
 Ms. Victoria Wing
 Erik Wipf
 William and Marilyn Wirtz
 Beth and Michael Witherell
 Christel Bejenke and George Wittenstein
 Cami Ferris-Wong and Derrick Wong
 '94/'94
 Lieutenant Colonel Norman M. Wood,
 Retired '64
 Jennifer and Richard Wright '73
 Judith and George Writer
 Laura and Geof Wyatt
 Patrick and Christine Yam
 Setsuko and Leonard Yamamoto
 Julia Yarbrough '87
 Pamela Yarbrough
 Sharline Tillery Yates
 Andre and Tian Yew
 Susan and David Yossem
 Lisa and Alan Young
 JoAnne and Michael Young
 Elizabeth and Frederick Zarrilli
 Elsbeth and Alex Ziegler
 Leslie and Ernie Zomalt '64, '79/'66,
 '72, '89
 Patricia and Robert Zucherman

**YOUNG ALUMNI CHANCELLOR'S
 COUNCIL ASSOCIATES
 (UCSB alumni since 1998)
 \$5,000 TO \$12,499**

Bridget and Jock Bovington '09
 Neil DiPaola '06
 Robert Beckman '08

**YOUNG ALUMNI CHANCELLOR'S
 COUNCIL
 (UCSB alumni since 1998)
 \$500 TO \$4,999**

Jawad Abedi '07
 Robert L. Andersen '98
 Waheed Baqai '03
 Christopher Beardshear '06
 Garrett Brandenburger '03
 Jae Brattain '05
 Doryl Brooks '05
 Anthony Bussen '04
 Peter Caruso '03
 Abigail D'Ambrosia '09
 Zachary Davis '06
 Nicholas de Sieres '03
 Deborah and William Farthing '07/'82
 Michael Flood '01
 Martin and Julia Fornage '01, '03
 Nicole Framberger '05
 Ryan Hardy '00
 Konain Hasan '07
 Raul Hernandez '06
 Mr. Jason R. Hindelang '06

Albert Hwang '08
 Jason Inouye '00
 Miikka Kangas '03
 Lauren and Michael Kilbride '08/'79
 Steven and Lisa Koppenjan '86, '89/'01
 Lorri Lee Kwai '08
 Joshua Levine '05
 Scott Lindberg '07
 Jared Liu-Klein '05
 Samantha Lutz '10
 Eric Marlin '05
 Helene Marsh '04
 Danielle McComb '11
 Michael McGehee '99
 Benjamin Meyers '05
 Graciela Munoz '04
 Mr. Daniel J. Nevis '00
 Christopher Newell '05
 Mark Ninyo '08
 Eric Oddo '04
 James O'Dea '08
 Etuajie Oiyemhonlan '08
 Jessica Paulsen '01
 James Pearson '00
 Eliot Peters and Stephanie Haytayan
 Peters '00/'01
 Christian Peterson '11
 Joshua Riturban '04
 Amanda Rose '00
 Ryan Sanders '10
 Catherine Saunders '07
 Gary Scott '05
 Stephanie Semler and Matthew
 Ingraham '00/'96
 Harsh Singh '04
 Nehemiah Slaughter '08
 Alex Small '02, '05
 Jacob Sockolov '08
 Amanda and Joseph Sorena '02/'02
 Aaron Spafford '02
 Mr. Subramanian Swaminathan '02
 Ursula Szeles '09
 Alex Trebby '03
 Edmundo Vindel '06
 Elizabeth Wanger '89
 Scott W. Wells '00
 Wesley Wright '99
 Thomas Wu '00
 Jesus Zavala '03
 Dale Zurawski and Geoffrey Slaff '04

**FOUNDATIONS, ASSOCIATIONS,
 TRUSTS, ORGANIZATIONS, AND
 CORPORATE CONTRIBUTORS
 \$10,000 AND ABOVE**

Anonymous (12)
 Accelrys, Inc.
 Accenture Foundation, Inc.
 Advanced Intergrated Photonics Inc.
 AECOM
 Agilent Technologies Foundation
 Air Products and Chemicals, Inc.
 Allergan Foundation
 American Chemical Society
 American Council of Learned Societies
 American Heart Association
 Amgen, Inc.
 Apache Design Solutions, Inc.
 Arcus Foundation
 ATK Space Systems
 Edward and Gladys Baker Foundation
 Bank of America Foundation
 Bial Foundation
 The Boeing Company
 David Bohnett Foundation
 Albert and Elaine Borchard Foundation,
 Inc.
 Bosch Corporate Research and
 Development
 James S. Bower* Foundation

Brownstein Hyatt Farber Schreck
 Bruker Daltonik GmbH
 BSST
 Burroughs Wellcome Fund
 California Community Foundation
 Canadian Institute for Advanced Research
 Cancer Center of Santa Barbara
 Capital Group Companies, Inc.
 Catalytic Solutions
 Chevron Products Company
 Chrisso Corporation
 Cisco Systems, Inc.
 The Community Foundation
 ConMed Linvatec Corporation
 Conservation International Foundation
 Corning, Inc.
 Cree, Inc.
 Deckers Outdoor Corporation
 Deloitte Services LP
 Delta Psi Building Company
 Disney Research and Development
 The Dow Chemical Company Foundation
 The Camille and Henry Dreyfus Foundation, Inc.
 Doris Duke Charitable Foundation
 Eli Lilly and Company
 ENVIRON Foundation
 EOL Industrial Technology Research Institute
 Ernst & Young Foundation
 Faber Family Fund
 FLIR Systems
 Ford Foundation
 Ford Motor Company
 GE Foundation
 The J. Paul Getty Trust
 Gill Foundation
 Marsha and Jay Glazer Foundation
 Google, Inc.
 The Grammy Foundation
 Evelyn and Walter Haas, Jr. Fund
 Heal the Ocean, Inc.
 The Heinz Center
 Hellman Family Foundation
 Hess Foundation
 William and Flora Hewlett Foundation
 HRL Laboratories, LLC
 Huawei Technologies
 IBM T. J. Watson Research Center
 Infineon Technologies
 Institut Ramon Llull
 Intel Corporation
 International Fine Particle Research, Inc.
 International Foundation for Telemetering
 The James Irvine Foundation
 Irvine Ranch Conservancy
 Istituto Italiano Di Cultura
 Robert Wood Johnson Foundation
 The Walter S. Johnson Foundation
 JSR Corporation
 Max Kade Foundation, Inc.
 Kearney Foundation
 Kern Community Foundation
 Kresge Foundation
 Las Cumbres Observatory
 Donald T. Leahy Charitable Lead Trust
 Limoneira Company
 The Henry Luce Foundation
 The John D. and Catherine T. MacArthur Foundation
 Macula Vision Research Foundation
 Mammoth Mountain Ski Area
 March of Dimes Birth Defects Foundation
 Marisla Foundation
 MediaTek USA, Inc.
 Mentor Graphics
 Merck and Company, Inc.
 Meyer Sound Laboratories, Inc.
 Microsoft Research Limited



The process of discovery

Millipore Corporation
 Mitsubishi Chemical Corporation
 The Samuel B. and Margaret C. Mosher Foundation
 NARSAD
 National Academy of Sciences
 National Research Council
 National Trust for the Humanities
 Neurological Health International
 Nokia Incorporated
 The Kenneth and Eileen Norris Foundation
 Northrop Grumman Foundation
 Northrop Grumman Space & Mission System Corporation
 NovaCoast
 Orfalea Foundations
 The David and Lucile Packard Foundation
 Packard Humanities Institute
 Matsushita Electric Industrial Company, Ltd.
 Pearl Chase Society
 Juanita Peterson Survivor's Trust
 Procter & Gamble
 ProLogis
 Rainbow Optoelectronics Material Shanghai Co.
 Raytheon Company
 Reicker, Pfau, Pyle, & McRoy, LLP
 Resources Legacy Fund
 Rhodia, Inc.
 RightScale, Inc.
 Rincon Engineering Corporation
 Rockwell Collins, Inc.
 Rohm Company, Ltd.
 The Shelley and Donald Rubin Foundation
 Russell Sage Foundation
 SAGE Publications, Inc.
 Saint-Gobain Ceramics & Plastics, Inc.
 Saint-Gobain Recherche
 Samsung Electronics Co., Ltd.
 Santa Barbara Asset Management
 Santa Barbara Cottage Hospital
 Santa Barbara Foundation
 Semiconductor Research Corporation
 The Philip and Aida Siff Educational Foundation
 Alfred P. Sloan Foundation
 Small Change Foundation
 Sony Pictures Entertainment, Inc.
 Symantec Corporation
 The TABASGO Foundation
 Taipei Economic and Cultural Office
 The Tatman Foundation
 TELACU Education Foundation
 Texas Instruments
 Tinker Foundation Incorporated
 J.E. & Lillian Byrne Tipton Foundation
 Toyota Motor Sales U.S.A., Inc.
 Translucent Incorporated
 Tupperware Brands Corporation
 UCSB Alumni Association

Unilever Research
 United Technologies
 University of Aberdeen
 Veeco Instruments, Inc.
 Wells Fargo Foundation
 Weyerhaeuser Company
 The Wharton Foundation, Inc.
 William Wyles Library Board
 Wood-Claeysens Foundation
 WTF Fund
 Xerox Corporation USA
 Xerox Foundation
 Yardi Systems, Inc.
 Yoga Research and Education Foundation
 Zurich North America

Matching Gifts

UC Santa Barbara gratefully acknowledges the following corporations and foundations that generously matched gifts from alumni, parents, and friends.

Abbott Laboratories
 Accenture Foundation, Inc.
 Adobe Systems
 Advanced Micro Devices, Inc.
 Aetna Foundation, Inc.
 Agilent Technologies
 Alliant Techsystems
 American International Companies
 The Amgen Foundation
 Applera Corporation
 Arete Associates
 AT&T Foundation
 Babson Capital Management LLC
 Ball Corporation
 Bank of America Matching Gifts Program
 Bank of the West
 Barclays Global Investors
 Baxter International, Inc.
 Bingham, Osborn & Scarborough LLC
 Biogen Idec, Inc.
 BlackRock Matching Gift Program
 Boeing Company
 Bracco Research U.S.A., Inc.
 Capital Group Companies, Inc.
 Capital One Services, Inc.
 The Charles Schwab Corporation Foundation
 Chevron Matching Gift Program
 Chubb & Son, Inc.
 Citi Foundation Matching Gift Program
 Citrix
 Clorox Company Foundation
 Costco Wholesale
 Countrywide Cares
 Crail-Johnson Foundation
 Daiichi Sankyo, Inc.
 Deloitte Foundation
 Deutsche Bank Americas Foundation
 DirecTV
 Dolby Laboratories, Inc.
 Eaton Charitable Fund
 Edison International
 Ernst & Young Foundation
 Exxon Mobil Foundation
 Fannie Mae Foundation
 FLIR Systems
 Gap Foundation Gift Match Program
 GE Foundation
 Genentech Foundation
 The J. Paul Getty Trust
 GlaxoSmithKline
 Global Impact
 Google Matching Gifts Program
 Great West Casualty Company
 Hess Corporation Matching Gifts Program

IBM Matching Grants Program
 Intel Foundation
 Intuit
 John Deere Foundation
 Johnson & Johnson
 Kaiser Permanente Community Giving Campaign
 Key Foundation
 KPMG Peat Marwick Foundation
 Labcorp Corporate Community Affairs
 Lam Research Foundation
 Lockheed Martin Matching Gift Program
 The John D. and Catherine T. MacArthur Foundation
 Marathon Oil Company
 Mattel Foundation
 McAfee Matching Gift Program
 McKesson Foundation, Inc.
 Medtronic Foundation
 Merck Company Foundation, Inc.
 Merrill Lynch & Co. Foundation, Inc.
 Microsoft Matching Gift Program
 Minerals Technologies Incorporated
 Minnesota Mining & Manufacturing Corporation
 Monsanto Company
 Murphy Oil Corporation
 National Semiconductor Corporation
 NIKE Employee Matching Gift Program
 Northern Trust Company
 Northrop Grumman Foundation
 Northwestern Mutual Life
 Nuveen Investments, Inc.
 Oppenheimer Funds
 Oracle Corporation
 Pacific Gas & Electric Company
 Pacific Life
 Parker-Hannifin Foundation
 Peabody Energy Matching Gifts Program
 Pfizer, Inc.
 Pioneer Community Investment
 Plains Exploration & Production Company
 Portland General Electric Company
 PricewaterhouseCoopers LLP
 Progress Energy Service Company, LLC
 QUALCOMM, Inc.
 Raytheon Company
 RealNetworks Foundation
 RollGiving
 RSUI
 Ryan Companies US, Inc.
 San Antonio Area Foundation
 Schering-Plough Foundation
 Science Application International Corporation
 Scripps Howard Foundation
 Sempra Energy
 Shell Oil Company Foundation
 State Farm Companies Foundation
 Levi Strauss Foundation
 Summit Group, Ltd.
 Sun Microsystems Foundation, Inc.
 Sunstone Hotel Investors, Inc.
 Texas Instruments Foundation
 Toyota Motor Sales USA Foundation, Inc.
 Tri Quint
 Turner Construction Company
 U.S. Bancorp
 Union Bank of California
 United Technologies
 UPS Foundation
 Varian Associates, Inc.
 Verizon Foundation
 VISA GivingStation
 Wachovia Foundation, Inc.
 Walt Disney Company Foundation
 Washington Mutual Foundation
 Wells Fargo Matching Gift Center
 Xerox Foundation
 Xilinx

UC Santa Barbara Foundation

Officers and Trustees July 1, 2008 – June 30, 2009

OFFICERS

Chair

Fredric E. Steck '67

Vice Chair, Development

Daniel P. Burnham

Vice Chair, Investments, and Treasurer

Bruce G. Wilcox '77

Vice Chair, Donor Relations

Mark J. Schwartz '84

Secretary

Susan Worster '70

Immediate Past Chair and Nominations Chair

Stephen E. Cooper '68

Executive Director

Gary A. Greinke*

Chief Financial Officer

Eric J. Sonquist*

TRUSTEES

David G. Adishian '89
Janet A. Alpert '68
Sarah Argyropoulos
Richard A. Auhll
Jeffrey C. Barbakow
Barry A. Berkus '55
Mark A. Bertelsen '66
Edward E. Birch
Bjorn Birnir*
Richard A. Bocci
Gwendolyn A. Brown
Marcia L. Carsey H '04
Shing Chang '75
Ann Cady Cooper '62
Craig R. Cummings '72
Deanna C. Dehlsen
William A. Dinsmore III '68
Diandra de Morrell Douglas '82
Robert W. Duggan '66
Gary E. Erickson '63
Scott Frank '82
William Garlock '71
Marilyn Gevirtz H '96
Steven P. Ginder '71
Frederick W. Gluck
Amber M. Gonzalez*
Patrick L. Graham
Norman N. Habermann
Eva Haller
Norris Haring
Thomas J. Harriman
W. Roger Haughton '70
Judith Hopkinson
Blair Hull '65

Janice Jagelski '87
William K. Jones '77
Peter C. Jordano H '03
Robert Jupille '89*
Fred Kavli H '05
Kenneth Khachigian, Esq. '66
Marvel B. Kirby '51
R. Marilyn Lee '69
Barbara Levi*
Carl Lindros
Mark D. Linehan '85
Lillian Lovelace
Gene Lucas '73*
John Marren '85
Darryl McCall '78
Sara Miller McCune H '05
Sheila Bourke McGinity
Kathryn D. McKee '59
Duncan A. Mellichamp
Steven C. Mendell '63
Joel Michaelsen '69*
Ronald Mittelstaedt '85
Jane Mulfinger*
Richard D. Nanula '82
Kathy Odell
Alex Pananides H '06
Joseph H. Pollock
John Paul Primeau*
Ceil Pulitzer
Lynn P. Reitnouer '55
Lady Leslie Ridley-Tree
Ronald A. Rubenstein '66*
Richard K.N. Ryu
Harvey B. Schechter '47

Jean K. Schuyler
Kenneth P. Slaughter '79
Norman F. Sprague III, M.D. '69
Judith Stapelmann '63
Susan Tai '74
Robert M. Talley H '99
James S. Taylor
William S. Thomas Jr.
George Thurlow '73*
Michael Towbes
James J. Villanueva
Kent Vining '70
James R. Warren '76
Philip H. White '84
John M. Wiemann*
Gary Wilcox '69
John J. Wilczak
Jane Williams
Richard A. Williams '59
Patrick Yam
Chancellor Henry T. Yang H '01*

* Denotes University Trustee

The Campaign for UC Santa Barbara

Michael Douglas '68
Honorary Chair

CAMPAIGN STEERING COMMITTEE

William R. Rauth '66
Newport Beach, *Co-Chair*
Lynn P. Reitnouer '55
Los Angeles, *Co-Chair*
Mark Bertelsen '66, Palo Alto
Marcy Carsey H '04, Studio City
Steve Cooper '68, Pleasanton
Fred Gluck, Santa Barbara
Jeff Henley '66, Redwood City
Blair Hull '65, Chicago, IL
Fred Kavli H '05, Santa Barbara
Steve Mendell '63, San Diego

CAMPAIGN NATIONAL COMMITTEE

Richard A. Auhll
Santa Barbara/Aspen, CO
Co-Chair
Roger Haughton '69,
San Francisco, *Co-Chair*
Jan Alpert '68, Holland, MI/Hilton
Head Island, SC
Isaac Barpal, Ph.D. '70, Tampa, FL
Tom Bruggere '68, Portland, OR
Jim Haden '69, Washington DC
Blair Hull '65, Chicago, IL
Giandomenico Picco '72,
New York, NY
Phillip L. Spector '72,
Washington DC
Bruce G. Wilcox '77,
New York, NY
Joseph Wilson '72,
Washington DC

NORTHERN CALIFORNIA CAMPAIGN CHAIRS

Steve Cooper '68, Pleasanton,
Co-Chair
Susan Worster '70, Los Altos Hills,
Co-Chair

SOUTHERN CALIFORNIA CAMPAIGN CHAIRS

Lynn P. '55 & Winslow C. (Winnie)
'54 Reitnouer, Los Angeles,
Co-Chairs
Bill Thormahlen '77,
Orange County, *Chair*
Steve Mendell '63, San Diego,
Co-Chair
Phil White '84, San Diego,
Co-Chair



WWW.UCSB.EDU



Every effort has been made to provide a complete and accurate listing of donors and gifts of \$1,000 or more received between July 1, 2008 and June 30, 2009. Please accept our apology if a mistake or an omission has occurred.

For more information contact:

Melissa Dase
Director of Donor Relations and Stewardship
Office of Development
University of California, Santa Barbara
Santa Barbara, CA 93106-2013
(805) 893-2600
visit: www.ia.ucsb.edu/campaign

Produced by the Office of Public Affairs

Editor: Eileen Conrad
Art Director: Adine Maron

Photography: Kevin Barron p. 8.; Nell Campbell p. 15, 16, 18, 20, 22; Brenda Hartshorn p. 4 (bottom right); courtesy IBM p. 4 (bottom left); Kimberly Kavish p. 1, 6; Randy Lamb inside front and back cover; Tony Mastres cover, p. 3, 6, 9, 14, 17, 19, 21, 23; Matthew C. Miller p. 7; Christian Van De Walle p. 4 (top left)